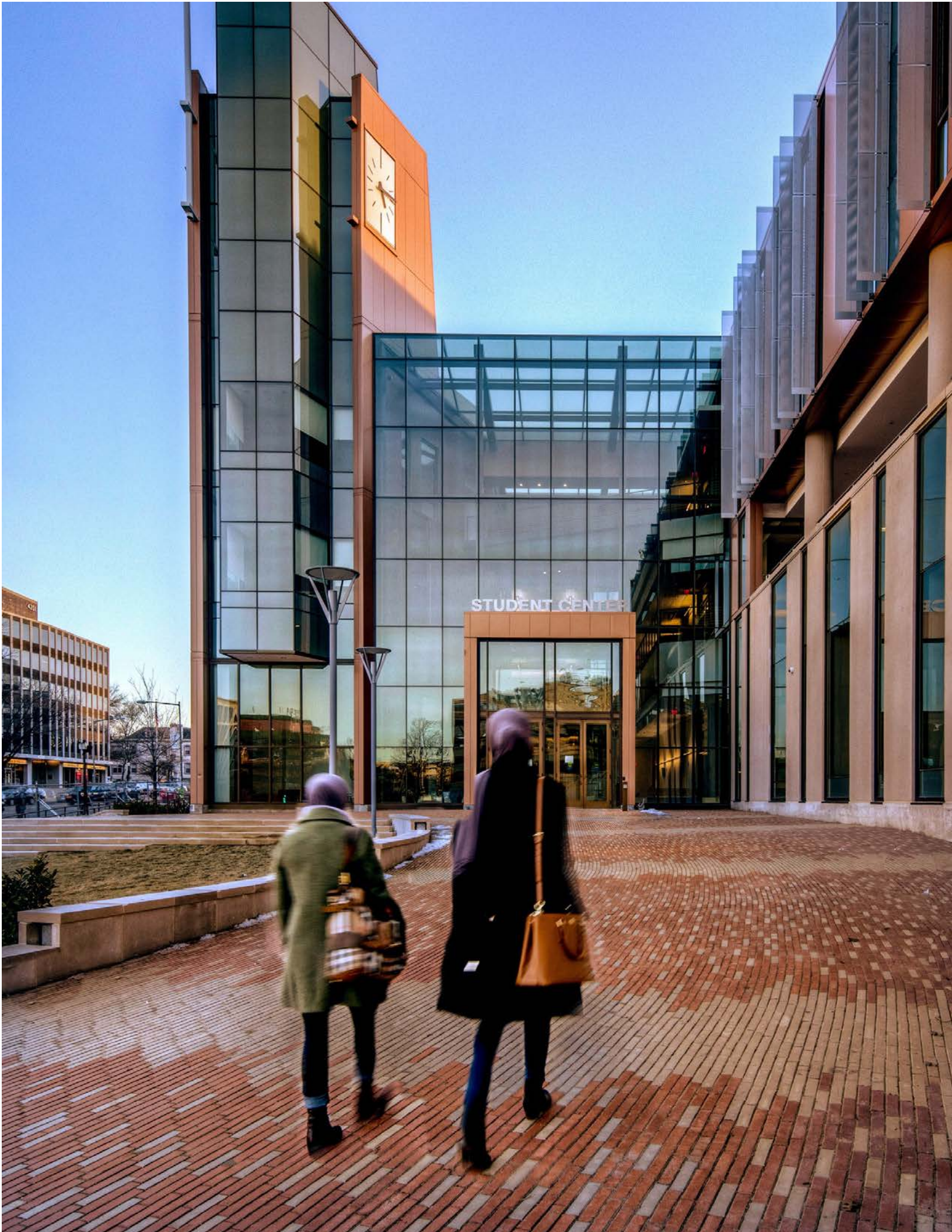




UNIVERSITY^{OF THE}
DISTRICT OF
COLUMBIA
— 1851

Factbook

ACADEMIC YEAR 2018-2019



Office of Institutional Research, Assessment and Planning

Website: <http://www.udc.edu/irap>

Email: ir-info@udc.edu

Maria Byrd

Executive Director

Office of Planning and Institutional Effectiveness

Rajeev K. Bansal

Director

Office of Institutional Research, Assessment and Planning

Gashaw Mekonnen

Senior Operations Research Analyst

Olivia Zhang

Research Assessment Analyst

Luis Borbonet

Data Analyst

Contents

Mission and Vision.....	5
Section 1: University Background.....	6
1.1 Board Members for AY 2018-2019	7
1.2 Organizational Chart	8
1.3 Academic College & School Deans	9
1.4 Active Programs Offered by Colleges & Schools.....	10
1.5 Accreditation Agencies	14
1.6 Active Workforce Certifications	17
1.7 Number of Degree Programs Offered by Level	19
Section 2: Applications & Admissions.....	20
2.1 Applications, Admissions and Enrollment	21
2.2 First Time in College (FTIC) Student Enrollment	22
2.3 FTIC from DC Feeder Schools.....	23
2.4 Transfer Student Enrollment	25
2.5 Transfer Student Prior Institution.....	26
Section 3: Student Enrollment Profile	27
3.1 Enrollment Summary.....	28
3.2 Enrollment by Classification	30
3.4 Enrollment by Ethnicity	31
3.5 Enrollment by Age	32
3.6 Enrollment by Degree Level	33
3.7 Enrollment by College/School	34
3.8 Enrollment by Department/Division	36
3.9 Enrollment by Degree Program.....	37
3.10 Enrollment by D.C. Ward.....	41
3.11 International Student Enrollment	42
3.12 DC-UP Student Information.....	43
3.13 University Athletes by Sports.....	45
3.14 Spring Enrollment	46
Section 4: Landgrant Programs in College of Agriculture, Urban Sustainability and Environmental Sciences	51
4.1 Landgrant Activities by Landgrant Center	52

Section 5: Workforce Development and Lifelong Learning	54
5.1 Enrollment and Completion by Demographic Characteristics	55
5.2 Enrollment and Completion by Course	57
5.2 WDLL Certifications.....	59
Section 6: Student Outcomes: Retention, Graduation & Completion Rates	60
6.1 First Time in College Student Retention Rates	61
6.2 Graduation Rates and Outcome Measures	62
6.2.1 Full-time First-time in College Graduation Rates.....	62
6.2.2 Outcome Measures: Four-year, Six-year and Eight-year Rates.....	63
6.3 Degree Completions/Awards	64
Section 7: Faculty and Staff Profile	68
7.1 Employee Summary	69
7.2 Average Salary for Continuing Full-Time Faculty	70
Section 8: University Finances.....	71
8.1 Sponsored Grants	72
8.2 Title III	73
8.3 Financial Aid	74

Mission and Vision

Mission

Embracing its essence as a public historically black urban-focused land- grant university in the nation's capital, UDC is dedicated to serving the needs of the community of the District of Columbia, and producing lifelong learners who are transformative leaders in the workforce, government, nonprofit sectors and beyond.

Vision

All students will achieve their highest levels of human potential.



SECTION 1

University Background

1.1 Board Members for AY 2018-2019

Christopher D. Bell, J.D., Chair

Reginald M. Felton, M.S., Vice Chair

Esther L. Barazzone, Ph.D., Secretary

The Honorable Charlene Drew Jarvis, Ph.D., Treasurer

Elaine A. Crider, D.H.Sc.

James W. Dyke, Jr., J.D.

Ken Grossinger, M.S.W.

The Honorable Gwendolyn H. Lewis, M.P.A.*

Ronald Mason, Jr., J.D., ex-officio

Joella Roberts **

Carolyn B. Rudd, Ed.D.

Major General Errol R. Schwartz, U.S. Army (Ret.), M.A., M.S.

Barrington D. Scott, B.S.*

Jerome Shelton, M.A.*

Anthony C. Tardd, Ph.D.

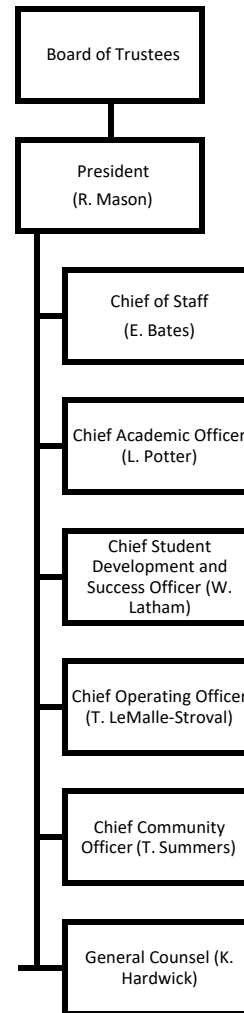
Joshua S. Wyner, J.D.

*Elected Alumni Trustee

**Elected Student Trustee

1.2 Organizational Chart

University of the District of Columbia President's Executive Cabinet



1.3 Academic College & School Deans

College of Agriculture, Urban Sustainability and Environmental Sciences (CAUSES)

Dr. Sabine O'Hara

College of Arts & Sciences (CAS)

Dr. April Massey

School of Business & Public Administration (SBPA)

Dr. Mohamad Sepehri

School of Engineering & Applied Sciences (SEAS)

Dr. Devdas Shetty

David A. Clarke School of Law (DCSL)

Katherine S. Broderick

Community College (CC)

Dr. Tony Summers

1.4 Active Programs Offered by Colleges & Schools

College of Agriculture, Urban Sustainability and Environmental Sciences

- Academic Program Division
 - Department of Architecture and Urban Sustainability
 - Architecture and Community Planning (BS)
 - Urban Sustainability (BA)
 - Architecture and Community Planning (M'Arch)
 - Professional Science Masters
 - Urban Agriculture (PSM)
 - Urban Sustainability (PSM)
 - Water Resources Management (PSM)
 - Department of Health, Nursing and Nutrition
 - Health Education (BS)
 - Nursing (BS)
 - Nutrition and Dietetics (BS)
 - Nutrition and Dietetics (MS)
- Landgrant Program Division
 - Center for Urban Agriculture
 - Master Gardening Certificate
 - Urban Agriculture Certificate
 - Hydroponic and Aquaponics Technician Certificate
 - Hoop House Construction Certificate
 - Center for Sustainable Development
 - Entrepreneurship Certificate
 - Green Infrastructure Certificate
 - Green Building Maintenance Certificate
 - Center for Architectural Innovation and Building Science
 - Lead Abatement Certificate
 - Safe Pesticide Applicator Certificate
 - Architectural Research Institute
 - Single Family Program
 - PADD Program
 - Center for Nutrition, Diet and Health
 - Supplemental Nutrition Education Assistance Program (SNAP-Ed)
 - Extended Food and Nutrition Education Program (EFNEP)
 - Food Safety Certificate
 - Food Management Certificate
 - Center for 4H and Youth Development
 - 4H Club – STEM Education
 - 4H Military Kids
 - 4H Life
 - Lifesmart
 - Volunteer Leadership Certificate
 - Water Resources Research Institute & Environmental Quality Testing Laboratory

- Water Testing Service
- Soil Testing Services
- Institute of Gerontology
 - Respite Aid/ Bodywise Program
 - Senior Companion Program
 - Senior Tuition Program

College of Arts and Sciences

- Division of Arts and Humanities
 - Art (BA)
 - Digital Media (BA)
 - English (BA)
 - Music (BM)
- Division of Education, Health and Social Work
 - Early Childhood Education (BA)
 - Elementary Education (BA)
 - Special Education (BA)
 - Social Work (BSW)
 - Speech–Language Pathology (MS)
 - Counseling: School and Mental Health concentrations (MS)
 - Rehabilitation Counseling (MA)
 - Early Childhood (MA)
 - Teaching (MAT)
 - Adult Education (MA)
 - Adult Education Graduate Certificate
- Division of Sciences and Mathematics
 - Biology (BS)
 - Chemistry (BS)
 - Mathematics (BS)
 - Biology (MS)
- Division of Social and Behavioral Sciences
 - Administration of Justice (BA)
 - Human Development (BA)
 - Political Science (BA)
 - Psychology (BS)
 - Homeland Security (MS)

School of Business and Public Administration

- Accounting Department
 - Accounting (BBA)
- Business Management Department
 - Business Management (BBA)
 - Concentration in Finance
 - Concentration in Marketing
 - Concentration in Management Information Systems
 - Certificates – Entrepreneurship
 - Certificates – Nonprofit Leadership
 - Certificates – Procurement and Public Contracting
- Graduate Programs
 - Master of Business Administration (MBA)
 - Master of Public Administration (MPA)
 - Graduate Certificate – Nonprofit Management and Leadership

School of Engineering and Applied Sciences

- Department of Civil Engineering
 - Civil Engineering (BSCE)
 - Civil Engineering (MSCE)
- Department of Computer Science and Information Technology
 - Computer Science (BSCS)
 - Computer Science (MSCS)
 - Information Technology (BSIT)
- Department of Electrical and Computer Engineering
 - Electrical Engineering (BSEE)
 - Electrical Engineering (With Computer Engineering Option, BSEE)
 - Electrical Engineering (MSEE)
- Department of Mechanical Engineering
 - Biomedical Engineering (BSBME)
 - Mechanical Engineering (BSME)
 - Mechanical Engineering (MSME)
- Ph.D in Computer Science and Engineering

David A. Clarke School of Law

- J.D. Program (Full Time)
- J.D. Program (Part Time)
- LL.M. Program

Community College

- Graphic Design (AA)
- Music (AA)
- Division of Education
 - Education
- Division of Humanities
 - Liberal Studies (AA)
 - Liberal Studies (AS)
- Division of Mathematics, IT and Engineering
 - Architectural Engineering Technology (AAS)
 - Construction Management (AAS)
 - Aviation Maintenance Technology (AAS)
 - Computer Science Technology (AAS)
- Division of Business
 - Business Administration (AS)
 - Business Technology (AAS)
 - Computer Accounting Technology (AAS)
 - Office Administration (AAS)
 - Fashion Merchandising (AAS)
 - Hospitality Management (AS)
- Division of Criminology
 - Corrections Administration (AAS)
 - Legal Assistant (AAS)
 - Law Enforcement (AAS)
- Division of Nursing, Allied Health, Life and Physical Sciences
 - Nursing (AAS)
 - Mortuary Science (AAS)
 - Respiratory Therapy (AAS)

1.5 Accreditation Agencies

College/School	Accrediting Agencies
<i>College of Agriculture, Urban Sustainability and Environmental Sciences:</i>	
○ Nutrition and Dietetics	Accreditation Council for Education in Nutrition & Dietetics (ACEND)
○ Architecture	National Architectural Accrediting Board (NAAB)
○ RN-BSN Nursing	Accreditation Commission for Education in Nursing (ACEN)
<i>College of Arts & Sciences:</i>	
○ Social Work	Council on Social Work Education (CSWE)
○ Speech-Language Pathology	Council on Academic Accreditation in Audiology & Speech-Language Pathology of the American Speech-Language Hearing Association (CAA)
○ Education	<p><u>Accreditation:</u> Council for the Accreditation of Educator Preparation (CAEP) for new accreditation cycle</p> <p><u>Approvals:</u> Office of the State Superintendent of Education (OSSE) (MAT – approved concentrations >> •Secondary Social Studies, •Secondary English, •Elementary, •Secondary and Middle School Science •Secondary Math •Music</p> <p>MA – approved concentration: •Early Childhood</p> <p>BA – approved concentrations: •Early Childhood Education •Elementary Education •Special Education (Non-Categorical)</p>
○ Chemistry	<p><u>Approvals:</u> Committee on Professional Training (CPT), American Chemical Society (ACS)</p>

- | | |
|--|---|
| ○ Master of Science in Counseling with a concentration in School | Council for Accreditation of Counseling and Related Educational Programs (CACREP) |
| ○ Master of Arts in Rehabilitation Counseling | Council for Accreditation of Counseling and Related Educational Programs (CACREP) |

School of Business & Public Administration:

- | | |
|-------------------------------------|---|
| ○ Accounting | Association of Collegiate Business Schools and Programs (ACBSP) |
| ○ Business Management | Association of Collegiate Business Schools and Programs (ACBSP) |
| ○ Marketing | Association of Collegiate Business Schools and Programs (ACBSP) |
| ○ Management Information Systems | Association of Collegiate Business Schools and Programs (ACBSP) |
| ○ Master of Business Administration | Association of Collegiate Business Schools and Programs (ACBSP) |

School of Engineering and Applied Sciences:

- | | |
|--------------------------|---|
| ○ Civil Engineering | Accreditation Board for Engineering and Technology, Inc. (ABET), Engineering Accreditation Commission (EAC) |
| ○ Electrical Engineering | Accreditation Board for Engineering and Technology, Inc. (ABET), Engineering Accreditation Commission (EAC) |
| ○ Mechanical Engineering | Accreditation Board for Engineering and Technology, Inc. (ABET), Engineering Accreditation Commission (EAC) |
| ○ Computer Science | Accreditation Board for Engineering and Technology (ABET), Computing Accreditation Commission (CAC) |

David A. Clarke School of Law

American Bar Association

Community College:

- | | |
|------------------------|--|
| ○ Aviation Maintenance | Federal Aviation Administration |
| ○ Mortuary Science | American Board of Funeral Service Education |
| ○ Nursing | Accreditation Commission for Education (ACEN) |
| ○ Respiratory Therapy | Commission on Accreditation for Respiratory Care (CoARC) |
-

1.6 Active Workforce Certifications

Certification/Credential	WDLL Pathway
AHLEI Certified Front Desk Representative	Hospitality and Tourism Pathway
AHLEI Guest Service Gold (CGSP)	Hospitality and Tourism Pathway
AHLEI Guest Room Attendant	Hospitality and Tourism Pathway
AHLEI Hotel Property Maintenance	Hospitality and Tourism Pathway
AHLEI Restaurant Server	Hospitality and Tourism Pathway
NALP Leasing for Property Management	Hospitality and Tourism Pathway
NRF - Customer Service and Sales Certified Specialist	Hospitality and Tourism Pathway
ServSafe Alcohol	Hospitality and Tourism Pathway
ServSafe Food Handler	Hospitality and Tourism Pathway
ServSafe Manager	Hospitality and Tourism Pathway
CompTIA - A+	Information Technology and Office Administration
CompTIA - Network+	Information Technology and Office Administration
CompTIA - Security+	Information Technology and Office Administration
PMI - Certified Associate for Project Management (CAPM)	Information Technology and Office Administration
NCCER Construction Core	Construction, Infrastructure Systems, Logistics, and Operations
ESCO H.E.A.T. HVAC Theory	Construction, Infrastructure Systems, Logistics, and Operations
ESCO H.E.A.T. Excellence HVAC Installation	Construction, Infrastructure Systems, Logistics, and Operations
NAA - Certified Apartment Maintenance Technician (CAMT)	Construction, Infrastructure Systems, Logistics, and Operations
EPA Refrigeration Technician Program (HVAC/EPA Section 608 Universal)	Construction, Infrastructure Systems, Logistics, and Operations
Motor Vehicle Air Conditioner Technician (EPA 609 MVAC)	Construction, Infrastructure Systems, Logistics, and Operations
AAPC - Certified Professional Coder (CPC)	Healthcare - Direct Care and Healthcare Administration
AAPC - Certified Professional Biller (CPB)	Healthcare - Direct Care and Healthcare Administration
BONENT – Certified Dialysis Technician	Healthcare - Direct Care and Healthcare Administration
NHA - Certified Billing and Coding Specialist (CBCS)	Healthcare - Direct Care and Healthcare Administration
NHA - Certified Clinical Medical Assistant (CCMA)	Healthcare - Direct Care and Healthcare Administration

Certification/Credential	WDLL Pathway
NHA - Certified EKG Technician (CET)	Healthcare - Direct Care and Healthcare Administration
NHA - Certified Medical Administrative Assistant (CMAA)	Healthcare - Direct Care and Healthcare Administration
NHA - Certified Patient Care Technician (CPCT)	Healthcare - Direct Care and Healthcare Administration
NHA - Certified Pharmacy Technician (CPhT)	Healthcare - Direct Care and Healthcare Administration
NHA - Certified Phlebotomy Technician (CPT)	Healthcare - Direct Care and Healthcare Administration
NHA - Electronic Health Records Specialist (CEHRS)	Healthcare - Direct Care and Healthcare Administration
PearsonVue - Certified Nurse Assistant (CNA)	Healthcare - Direct Care and Healthcare Administration
Council for Professional Recognition– Child Development Associate (CDA)	Early Childhood Education

1.7 Number of Degree Programs Offered by Level

Program Level	No. of Active Programs
Associate	21
Baccalaureate	29
Undergraduate Certificate	6
Graduate Certificate	5
Graduate (including JD, LLM & PhDs)	25
<i>Total</i>	87



SECTION 2

Applications & Admissions

2.1 Applications, Admissions and Enrollment

Chart 1: Admissions Yield Rate*

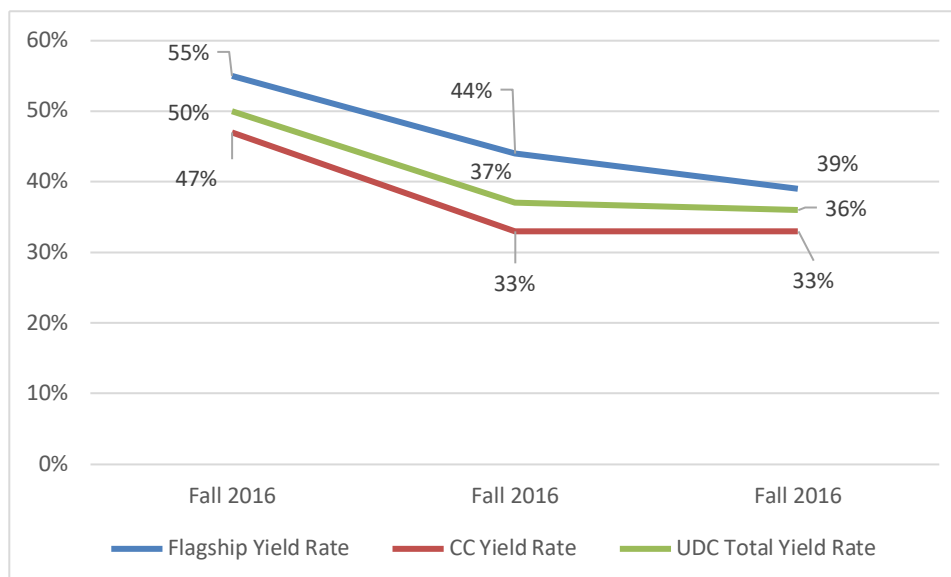


Table 1: Admissions Summary (Flagship and CC)

Campus		Fall 2016	Fall 2017	Fall 2018	Percent Change	
					2016-17	2017-18
Flagship	Applicants	2,477	2,141	2,315	-14%	8%
	Admitted	1,128	1,143	1,462	1%	28%
	Enrolled	621	506	574	-19%	13%
	Yield Rate	55%	44%	39%	-11%	-1%
Community College	Applicants	2,045	2,539	2,544	24%	0%
	Admitted	1,605	2,125	2,226	32%	5%
	Enrolled	751	700	737	-7%	5%
	Yield Rate	47%	33%	33%	-14%	0%
UDC Total	Applicants	4,522	4,680	4,859	3%	4%
	Admitted	2,733	3,268	3,688	20%	13%
	Enrolled	1,372	1,206	1,311	-12%	9%
	Yield Rate	50%	37%	36%	-13%	-1%

- Yield rate = # of students enrolled / # of applicants admitted. All levels of programs are included except Law school.

2.2 First Time in College (FTIC) Student Enrollment

Table 2: FTIC Enrollment Summary

	Fall2016			Fall2017			Fall2018		
Characteristics	Flagship	CC	Total	Flagship	CC	Total	Flagship	UDC-CC	Total
FT/PT									
Full Time	135	105	240	163	134	297	223	141	364
Part Time	8	234	242	8	221	229	18	235	253
Total	143	339	482	171	355	526	241	376	617
Race/Ethnicity:									
American Indian		2	2	1	0	1	0	2	2
Asian	2	4	6	3	3	6	4	10	14
Black	78	227	305	94	243	337	141	276	417
Hispanic	19	44	63	39	42	81	47	49	96
White	12	4	16	6	9	15	10	7	17
Other/Not Stated	32	58	90	28	58	86	39	32	71
Total	143	339	482	171	355	526	241	376	617
Gender									
Female	64	185	249	82	209	291	115	218	333
Male	75	147	222	86	132	218	125	152	277
Not Stated	4	7	11	3	14	17	1	6	7
Total	143	339	482	171	355	526	241	376	617
Residency									
Resident	74	267	341	108	271	379	147	277	424
Metro-Area Resident	12	26	38	19	19	38	19	15	34
Non-Resident	57	46	103	44	65	109	75	84	159
Total	143	339	482	171	355	526	241	376	617
Age Group									
< 18	23	15	38	23	28	51	30	34	64
18-19	86	150	236	125	166	291	169	166	335
20-21	23	49	72	17	57	74	28	52	80
22-24	4	32	36	4	23	27	10	32	42
25-29	4	33	37	1	39	40	2	43	45
30-34	1	23	24	1	11	12	0	17	17
35+	1	37	39	0	31	31	2	31	33
Missing	0	0	0	0	0	0	0	1	1
Total	143	339	482	171	355	526	241	376	617

2.3 FTIC from DC Feeder Schools

FIGURE 1 : PERCENTAGE DISTRIBUTION OF FTIC ENROLLMENT BY SCHOOL TYPE: FALL 2017

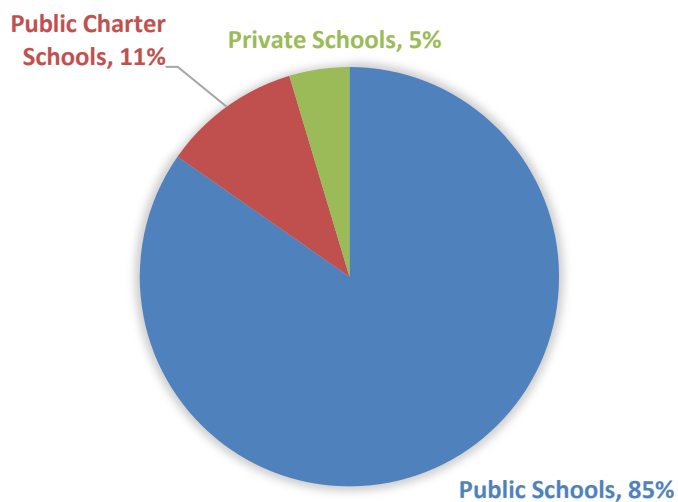


Table 3: FTIC from DC Feeder Schools: Fall 2018

DC High Schools	Community College	Flagship	Total
Public Schools			
Anacostia High School	11	13	24
Ballou Stay High School	7	7	14
Benjamin Banneker Academic High School	2	4	6
Calvin Coolidge High School	4	8	12
Duke Ellington School Of Arts	3	11	14
Eastern Senior High School	15	24	39
Francis L Cardozo High School	16	30	46
Frank W Ballou High School	9	14	23
Howard D Woodson Senior High School	7	8	15
Luke C Moore Academy School	6	6	12
Mckinley Technology High School	5	14	19
Paul Laurence Dunbar High School	13	19	32
Phelps Career Senior High School	5	7	12
Roosevelt Evening High School	8	13	21
Roosevelt High School	10	14	24
School Without Walls	1	2	3

DC High Schools	Community College	Flagship	Total
Spingarn Senior High School	1	1	2
Thurgood Marshall Academy	3	6	9
Washington Metropolitan High School	3	3	6
Woodrow Wilson Senior High School	34	54	88
<i>Sub-total</i>	<i>163</i>	<i>258</i>	<i>421</i>
Public Charter Schools			
Booker T Washington Public Charter School	1	1	2
Capital City Public Charter School	5	9	14
Cesar Chavez Capitol Hill Public Charter School	4	7	11
Cesar Chavez Public Charter-Parkside	2	5	7
Hospitality High School	3	3	6
Idea Public Charter School	1	2	3
National Collegiate Preparatory Public Charter School	2	2	4
Richard Wright Public Charter School	2	4	6
<i>Sub-total</i>	<i>20</i>	<i>33</i>	<i>53</i>
Private Schools			
Archbishop Carroll High School	6	10	16
Gonzaga College High School	1	1	2
Kingsbury Day School	1	2	3
Parkmont School	1	1	2
<i>Sub-total</i>	<i>9</i>	<i>14</i>	<i>23</i>
<i>Total</i>	<i>192</i>	<i>305</i>	<i>497</i>

2.4 Transfer Student Enrollment

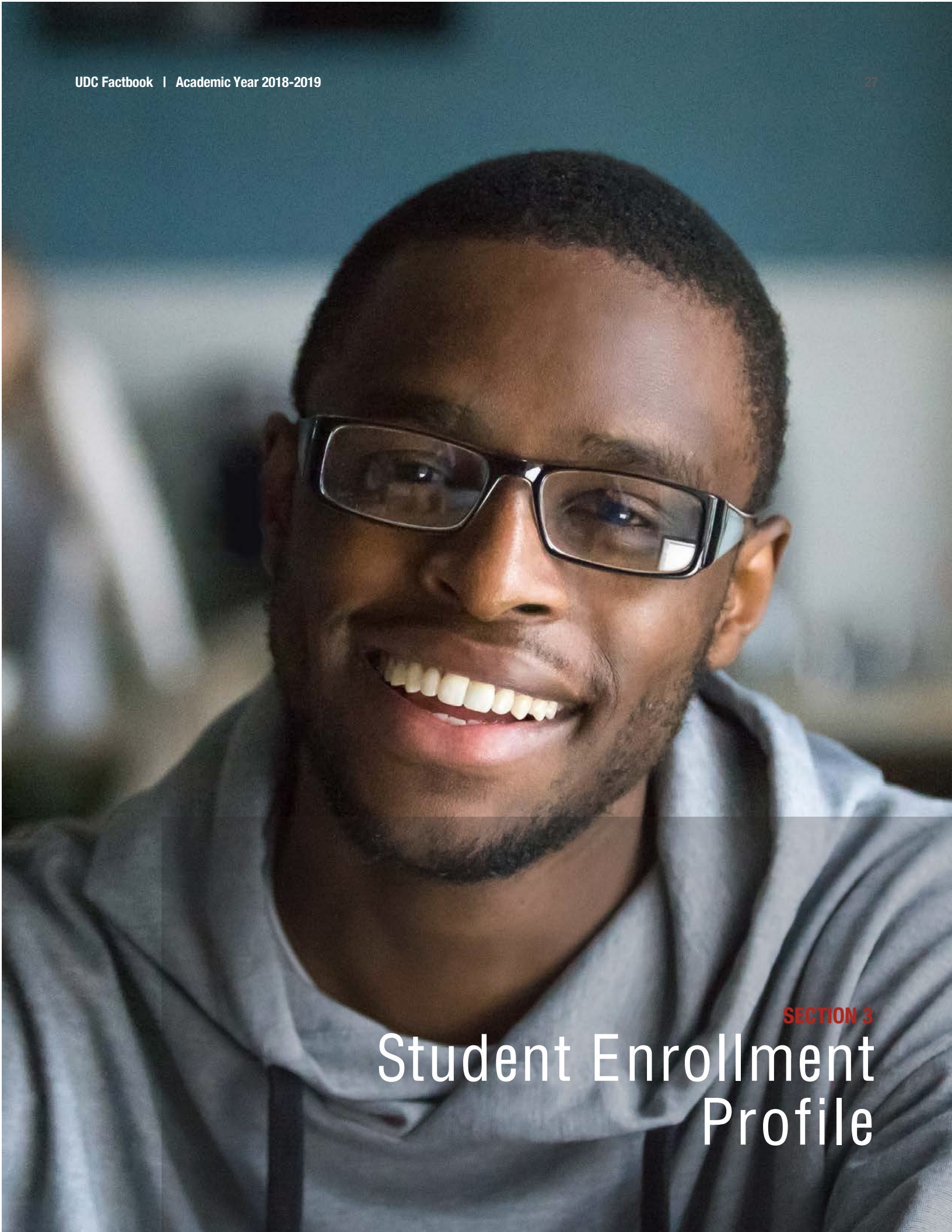
Table 4: Transfer Enrollment Summary

Characteristics	Fall 2016			Fall 2017			Fall 2018		
	Flagship	UD C-CC	Total	Flagship	UD C-CC	Total	Flagship	UD C-CC	Total
FT/PT									
FT	116	43	159	102	56	158	104	85	189
PT	42	79	121	46	95	141	36	99	135
Total	158	122	280	148	151	299	140	184	324
Ethnicity									
Asian	5	4	9	2	2	4	5	8	13
Black	66	77	143	23	34	57	49	97	146
Hispanic	22	10	32	3	4	7	4	7	11
White	13	10	23	6	3	9	8	11	19
Unknown	52	21	73	114	108	222	74	61	135
Total	158	122	280	148	151	299	140	184	324
Gender									
Female	70	67	137	76	84	160	72	103	175
Male	82	53	135	71	67	138	66	79	145
Unknown	6	2	8	1	0	1	2	2	4
Total	158	122	280	148	151	299	140	184	324
Residency									
Resident	59	73	132	57	87	144	52	97	149
Metro Area	18	6	24	27	8	35	18	9	27
Non-Resident	81	43	124	64	56	120	70	78	148
Total	158	122	280	148	151	299	140	184	324
Age									
18-19	12	16	28	20	27	47	13	28	41
20-21	28	27	55	29	35	64	32	43	75
22-24	51	16	67	37	21	58	31	36	67
25-29	29	29	58	29	27	56	28	36	64
30-34	17	11	28	17	19	36	16	21	37
35 &+	21	23	44	16	22	38	20	20	40
Total	158	122	280	148	151	299	140	184	324

2.5 Transfer Student Prior Institution

Table 5: Transfer Student Prior Institution: Fall 2018

Prior Institution Name	Flagship	UDC-CC	Total
Montgomery College (Maryland)	12	11	23
All Previous College/Instituto	9	9	18
Prince Georges Cmty College	4	12	16
Northern Virginia Comm College	3	5	8
Advance Placement	5	2	7
Trinity Washington University	0	7	7
Virginia State University	1	6	7
Montgomery Coll Rockville	3	3	6
Morgan State University	1	5	6
Howard University	3	2	5
Northrn Virginia Cc Alexandria	2	3	5
Us Military Transcript	3	2	5
Bennett College NC	3	1	4
Brookdale Cmty College	3	1	4
Ethiopia (College)	0	4	4
Potomac State College	2	2	4
St Augustine University	2	2	4
Univ Maryland Eastern Shore	1	3	4
Univ Maryland Univ College	1	3	4



SECTION 3

Student Enrollment Profile

3.1 Enrollment Summary

Chart 2: Enrollment Trend

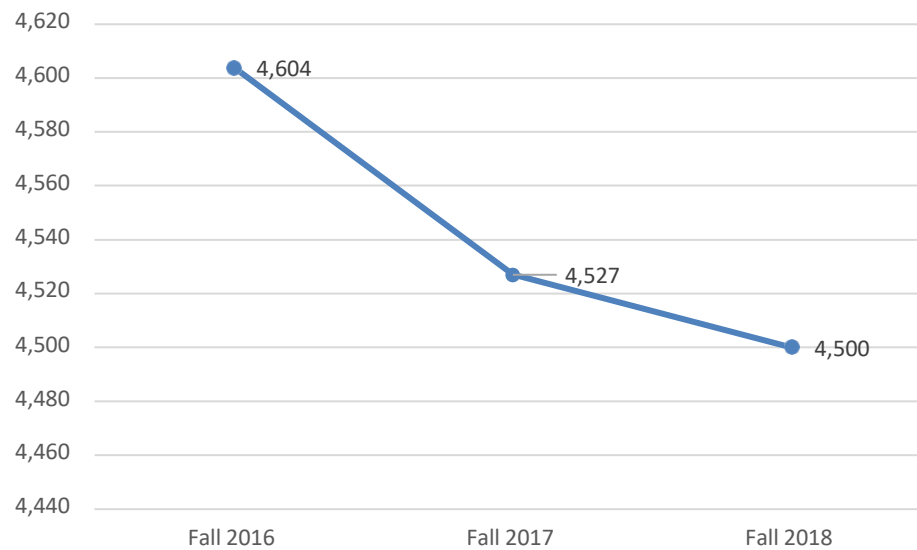


Table 6: Enrollment Summary

		Fall 2016	Fall 2017	Fall 2018	% Change 2017-2018
Headcount		4,604	4,527	4,500	-1%
FTE		3,585	3,574	3,568	0%
Credit Hours		47,374	47,388	47,236	0%
Academic Load					
Full-time	Count	2,187	2,256	2,228	-1%
	%	48%	50%	50%	
Part-time	Count	2,417	2,271	2,272	0%
	%	52%	50%	50%	
Total		4,604	4,527	4,500	-1%
Gender					
Female	Count	2,643	2,614	2,547	-3%
	%	57%	58%	57%	-2%
Male	Count	1,882	1,850	1,828	-1%
	%	41%	41%	41%	

		Fall 2016	Fall 2017	Fall 2018	% Change 2017-2018
Not Stated	Count	79	63	125	98%
	%	2%	1%	3%	
Total		4,604	4,527	4,500	-1%
Residency					
Resident	Count	2,988	2,977	3,045	2%
	%	65%	66%	68%	
Metro Area	Count	427	419	400	-5%
	%	9%	9%	9%	
Non_resident	Count	1,189	1,131	1,055	-7%
	%	26%	25%	23%	
Total		4,604	4,527	4,500	-1%

3.2 Enrollment by Classification

Figure 2: Percentage Distribution of Total Enrollment by Class Level: Fall 2018

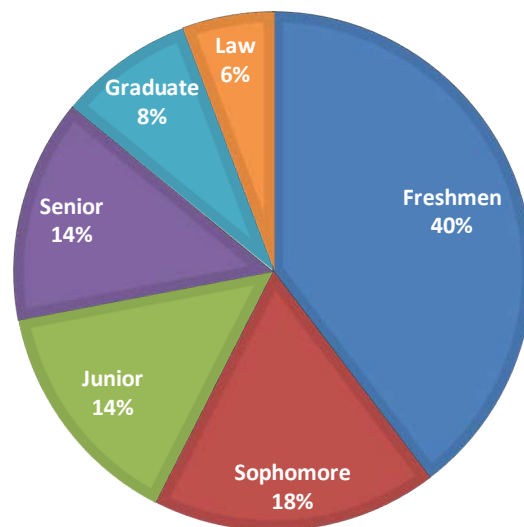


Table 7: Enrollment by Classification

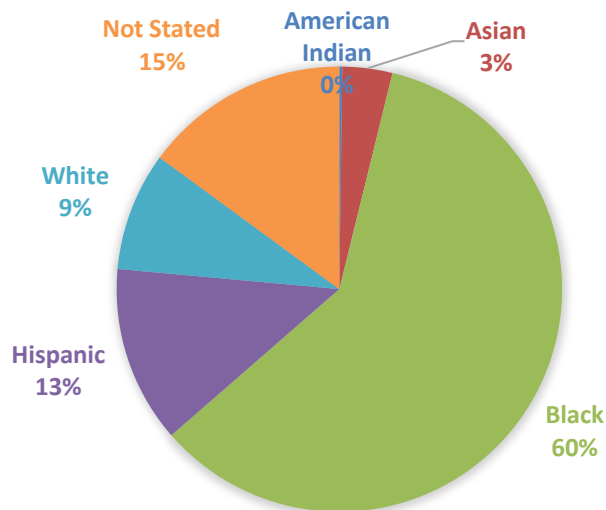
Classification	College	Fall 2016	Fall 2017	Fall 2018
Freshmen	Flagship	485	463	497
	UDC-CC	1,180	1,212	1,287
	<i>Total</i>	1,665	1,675	1,784
Sophomore	Flagship	371	395	343
	UDC-CC	498	492	461
	<i>Total</i>	869	887	804
Junior	Flagship	481	505	515
	UDC-CC	187	124	137
	<i>Total</i>	668	629	652
Senior	Flagship	714	646	602
	UDC-CC	34	22	25
	<i>Total</i>	748	668	627
Graduate		368	388	377
Law School		286	280	256
UDC - Total		4,604	4,527	4,500

3.4 Enrollment by Ethnicity

Table 8: Enrollment by Ethnicity

Ethnicity	Fall 2016				Fall 2017				Fall 2018				Percentage Change
	Flagship	CC	Law	UDC Total	Flagship	CC	Law	UDC Total	Flagship	CC	Law	UDC Total	2017-2018
American Indian	3	6	1	10	5	3	0	8	7	3	0	10	25%
Asian	114	32	17	163	116	28	23	167	96	40	27	163	-2%
Black	1,195	1,321	127	2,643	1,271	1,300	123	2,694	1,270	1,319	100	2,689	0%
Hispanic	236	215	42	493	241	235	43	519	286	252	40	578	11%
White	249	44	80	373	266	48	69	383	270	55	63	388	1%
Not Stated	622	281	19	922	498	236	22	756	405	241	26	672	-11%
Total	2,419	1,899	286	4,604	2,397	1,850	280	4,527	2,334	1,910	256	4,500	-1%

Figure 3: Percentage Distribution of Total Enrollment by Ethnicity: Fall 2018



3.5 Enrollment by Age

Table 9: Enrollment by Age

Number of Students by Age Group													
	Fall 2016				Fall 2017				Fall 2018				Percentage Change
Age Group	Flagship	CC	Law	UDC Total	Flagship	CC	Law	UDC Total	Flagship	CC	Law	UDC Total	2017-2018
< 18	24	100	0	124	25	136	0	161	31	120	0	151	-6%
18-19	138	253	0	391	229	281	0	510	289	290	0	579	14%
20-21	255	268	1	524	251	280	2	533	254	299	1	554	4%
22-24	480	318	42	840	477	275	40	792	457	282	39	778	-2%
25-29	589	347	86	1,022	538	326	83	947	490	345	78	913	-4%
30-34	284	194	72	550	270	177	82	529	247	200	61	508	-4%
35-39	167	143	41	351	174	103	29	306	171	108	35	314	3%
40-49	230	151	25	406	210	152	29	391	196	133	28	357	-9%
50-64	168	110	14	292	158	103	11	272	135	118	13	266	-2%
65 &>	84	14	4	102	64	17	4	85	63	14	1	78	-8%
Missing	0	1	1	2	1	0	0	1	1	1	0	2	100%
Total	2,419	1,899	286	4,604	2,397	1,850	280	4,527	2,334	1,910	256	4,500	-1%
Average Age	31.3	28.2	32.5	30.1	30.4	27.7	32.3	29.4	29.8	27.7	32.3	29.1	-1%

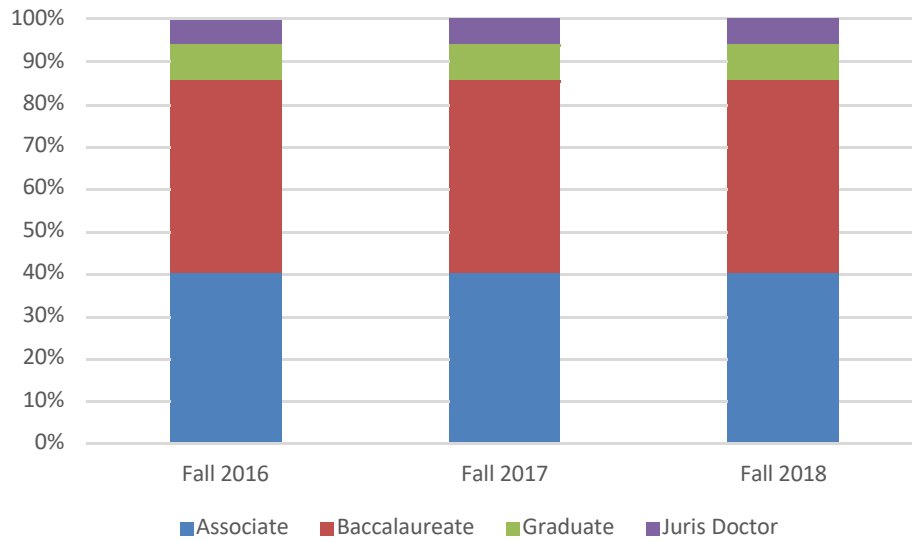
Percentage of Students by Age Group													
	Fall 2016				Fall 2017				Fall 2018				Percentage Change
Age Group	Flagship	CC	Law	UDC Total	Flagship	CC	Law	UDC Total	Flagship	CC	Law	UDC Total	2017-2018
< 18	1%	5%	0%	3%	1%	7%	0%	4%	1%	6%	0%	3%	-6%
18-19	6%	13%	0%	8%	10%	15%	0%	11%	12%	15%	0%	13%	14%
20-21	11%	14%	0%	11%	10%	15%	1%	12%	11%	16%	0%	12%	5%
22-24	20%	17%	15%	18%	20%	15%	14%	17%	20%	15%	15%	17%	-1%
25-29	24%	18%	30%	22%	22%	18%	30%	21%	21%	18%	30%	20%	-3%
30-34	12%	10%	25%	12%	11%	10%	29%	12%	11%	10%	24%	11%	-3%
35-39	7%	8%	14%	8%	7%	6%	10%	7%	7%	6%	14%	7%	3%
40-49	10%	8%	9%	9%	9%	8%	10%	9%	8%	7%	11%	8%	-8%
50-64	7%	6%	5%	6%	7%	6%	4%	6%	6%	6%	5%	6%	-2%
65 &>	3%	1%	1%	2%	3%	1%	1%	2%	3%	1%	0%	2%	-8%
Missing	0%	0%	0%	0%	0%	0%	0%	0%	0%	0%	0%	0%	0%
Total	100%	100%	100%	100%	100%	100%	100%	100%	100%	100%	100%	100%	0%

3.6 Enrollment by Degree Level

Table 10: Enrollment by Degree Level

Enrollment	Level	Fall 2016	Fall 2017	Fall 2018	Percent Change Fall 2017- 2018
Headcount	Associate	1,899	1,850	1,910	3%
	Baccalaureate	2,051	2,009	1,957	-3%
	Graduate	368	388	377	-3%
	Law	286	280	256	-9%
	Total	4,604	4,527	4,500	-1%
Full-time Equivalent (FTE)	Associate	1,283	1,273	1,357	7%
	Baccalaureate	1,736	1,712	1,666	-3%
	Graduate	319	345	322	-7%
	Law	247	244	223	-9%
	Total	3,585	3,574	3,568	0%
Credit Hours	Associate	15,911	15,849	16,963	7%
	Baccalaureate	24,559	24,331	23,530	-3%
	Graduate	3,495	3,812	3,631	-5%
	Law	3,409	3,396	3,112	-8%
	Total	47,374	47,388	47,236	0%

Chart 2: Percent Distribution of Headcount Enrollment by Degree Level



3.7 Enrollment by College/School

Figure 4: Percentage Distribution of Headcount Enrollment by College: Fall 2018

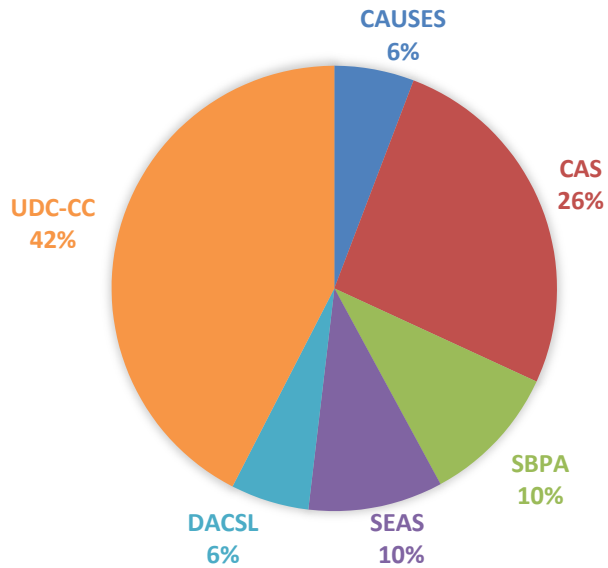


Table 11: Fall Enrollment by College

	Fall 2016	Fall 2017	Fall 2018	Percent Change Fall 2017-18
Enrollment (Headcount) Distribution by College				
Flagship				
College of Agriculture, Urban Sustainability & Environmental Sciences (CAUSES)	283	277	261	-6%
College of Arts & Sciences (CAS)	1,197	1,188	1,173	-1%
School of Business & Public Administration (SBPA)	496	477	460	-4%
School of Engineering & Applied Sciences (SEAS)	443	455	440	-3%
Flagship Subtotal	2,419	2,397	2,334	-3%
David A. Clarke School of Law	286	280	256	-9%
UDC- Community College	1,899	1,850	1,910	3%
Total	4,604	4,527	4,500	-1%
Full-Time Equivalent (FTE) Distribution by College				
Flagship				
College of Agriculture, Urban Sustainability & Environmental Sciences (CAUSES)	219	221	199	-10%
College of Arts & Sciences (CAS)	996	989	978	-1%
School of Business & Public Administration (SBPA)	431	418	400	-4%
School of Engineering & Applied Sciences (SEAS)	410	428	411	-4%
David A. Clarke School of Law	247	244	223	-9%
UDC -Community College	1,283	1,273	1,357	7%
Total	3,585	3,574	3,568	0%

Note:

UG FTE=FT + (Total Credit Hours taken by PT UG/12)

Grad FTE=FT + (Total Credit Hours taken by PT Grad/9)

LAW FTE=FT + (PT LAW*0.75)

3.8 Enrollment by Department/Division

Table 12: Enrollment by College, Department and Full/Part-time Status: Fall 2018

Department	Full-time			Part-time			Overall
	Undergrad	Grad	Total	Undergrad	Grad	Total	
College of Agriculture, Urban Sustainability& Environmental Sciences							
Environmental Sciences		12	12		9	9	21
Health Education	20		20	14		14	34
Nursing	2		2	1		1	3
Nutrition and Food Sciences	30	3	33	14	1	15	48
Urban Architecture and Comm Plan	47	20	67	15	3	18	85
Urban Sustainability	16	1	17	5	1	6	23
Non-degree and Undeclared	1		1	46		46	47
sub-total	116	36	152	95	14	109	261
College of Arts & Sciences							
Div of Educ Hlth and Social Work	90	132	222	73	45	118	340
Div of Sciences and Mathematics	127	7	134	48		48	182
Div of Social and Behavioral Sci	223	21	244	160	22	182	426
Division of Arts and Humanities	114		114	46		46	160
Non-degree and Undeclared	5	2	7	49	9	58	65
sub-total	559	162	721	376	76	452	1173
School of Business & Public Administration							
Accounting	62		62	42		42	104
Business and Management	207		207	85		85	292
Public Administration and Graduate Studies	0	50	50		13	13	63
Non-degree and Undeclared	0		0		1	1	1
sub-total	269	50	319	126	14	141	460
School of Engineering & Applied Science							
Civil Engineering	68	1	69	6	2	8	77
Computer Sci and Info Technology	149	6	155	35	8	43	198
Electrical Engineering	46	7	53	12	1	13	66
Mechancial Engineering	86		86	12		12	98
Non-degree and Undeclared	0			1		1	1
sub-total	349	14	363	66	11	77	440
UDC -Community College							
Acct, Finance and Economics	14		14	24		24	38
Computer Sci and Info Technology	41		41	115		115	156
Education	33		33	160		160	193
English	232		232	441		441	673
Engr, Archit, and Aerospace Tech	21		21	51		51	72
Mass Media Visual and Perf Arts	38		38	55		55	93

Department	Full-time			Part-time			Overall
	Undergrad	Grad	Total	Undergrad	Grad	Total	
Mgmt, Hospitality Studies	76		76	110		110	186
Mrktng, Lgl Studies and Info Sys	15		15	35		35	50
Nursing and Allied Health	5		5	55		55	60
Technology and Career Studies	19		19	41		41	60
Urban Affrs, Soc Sci and Social Wk	48		48	128		128	176
Non-degree and Undeclared	8		8	145		145	153
sub-total	550		550	1360		1360	1910
David A. Clarke School of Law	0	123	123	0	133	133	256
UDC-Total	1,843	385	2,228	2,023	248	2,272	4,500

3.9 Enrollment by Degree Program

Table 13: Fall Enrollment by Degree Program

Level		Major	Fall 2016			Fall 2017			Fall 2018		
			FT	PT	Total	FT	PT	Total	FT	PT	Total
College of Agriculture, Urban Sustainability, & Environmental Sciences											
BA/BS/BE	Architecture	39	11	50	51	12	63	47	15	62	
	Environmental Sciences - General	0	2	2	0	2	2	0	0	0	
	Environmental Science (EVSC)	0	1	1	0	1	1	0	0	0	
	Nutrition and Food Science (BS)	30	7	37	37	13	50	30	14	44	
	Nursing	25	5	30	4	4	8	2	1	3	
	Health Education	40	23	63	32	16	48	20	14	34	
	Urban Sustainability(BA)				9	1	10	16	5	21	
	Non-degree &Undeclared	1	50	51	0	43	43	1	46	47	
	Sub-total	135	99	234	133	92	225	116	95	211	
Masters	Nutrition & Dietetics (MS)	12	7	19	4	6	10	3	1	4	
	Water Resource Management ((PSM)	10	4	14	16	4	20	12	9	21	
	Architecture(MS)	13	3	16	19	2	21	20	3	23	
	Urban Agriculture-MS				0	1	1	0	1	1	
	Urban Sustainability (MS)							1	0	1	
	Sub-total	35	14	49	39	13	52	36	14	50	
Subtotal		170	113	283	172	105	277	152	109	261	
		60%	40%	100%	62%	38%	100%	58%	42%	100%	
School of Business & Public Administration											

Level	Major	Fall 2016			Fall 2017			Fall 2018		
		FT	PT	Total	FT	PT	Total	FT	PT	Total
BA/BS/BE	Accounting	79	40	119	77	42	119	62	42	104
	Business Management	213	90	303	223	79	302	205	81	286
	Management Information Systems	4	2	6	0	2	2	0	1	1
	Economics	0	0	0	0	0	0	0	0	0
	Finance	2	1	3	0	0	0	2	1	3
	Marketing	2	1	3	0	1	1	0	0	0
	Procurement & Public Contracting	1	5	6	1	2	3	0	1	1
	Procurement-Pub Con (CERT)	0	1	1	0	0	0	0	1	1
	Entrepreneurship (Certificate)	0	1	1	0	0	0	0	0	0
	Undeclared/ None- Degree	0	1	1	0	0	0	0	0	0
	Sub-total	301	142	443	301	126	427	269	127	396
Masters	Business Administration (MBA)	29	7	36	22	5	27	30	5	35
	Public Administration (MPA)	11	3	14	17	3	20	20	7	27
	Grad Certfiate/Nonprofit Management	1	2	3	2	1	3	0	1	1
	None Degree	0	0	0	0	0	0	0	1	1
	Sub-total	41	12	53	41	9	50	50	14	64
Subtotal		342	154	496	342	135	477	320	140	460
%		69%	31%	100%	72%	28%	100%	70%	30%	100%
College of Arts & Sciences										
BA/BS/BE	Administration of Justice	81	41	122	64	35	99	56	40	96
	Art	29	9	38	30	14	44	43	8	51
	Biology	61	37	98	74	24	98	101	34	135
	Chemistry	7	7	14	8	7	15	11	7	18
	Digital Media				2	1	3	24	5	29
	Early Childhood Education	19	19	38	17	25	42	18	27	45
	Elementary Education	14	9	23	19	9	28	16	6	22
	English	41	15	56	29	17	46	31	20	51
	Graphic Communications	0	0	0	0	0	0	0	0	0
	Graphic Design	5	1	6	2	0	2	0	0	0
	History	0	1	1	0	0	0	0	0	0
	Human Development (BA)	28	43	71	23	51	74	27	44	71
	Mathematics	7	5	12	11	6	17	15	7	22
	Mass Media Art	20	7	27	6	5	11	0	1	1
	Music	15	18	33	19	14	33	16	12	28
	Physics	0	0	0	0	0	0	0	0	0
	Political Science	94	42	136	93	37	130	75	44	119
	Psychology	70	29	99	77	30	107	65	32	97

Level	Major	Fall 2016			Fall 2017			Fall 2018		
		FT	PT	Total	FT	PT	Total	FT	PT	Total
	Sociology & Anthropology	1	4	5	0	0	0	0	0	0
	Social Work	63	38	101	46	49	95	47	33	80
	Spanish	0	0	0	0	0	0	0	0	0
	Special Education	8	6	14	6	7	13	9	7	16
	Theatre Arts	0	0	0	0	0	0	0	0	0
	Undeclared/Non-Degree	6	56	62	5	60	65	5	49	54
	Sub-total	569	387	956	531	391	922	559	376	935
Masters	Applied Statistics (MS)	0	0	0	0	0	0	0	0	0
	Adult Education	1	1	2	0	10	10	0	11	11
	Adult Education (Certificate)	0	25	25	0	19	19	0	8	8
	Cancer Biology Prevention and Control (MS)	6		6	5	0	5	7	0	7
	Clinical Rehabilitation							3	0	3
	Counseling (MS)	28	14	42	35	11	46	24	14	38
	Early Childhood Education (MA)	13	1	14	12	0	12	8	1	9
	Homeland Security	20	22	42	16	25	41	21	22	43
	Mental Health							1	0	1
	Rehabilitation Counseling	31	3	34	51	5	56	41	6	47
	Speech/Language Pathology (MS)	44	3	47	40	2	42	33	0	33
	Teaching (MAT)	26	1	27	32	1	33	22	5	27
	Undeclared/Non-Degree	0	2	2	0	2	2	2	9	11
	Sub-total	169	72	241	191	75	266	162	76	238
Subtotal		738	459	1,197	722	466	1,188	725	448	1,173
%		62%	38%	100%	61%	39%	100%	62%	38%	100%
School of Engineering & Applied Sciences										
BS/BE	Biomedical Engineering				7	0	7	12	1	13
	Computer Sciences	70	27	97	85	21	106	100	19	119
	Civil Engineering	77	14	91	78	8	86	68	6	74
	Electrical Engineering	55	16	71	58	15	73	46	12	58
	Fire Science Administration	0	0	0	0	0	0	0	0	0
	Information Tech.	55	15	70	38	21	59	49	16	65
	Mechanical Engineering	82	7	89	96	8	104	74	11	85
	Undeclared/Non-Degree							0	1	1
	Sub-total	339	79	418	362	73	435	349	66	415
	Civil Engineering-MS							1	2	3
	Computer Science & Engineering							3	4	7
Masters	Computer Sciences(MS)	12	7	19	12	2	14	3	4	7

Level	Major	Fall 2016			Fall 2017			Fall 2018		
		FT	PT	Total	FT	PT	Total	FT	PT	Total
	Electrical Engineering (MS)	4	2	6	6	0	6	7	1	8
	Sub-total	16	9	25	18	2	20	14	11	25
Subtotal		355	88	443	380	75	455	363	77	440
%		80%	20%	100%	84%	16%	100%	83%	18%	100%
Community College										
Associate	Architectural Engineering Technology	6	20	26	9	13	22	10	14	24
	Automotive Technology	0	0	0	0	0	0	0	0	0
	Aviation Maintenance Technology	8	24	32	10	25	35	11	37	48
	Administrative Office Management	7	23	30	4	14	18	2	14	16
	Business Technology	44	136	180	70	106	176	67	89	156
	Computer Accounting Technology	11	55	66	14	31	45	14	24	38
	Corrections Administration	11	22	33	5	15	20	5	11	16
	Computer Science Technology	41	104	145	51	112	163	41	115	156
	Construction Management	13	21	34	7	10	17	5	14	19
	Education	40	163	203	35	150	185	33	160	193
	Fashion Merchandising`	20	44	64	13	24	37	14	27	41
	Fire Science	0	2	2	0	0	0	0	0	0
	Graphic Communication Technology	0	0	0	0	0	0	0	0	0
	Graphic Design	17	38	55	23	33	56	29	40	69
	Hospitality Management and Tourism	8	23	31	10	27	37	9	21	30
	Law Enforcement	40	94	134	44	96	140	43	117	160
	Legal Assistant	13	27	40	9	23	32	13	21	34
	Liberal Studies (AA)	61	174	235	91	220	311	113	192	305
	Liberal Studies (AAS)	81	211	292	83	228	311	119	249	368
	Mortuary Science	5	26	31	0	0	0	0	3	3
	Music	6	16	22	8	17	25	9	15	24
	Nursing	1	8	9	0	0	0	1	9	10
	Respiratory Therapy	16	60	76	10	45	55	4	43	47
	Undeclared/ None Degree	5	154	159	7	158	165	8	145	153
	Sub-total	454	1,445	1,899	503	1,347	1,850	550	1,360	1,910
%		24%	76%	100%	27%	73%	100%	29%	71%	100%

3.10 Enrollment by D.C. Ward

Table 14: Student Enrollment by D.C. Ward*

D.C. Ward	Fall 2016				Fall 2017				Fall 2018			
	Flagship	CC	Law	UDC Total	Flagship	CC	Law	UDC Total	Flagship	CC	Law	UDC Total
Ward 1	178	176	13	367	165	170	15	350	182	209	13	404
Ward 2	40	33	4	77	48	20	3	71	52	25	5	82
Ward 3	198	45	34	277	221	41	32	294	205	40	27	272
Ward 4	317	384	13	714	340	357	12	709	364	370	14	748
Ward 5	171	244	22	437	198	290	17	505	208	244	14	466
Ward 6	114	122	18	254	111	132	10	253	120	119	9	248
Ward 7	324	515	7	846	340	493	4	837	308	549	6	863
Ward 8	91	152	3	246	101	150	3	254	99	155	1	255
Total DC	1,433	1,671	114	3,218	1,524	1,653	96	3,273	1,538	1,711	89	3,338
Out-of-DC	986	228	172	1,386	873	197	184	1,254	796	199	167	1,162
Total	2,419	1,899	286	4,604	2,397	1,850	280	4,527	2334	1910	256	4,500

* Student Enrollment by D.C. Ward is based on student address (zip code), not on student tuition classification.

3.11 International Student Enrollment

Table 15: International Student Enrollment by Visa Type

Visa	Fall 2016			Fall 2017			Fall 2018		
	Flagship	CC	UDC Total	Flagship	CC	UDC Total	Flagship	CC	UDC Total
Asylum	0	0	0	0	1	1	1	1	2
Business	0	0	0	2	1	3	1	0	1
Diplomat	22	2	24	20	3	23	13	2	15
Exchange Visa	6	7	13	4	4	8	3	3	6
Int'l Organization	1	1	2	5	0	5	4	0	4
Refugee	0	0	0	0	0	0	0	0	0
Student Visa (F-1)	481	43	524	386	24	410	288	25	313
Other	20	3	23	33	12	45	51	9	60
Total	530	56	586	450	45	495	361	40	401

Table 16: International Student Enrollment by Country of Origin (Top 10)

Fall 2016				Fall 2017				Fall 2018			
Country	CC	Flagship	UDC Total	Country	CC	Flagship	UDC Total	Country	CC	Flagship	UDC Total
Saudi Arabia	4	344	348	Saudi Arabia	3	248	251	Saudi Arabia	2	146	148
Jamaica	3	16	19	Jamaica	1	27	28	Jamaica	0	20	20
Nigeria	8	11	19	Qatar	0	18	18	Qatar	0	11	11
Qatar		9	9	Nigeria	7	6	13	Nigeria	3	5	8
Cote d'Ivoire	1	6	7	Brazil	3	5	8	Canada	1	6	7
Gabon	2	5	7	Canada	1	7	8	Brazil	2	4	6
Kenya	3	4	7	Cote d'Ivoire	1	5	6	Cote d'Ivoire	0	5	5
Vietnam		7	7	Egypt	1	4	5	Egypt	0	4	4
Brazil	1	5	6	Ethiopia	0	5	5	Ethiopia	0	4	4
Canada		6	6	Equatorial Guinea	2	3	5	Poland	0	4	4

3.12 DC-UP Student Information

Table 17: DC-UP Students by High School

High School	Count
Albania (High School)	1
Albert Einstein High School	1
Annandale High School	1
Archbishop Carroll High School	1
Bell Multicultural (CHEC) High School	17
Benjamin Banneker Academic High School	1
Calvin Coolidge High School	4
Capital City Public Charter School	2
Cesar Chavez Capitol Hill Public Charter School	2
Cesar Chavez Public Charter School-Parkside	1
Cypress Creek High School	1
Dacula High School	1
Damascus High School	1
Dr Phillips High School	1
Duke Ellington School Of Arts	2
Eastern Senior High School	1
Eastwood High School	1
Francis L Cardozo High School	10
Frank W Ballou High School	3
Gaithersburg High School	1
High School/GED	2
Idea Public Charter School	1
Jamaica (High School)	30
Martin Luther King Jr High School	1
Mashpee High School	1
Mckinley Technology High School	4
Northside High School	2
Northwestern High School	1
Olympic Heights Community High School	1
Paul Laurence Dunbar High School	3
Paul Public Charter School	5
Phelps Career Senior High School	1

High School	Count
Richard Wright Public Charter High School	1
Roosevelt Evening High School	3
Roosevelt High School	4
School Without Walls	2
Springbrook High School	1
Wicomico High School	1
Woodrow Wilson Senior High School	4
Total	121

Average High School GPA was 3.57

3.13 University Athletes by Sports

Table 18: NCAA Division II (w/o football)

Team	Men	Women	Total
Basketball	11	11	22
Soccer	26	N/A	26
Tennis	2	7	9
Cross Country/Track & Field	N/A	11	11
Lacrosse	24	10	34
Total	63	39	102

3.14 Spring Enrollment

Table 19: Spring Enrollment by College

	Spring 2017	Spring 2018	Spring 2019	Percent Change Spring 2018-19
Enrollment (Headcount) Distribution by College				
Flagship				
College of Agriculture, Urban Sustainability & Environmental Sciences (CAUSES)	277	281	257	-9%
College of Arts & Sciences (CAS)	1,243	1,143	1,111	-3%
School of Business & Public Administration (SBPA)	486	445	429	-4%
School of Engineering & Applied Sciences (SEAS)	440	447	440	-2%
Flagship Subtotal	2,446	2,316	2,237	-3%
David A. Clarke School of Law	264	274	234	-15%
UDC- Community College	1,977	1,875	1,799	-4%
Total	4,687	4,465	4,270	-4%

Full-Time Equivalent (FTE) Distribution by College				
Flagship				
College of Agriculture, Urban Sustainability & Environmental Sciences (CAUSES)	193	213	196	-8%
College of Arts & Sciences (CAS)	1006	946	906	-4%
School of Business & Public Administration (SBPA)	415	392	380	-3%
School of Engineering & Applied Sciences (SEAS)	410	414	407	-2%
David A. Clarke School of Law	230	239	203	-15%
UDC -Community College	1323	1281	1237	-3%
Total	3,577	3,486	3,329	-5%

Note:

UG FTE=FT + (Total Credit Hours taken by PT UG/12)

Grad FTE=FT + (Total Credit Hours taken by PT Grad/9)

LAW FTE=FT + (PT LAW*0.75)

Table 20: Spring Student Enrollment by Program

Level	Major	Spring 2017			Spring 2018			Spring 2019		
		FT	PT	Total	FT	PT	Total	FT	PT	Total
Coll Agri/Urban Sust/Envir Sci										
Undergrad	Architecture (BS)	42	17	59	37	20	57	40	15	55
	Environmental Sci Urban Sust		1	1	0	0	0	0	0	0
	Environmental Science (Gen)		2	2	0	0	0	0	0	0
	Health Education	34	22	56	26	20	46	18	16	34
	Nursing (BS)	5	7	12	2	4	6	1	0	1
	Nutrition and Dietetics (BS)	26	15	41	33	17	50	28	15	43
	Urban Sustainability(BA)				16	5	21	21	13	34
	None		52	52	0	48	48	0	40	40
	Undeclared	1	3	4	0	4	4	0	4	4
		Sub-total	108	119	227	114	118	232	108	103
Graduate	Architecture (MARC)	15	3	18	20	3	23	15	8	23
	Nutrition and Dietetics (MS)	7	9	16	3	3	6	1	1	2
	Urban Agriculture-MS				1		1	2	1	3
	Urban Sustainability (MS)							3	1	4
	Water Resource Mangement	10	6	16	15	4	19	8	6	14
	Sub-total	32	18	50	39	10	49	29	17	46
Total		140	137	277	153	128	281	137	120	257
College of Arts & Sciences										
Undergrad	Administration of Justice (BA)	79	48	127	63	37	100	51	29	80
	Anthropology							0	0	0
	Art (BA)	30	19	49	42	10	52	38	20	58
	Biology (BS)	64	36	100	73	27	100	100	32	132
	Chemistry (BS)	8	7	15	7	10	17	12	8	20
	Digital Media				10	1	11	23	12	35
	Early Childhood Education	14	23	37	23	19	42	15	27	42
	Elementary Education (BA)	14	10	24	18	7	25	13	5	18
	English (BA)	37	22	59	25	17	42	26	13	39
	Graphic Communications	0	0	0	0	0	0	0	0	0
	Graphic Design	4	3	7	0	0	0	0	0	0
	History (BA)		1	1	0	0	0	0	0	0
	Human Development	17	55	72	27	56	83	25	48	73
	Mass Media Art	16	8	24	3	5	8	0	0	0
	Mathematics	10	6	16	8	6	14	11	6	17
	Music (BM)	21	15	36	16	12	28	15	15	30
	Physics (BS)	0	0	0	0	0	0	0	0	0
	Political Science	95	48	143	94	34	128	74	39	113
	Psychology	71	37	108	70	27	97	53	37	90

Level	Major	Spring 2017			Spring 2018			Spring 2019		
		FT	PT	Total	FT	PT	Total	FT	PT	Total
	Social Work	58	53	111	43	42	85	42	41	83
	Sociology - Anthropology	1	1	2	0	0	0	0	0	0
	Special Education	3	6	9	6	6	12	7	6	13
	Theatre Arts	0	0	0	0	0	0	0	0	0
	None	6	62	68	4	49	53	2	45	47
	Undeclared	1	1	2	1		1	1	11	12
	Sub-total	549	461	1,010	533	365	898	508	394	902
Graduate	Adult Education				0	8	8	1	13	14
	Adult Education(Certifictc)		20	20	0	14	14	0	4	4
	Applied Statistics (MS)	0	0	0	0	0	0	0	0	0
	Cancer Biol, Prevent - Control	5		5	7	0	7	4	0	4
	Clinical Rehabilitation							2	0	2
	Counseling	27	14	41	26	12	38	20	11	31
	Early Childhood Education (MA)	10	4	14	11	2	13	9	5	14
	Homeland Security (MS)	23	26	49	14	23	37	17	16	33
	Mental Health				1		1	1	0	1
	None		3	3	0	1	1	2	6	8
	Rehabilitation Counseling	30	2	32	49	5	54	36	7	43
	Speech/Language Pathology	43	2	45	36	3	39	32	0	32
	Teaching	22	2	24	26	7	33	16	7	23
	Sub-total	160	73	233	170	75	245	140	69	209
Total		709	534	1,243	703	440	1,143	648	463	1,111
School Business & Public Admin										
Undergrad	Accounting	74	41	115	71	36	107	59	30	89
	Business Management	210	96	306	198	80	278	184	72	256
	Economics				0	0	0	0	0	0
	Finance		1	1	0	0	0	12	2	14
	Management Information Systems	3	1	4	0	2	2	0	1	1
	Marketing	1		1	0	0	0	0	0	0
	None				0	0	0	0	0	0
	Procurement - Pub Contracting	2	2	4	1	1	2	0	2	2
	Procurement-Pub Con (CERT)				0	1	1	0	0	0
	Entrepreneurship (Certificate)		1	1	0	0	0	0	0	0
	Undeclared		1	1	0	0	0	0	0	0
	Sub-total	290	143	433	270	120	390	255	107	362
Graduate	Business Administration (MBA)	24	9	33	25	2	27		4	33
	Nonprofit Management-GRAD CERT	0	0	0	1	2	3	0	1	1
	Public Administration (MPA)	13	7	20	21	4	25	27	6	33
	Sub-total	37	16	53	47	8	55	56	11	67

Level	Major	Spring 2017			Spring 2018			Spring 2019		
		FT	PT	Total	FT	PT	Total	FT	PT	Total
Total		327	159	486	317	128	445	311	118	429
School of Engineer&Applied Sci										
Undergrad	Biomedical Engineering				7	1	8	17	1	18
	Civil Engineering	79	9	88	76	6	82	67	11	78
	Computer Science	77	16	93	85	18	103	95	28	123
	Electrical Engineering	53	16	69	51	13	64	41	13	54
	Information Technology	50	17	67	43	17	60	47	13	60
	Mechanical Engineering	85	15	100	84	20	104	62	16	78
	None							0	1	1
	Undeclared				0	0	0	0	0	0
	Sub-total	344	73	417	346	75	421	329	83	412
	Civil Engineering-MS							3	2	5
Graduate	Computer Science (MS)	11	6	17	7	9	16	5	2	7
	Electrical Engineering (MS)	5	1	6	7	2	9	6	1	7
	Mechanical Engineering(MS)							1	0	1
	Comp Science & Engin (PhD)							5	3	8
	None				0	1	1	0	0	0
	Sub-total	16	7	23	14	12	26	20	8	28
	Total	360	80	440	360	87	447	349	91	440
David A Clarke School of Law		127	137	264	133	141	274	111	123	234
Community College										
Undergrad	Admin Office Mgmt (AAS)	8	24	32	3	12	15	2	7	9
	Architectural Engineering Tech	10	21	31	5	13	18	12	6	18
	Aviation Maint Tech (AAS)	10	22	32	15	28	43	18	34	52
	Business Administration (AS)							7	15	22
	Business Technology (AAS)	59	126	185	64	111	175	57	73	130
	Computer Accounting Tech (AAS)	11	47	58	16	26	42	14	19	33
	Computer Science Technology	53	109	162	49	107	156	51	88	139
	Construction Management	9	18	27	6	20	26	4	7	11
	Corrections Administration	8	22	30	3	16	19	7	11	18
	Education (AA)	40	175	215	32	163	195	39	181	220
	Fashion Merchandising	20	27	47	18	29	47	14	23	37
	Graphic Design (AA)	19	40	59	20	34	54	26	39	65
	Hospitality Mgmt - Tourism	10	22	32	11	24	35	7	21	28
	Law Enforcement	49	94	143	43	113	156	48	97	145
	Legal Assistant(AAS)	16	25	41	14	19	33	11	18	29
	Liberal Studies (AA)	68	192	260	79	242	321	78	150	228

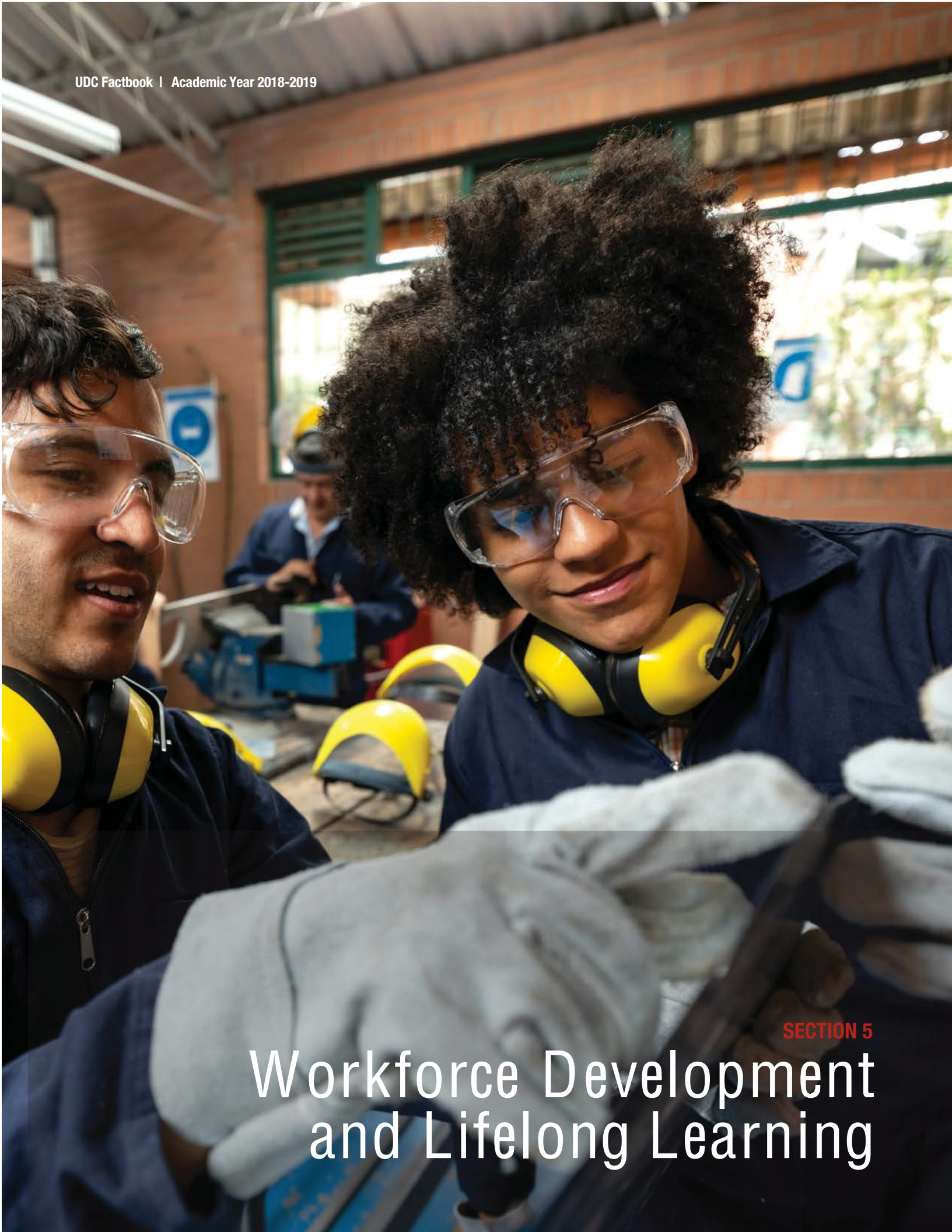
Level	Major	Spring 2017			Spring 2018			Spring 2019		
		FT	PT	Total	FT	PT	Total	FT	PT	Total
	Liberal Studies (AS)	72	208	280	67	216	283	111	224	335
	Mortuary Science	4	22	26	1	1	2	0	2	2
	Music (AA)	7	16	23	6	22	28	11	9	20
	Nursing (AAS)		3	3	1	6	7	0	5	5
	Respiratory Therapy	16	55	71	9	40	49	3	38	41
	None	4	191	195	0	156	156	0	205	205
	Undeclared	6	19	25	3	12	15	2	5	7
	Sub-total	499	1,478	1,977	465	1,410	1,875	522	1,277	1,799
Overall UDC		2,162	2,525	4,687	2,131	2,334	4,465	2,078	2,192	4,270

SECTION 4

Land-grant Programs in College of Agriculture, Urban Sustainability and Environmental Sciences

4.1 Landgrant Activities by Landgrant Center

(See and insert the CAUSES document here)



SECTION 5

Workforce Development and Lifelong Learning

5.1 Enrollment and Completion by Demographic Characteristics

Table 21: Workforce Development Student Body Counts and Completion AY 2018-2019

	Enrolled		Completed*	
	Number	Percentage	Number	Percentage
Total	2,473		1,577	
Age				
19 or less	63	3%	36	2%
20 - 29	1011	41%	589	37%
30 - 39	677	27%	444	28%
40 - 49	382	15%	269	17%
50+	340	14%	239	15%
Average Age	35		36	
Gender				
Female	1,669	67%	1044	66%
Male	804	33%	533	34%
Race/Ethnicity				
Asian	7	0%	5	0%
Black	1,347	54%	824	51%
Hawaiian	2	0%	1	0%
Hispanic	6	0%	3	0%
More than One Race	29	1%	15	1%
Native American	1	0%	1	0%
White	11	0%	8	1%
Unknown	1,070	43%	720	46%
State				
DC	2,466	100%	1,574	100%
MD	5	0%	2	0%
VA	1	0%	-	0%
Unknown	1	0%	1	0%
Employment Status at Intake				
Employed Full-Time	569	23%	378	24%
Employed Part-Time	476	19%	308	20%
Minor	2	0%	-	0%
Retired	9	0%	8	0%
Unemployed	1,416	57%	883	56%
Unknown	1	0%	-	0%

	Enrolled		Completed*	
	Number	Percentage	Number	Percentage
Education Level				
Advanced Foreign Degree	22	1%	18	1%
Advanced US Degree	146	6%	101	6%
Foreign High School	82	3%	66	4%
GED	216	9%	127	8%
GED/TASC	1	0%	-	0%
IEP	1	0%	1	0%
No Diploma	177	7%	109	7%
US High School Local	1,813	73%	1,147	73%
US High School Regents	15	1%	8	0%
Most Recent Site				
DC Department of Corrections	59	2%	58	4%
DC Infrastructure Academy	1	0%	-	0%
Greenleaf Gardens	95	4%	42	3%
UDC-CC, Backus	792	32%	543	34%
UDC-CC, PR Harris	794	32%	497	32%
UDC-CC, Shadd	504	20%	268	17%
United Medical Center	228	9%	169	11%

* Number of students completing at least one course during the time period.

5.2 Enrollment and Completion by Course

Table 22: Enrollment by Course AY 2018-2019

Course Name	Enrolled*	Completed*
Apartment Maintenance	9	3
Automotive Technician I	-	-
Building Information Modeling (BIM)	7	4
Child Development Associate - Comprehensive I	188	94
Child Development Associate - Comprehensive II	127	85
Computer Foundations-Technician	4	4
Computer Technician - Network +	148	97
Computer Technician - Security +	124	58
Construction Craft Skills and Application	153	103
Construction Craft Skills and Application (Math Module)	83	62
Dialysis Technician	21	14
Direct Support Professional	14	11
EKG Technician	25	7
Electrical Level 1- Circuits, Conductors and Cables	16	9
Electronic Health Records	37	18
Environmental Services	18	11
First Aid & Cardiopulmonary Resuscitation (CPR)	3	1
Food and Beverage Service - Entry Level (Hospitality and Tourism)	73	33
Foundation of CISCO	8	8
Foundation of Information Technology	34	32
Guest Service and Front Desk Rep.	5	3
Guest Services (Hospitality and Tourism)	97	88
Heating Ventilation and Air Conditioning - HVAC Installation	151	105
Hospitality and Tourism (PSSTT)	36	28
Hospitality and Tourism Management Capstone	5	-
Hospitality Guest Services (DOES HOSP)	29	23
Hotel and Lodging Operations	31	19
Intro to Microsoft Office Suite	72	27
Introduction to Medical Billing and Coding	94	62
IT Fundamentals and Computer Technician - A+	372	173
Language Arts and Math Skills Fundamentals and Applications	80	37
Leasing for Property Management	167	65
Mathematics Fundamentals and Applications	133	79
Medical Assistant	104	71
Medical Billing and Coding Boot Camp	4	4
Medical Office Administrative Professional	374	232
Nursing Assistant-Practicum	78	53

Course Name	Enrolled*	Completed*
Nursing Assistant-Theory and Lab	79	59
Occupational Safety and Health Administration - OSHA 10 Hazard Recognition	1	-
Patient Care Technician (PCT)	25	16
Pharmacy Technician	19	14
Phlebotomy Technician	81	57
Project Management	262	131
Quick Path To Energy	1	-
QuickPath to Energy/Foundation to Energy Course	31	22
QuickPath to Energy/Foundation to Energy Lab	30	22
Refrigeration Technician Program (HVAC/EPA Section 608 Universal)	128	56
Spanish in the Workplace	79	39
Grand Total	3,660	2,139

* Duplicates exist as students can be in multiple courses.

5.2 WDLL Certifications

Table 23: Workforce Development Certification Received AY 2018-2019

Certification	Count
AHLEI Certified Front Desk Representative	61
AHLEI Cert Guest Service Professional	169
AHLEI Found in H&T Year 1	22
AHLEI Found in H&T Year 2	3
AHLEI Hotel Property Maintenance	15
AHLEI Restaurant Server	28
AHLA Certified Maintenance	15
Child Develop Assoc	4
Child Develop Assoc Certification	2
CompTIA A+	14
CompTIA Network+	8
CompTIA Security+	6
EPA Section 608 ACR	27
ESCO-Gas H.E.A.T.	60
ESCO-H.E.A.T. Core	56
Gas H.E.A.T. Performance	11
NALP Leasing for Property Management	25
NCCER Construction Core	66
NHA - Certified Billing and Coding Specialist (CBCS)	31
NHA - Certified Clinical Medical Assistant (CCMA)	45
NHA - Certified EKG Technician (CET)	7
NHA - Certified Medical Administrative Assistant (CMAA)	119
NHA - Certified Patient Care Technician (CPCT)	4
NHA - Certified Pharmacy Technician (CPhT)	6
NHA - Certified Phlebotomy Technician (CPT)	41
NHA - Electronic Health Records Specialist (CEHRS)	7
National Safety Council-CPR	317
National Safety Council-First Aid	316
OSHA10	16
PMI - Certified Associate for Project Management (CAPM)	22
ServSafe Alcohol	16
ServSafe Food Handler	25
ServSafe Food Manager	7
Grand Total	1,571

Note: Some certifying agencies do not report results to WDLL.

SECTION 6

Student Outcomes: Retention, Graduation & Completion Rates

6.1 First Time in College Student Retention Rates

Table 24: FTIC Retention Rate

		Fall 2015 Cohort		Fall 2016			Fall 2017		
	Cohort Size	Returned Next Fall	Retention Rate	Cohort Size	Returned Next Fall	Retention Rate	Cohort Size	Returned Next Fall	Retention Rate
FT/PT									
Full Time	220	112	51%	240	147	61%	297	169	57%
Part Time	319	122	38%	242	114	47%	229	98	43%
Total	539	234	43%	482	261	54%	526	267	51%
Gender									
Female	279	111	40%	249	134	54%	291	154	53%
Male	248	116	47%	222	122	55%	218	106	49%
Not Stated	12	7	58%	11	5	45%	17	7	41%
Total	539	234	43%	482	261	54%	526	267	51%
Ethnicity									
American Indian	2	0	0%	2	1	50%	1	1	100%
Asian	6	4	67%	6	4	67%	6	3	50%
Black	379	151	40%	305	162	53%	337	160	47%
Hispanic	82	39	48%	63	36	57%	81	47	58%
White	13	4	31%	16	11	69%	15	8	53%
Not Stated	57	36	63%	90	47	52%	86	48	56%
Total	539	234	43%	482	261	54%	526	267	51%
Degree Objective									
Baccalaureate	110	56	51%	143	102	71%	171	101	59%
Associates	425	178	42%	338	158	47%	355	166	47%
Nondegree	4	0	0%	1	1	100%	0	0	n/a
Total	539	234	43%	482	261	54%	526	267	51%
College									
College of Arts & Sci	53	26	49%	51	36	71%	76	52	68%
School of Engineering	28	16	57%	48	37	77%	45	23	51%
School of Business	21	9	43%	36	23	64%	34	19	56%
CAUSES	9	5	56%	8	6	75%	16	7	44%
Community College	428	178	42%	339	159	47%	355	166	47%
Total	539	234	43%	482	261	54%	526	267	51%

6.2 Graduation Rates and Outcome Measures

6.2.1 Full-time First-time in College Graduation Rates

Table 25: First Time Full Time Six Year Graduation Rate for Baccalaureate Level*

	2010	2011	2012
Graduation Rate for Bachelor's cohort	33%	44%	45%
Total Number of Bachelor's Degree Completers within 150% of normal time	17	37	43
Total Number of Students in the Adjusted Cohort	52	84	96

Table 26: First Time Full Time Three Year Graduation Rate for Associate Level*

	2010	2011	2012
Graduation Rate for Associate's cohort	8%	6%	5%
Total Number of Associate's Degree Completers within 150% of normal time	19	15	5
Total Number of Students in the Adjusted Cohort	232	243	108

Table 27: Overall Graduation Rate*

	2010	2011	2012
Graduation Rate for all Cohort Students	13%	16%	24%
Total Number of Completers within 150% of normal time	36	52	48
Total Number of Students in the Adjusted Cohort	284	327	204

*Based on the published definition on the Department of Education Integrated Postsecondary Education Data System (IPEDS), the university graduation rate (GR) is defined as follows: Graduation rate is percentage of full-time, first-time, degree/certificate-seeking undergraduate students in a particular year (cohort) finishing their degree within 150 percent of normal time to completion starting from the cohort year. For Bachelor's degree, it is six years graduation rate. For Associate's degree, it is three years graduation rate.

6.2.2 Outcome Measures: Four-year, Six-year and Eight-year Rates

Table 28: Full year Student Cohort: 2010/2011

Cohort	4-year Award Rate	6-year Award Rate	8-year Award Rate	Still enrolled at UDC after 8-years	Did not receive an award and subsequently enrolled at another institution
Full-time, First-time	13%	18%	20%	2%	28%
Part-time, First-time	5%	11%	14%	2%	24%
Full-time, Non-first-time	40%	48%	49%	1%	27%
Part-time, Non-First-time	23%	28%	32%	0%	30%

6.3 Degree Completions/Awards

Table 29: Degree Conferred by College and Level

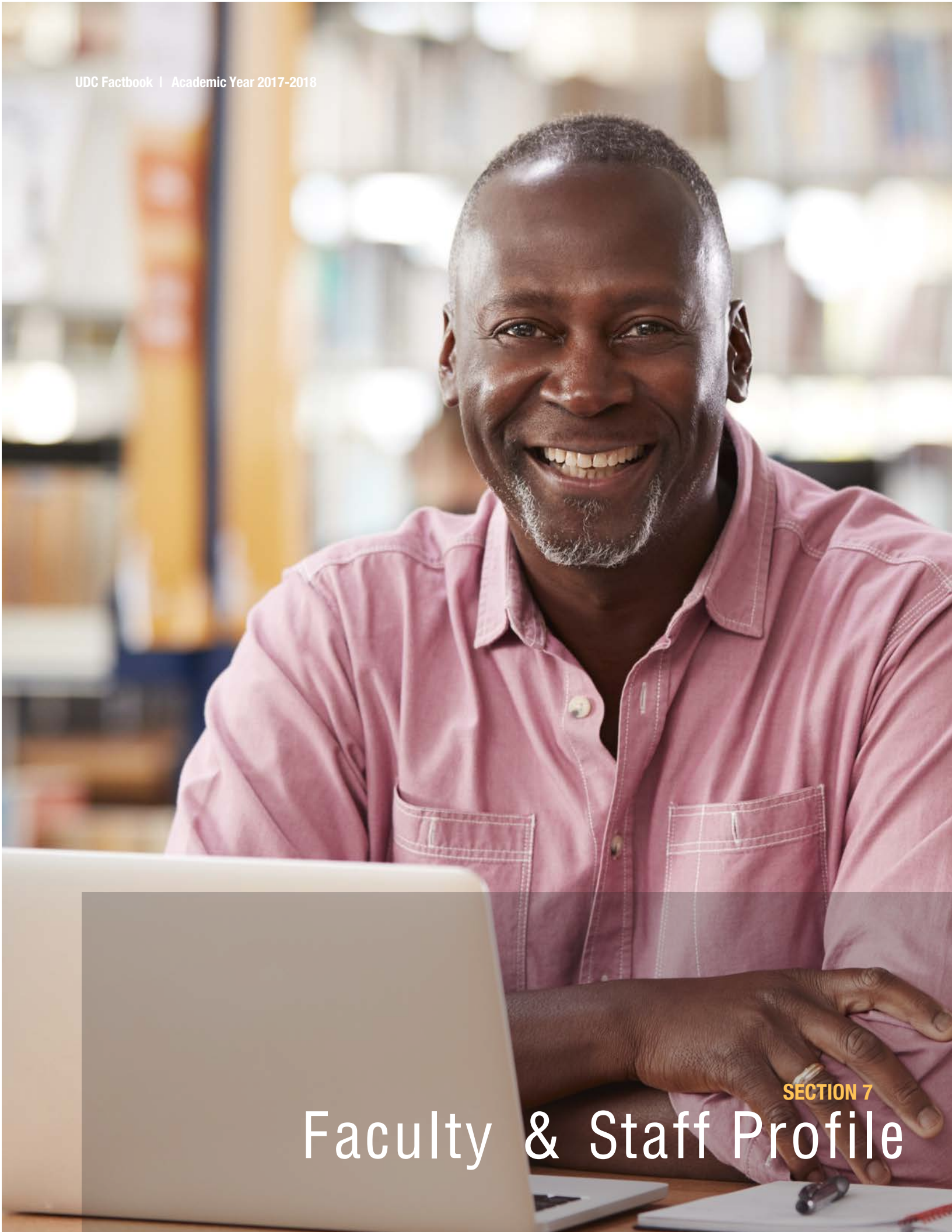
College/School	Level of Award	2016 - 2017	2017 - 2018	2018 - 2019
College of Agriculture, Urban Sustainability & Environmental Sciences (CAUSES)	Baccalaureate	47	41	29
	Masters	15	15	9
	Total	62	56	38
College of Arts & Science (CAS)	Baccalaureate	193	172	155
	Masters	68	71	94
	Grad. Certificate	0	5	2
	Total	261	248	251
School of Business & Public Administration (SBPA)	Baccalaureate	110	71	96
	Masters	19	20	25
	Total	129	91	121
School of Engineering & Applied Sciences (SEAS)	Baccalaureate	45	56	107
	Masters	8	8	5
	Total	53	64	112
David A. Clarke School of Law	Juris Doctor	71	67	65
	LLM	0	0	0
	Total	71	67	65
UDC – Community College	Associate	241	176	195
	Total	241	176	195
University Total	Associate	241	176	195
	Baccalaureate	395	340	387
	Masters	110	114	133
	Grad. Certificate	0	5	2
	LLM	0	0	0
	Juris Doctor	71	67	65
	Total	817	702	782

Table 30: Degree Conferred by College, Level, and Major

		2016-2017	2017-2018	2018-2019
College of Agriculture, Urban Sustainability, & Environmental Sciences				
BA	Urban Sustainability(BA)		5	10
BS	Architecture	8	12	7
	Environmental Science	0	0	0
	Health Education	10	12	6
	Nutrition and Food Science	8	7	4
	Nursing	21	5	2
	<i>Sub-total</i>	<i>47</i>	<i>41</i>	<i>29</i>
MS	Nutrition and Dietetics	11	8	1
	Urban Agriculture-MS			1
	Architecture	1	4	3
	<i>Sub-total</i>	<i>12</i>	<i>12</i>	<i>5</i>
PSM	Water Resource Management	3	3	4
	<i>Sub-total</i>	<i>3</i>	<i>15</i>	<i>9</i>
Total		62	56	38
School of Business & Public Administration				
BA	Economics	1	0	0
	<i>Sub-total</i>	<i>1</i>	<i>0</i>	<i>0</i>
BBA	Accounting	29	26	28
	Business Management	69	44	66
	Management Information Systems	5	0	0
	Finance	1	0	1
	Marketing	2	1	0
	Procurement & Public Contracting	3	0	1
	<i>Sub-total</i>	<i>109</i>	<i>71</i>	<i>96</i>
MBA	Master of Business Administration	18	8	15
	<i>Sub-total</i>	<i>18</i>	<i>8</i>	<i>15</i>
MPA	Master of Public Administration	1	12	10
	<i>Sub-total</i>	<i>1</i>	<i>12</i>	<i>10</i>
Total		129	91	121
School of Engineering & Applied Sciences				
BS	Computer Science	7	8	16
	Civil Engineering	11	13	28
	Construction Management	1	0	0
	Electrical Engineering	5	6	15
	Information Technology	19	14	22

		2016-2017	2017-2018	2018-2019
	Mechanical Engineering	2	15	26
	Fire Science Administration	0	0	0
	Sub-total	45	56	107
MS	Computer Science	7	6	3
	Electrical Engineering	1	2	2
	Sub-total	8	8	5
	Total	53	64	112
College of Arts & Sciences				
BA	Administration of Justice	35	26	25
	Art	12	12	9
	Digital Media			1
	Early Childhood Education	0	0	2
	Elementary Education	3	0	0
	English	18	9	8
	History	1	0	0
	Human Development	20	17	21
	Mass Media Art	11	6	2
	Political Science	30	40	38
	Sociology & Anthropology	5	0	0
	Spanish	0	0	0
	Theatre Arts	0	0	
	Urban Studies	0	0	0
	Sub-total	135	110	106
BFA	Graphic Design	2	1	0
	Sub-total	2	1	0
BM	Music	1	12	1
	Sub-total	1	12	1
BS	Biology	11	10	10
	Chemistry	2	2	1
	Mathematics	4	2	3
	Physics	1	0	0
	Psychology	17	17	21
	Special Education	0	0	0
	Sub-total	35	31	35
BSW	Social Work	20	18	13
	Sub-total	20	18	13
Grad Certificate	Adult Education(Certificate)	0	5	2
	Adult Education			6
MA	Early Childhood Education	11	6	10

		2016-2017	2017-2018	2018-2019
	Rehabilitation Counseling		10	14
	<i>Sub-total</i>	<i>11</i>	<i>21</i>	<i>32</i>
MAT	Teaching	19	9	21
	<i>Sub-total</i>	<i>19</i>	<i>9</i>	<i>21</i>
MS	Applied Statistics	0	0	0
	Cancer Biology, Prevention & Control	4	3	4
	Counseling	6	5	6
	Rehabilitation Counseling	2		
	Homeland Security	4	11	23
	Speech/Language Pathology	22	27	10
	<i>Sub-total</i>	<i>38</i>	<i>46</i>	<i>43</i>
Total		261	248	251
Community College				
AA	Education	33	33	26
	Graphic Design	8	4	10
	Liberal Studies	17	18	11
	Music	2	0	1
	<i>Sub-total</i>	<i>60</i>	<i>55</i>	<i>48</i>
AAS	Architectural Engineering Tech.	3	1	2
	Aviation Maintenance Tech.	1	0	4
	Administration of Office Management	3	0	1
	Business Technology	30	25	30
	Computer Accounting Technology	12	7	11
	Computer Science Technology	18	14	14
	Construction Management	3	4	1
	Corrections Administration	10	2	0
	Fashion Merchandising	12	5	5
	Graphic Communications Tech	0	0	0
	Hospitality Management & Tourism	6	0	3
	Law Enforcement	20	16	14
	Legal Assistant	5	5	7
	Mortuary Science	3	4	4
	Nursing	7	0	18
	Respiratory Therapy	4	3	7
	<i>Sub-total</i>	<i>137</i>	<i>86</i>	<i>121</i>
AS	Liberal Studies	44	35	26
	<i>Sub-total</i>	<i>44</i>	<i>35</i>	<i>26</i>
Total		241	176	195



SECTION 7

Faculty & Staff Profile

7.1 Employee Summary

Figure 6: UDC Employees Summary

Total number of Employees: 1,012

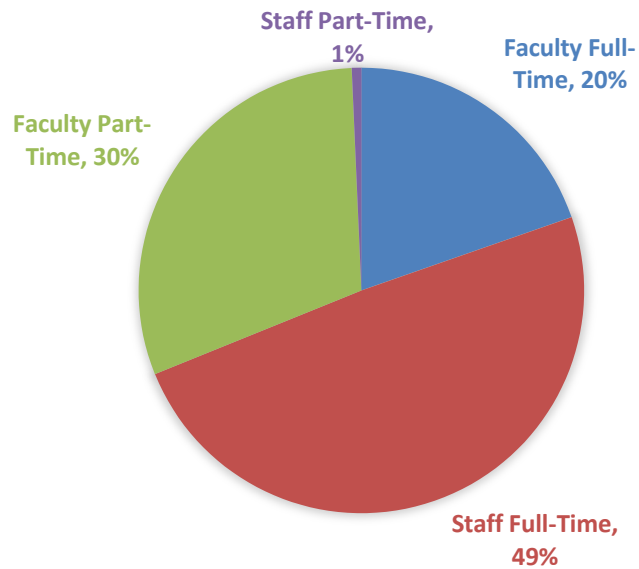


Table 31: UDC Employees by Type

Fall 2018		
Employee Type	Count	Percentage
Faculty Full-Time	199	20%
Staff Full-Time	498	49%
Faculty Part-Time	308	30%
Staff Part-Time	7	1%
Total	1012	100%

7.2 Average Salary for Continuing Full-Time Faculty

**Table 36: Average Salary for Continuing Full-Time Faculty
by Academic Rank and College**

College/School	Professor	Associate Professor	Assistant Professor	Instructor
Community College	N/A	74246.59	65992.32	61032.16
College of Arts and Sciences	92671.7	75330.9	66281.62	62669.15
School of Business & Public Administration	101525	90777	62790	60996
School of Engineering and Applied Sciences (SEAS)	98337	96287	75599	N/A
David A. Clark School of Law	153528.4	N/A	N/A	56174.49
College of Agriculture, Urban Sustainability and Environmental Sciences (CAUSES)	111433.5	77179	67153	N/A
Learning Resources	N/A	66362	59587	N/A



SECTION 8

University Finances

8.1 Sponsored Grants

Table 37: Awards Comparison by College/School/Unit

School/College	FY 2017 Total Amount Awarded	FY 2018 Total Amount Awarded	FY 2019 Total Amount Awarded
CAS	\$5,262,677	\$1,687,300	\$ 3,517,159.00
CAUSES	\$4,967,816	\$5,799,723	\$ 3,520,091.00
Law School	\$781,939	\$439,865	\$ 315,000.00
OSP	\$25,000	\$0	N/A
President Office	\$0	\$74,880	N/A
SBPA	\$3,020,298	\$2,981,475	\$ 3,309,967.00
SEAS	\$976,303	\$511,910	\$ 12,577,507.00
Student Affairs	\$3,391,702	\$2,266,438	\$ 944,510.00
UDC-CC	\$2,049,801	\$1,326,178	\$ 2,435,357.00
WDLL	\$0	\$0	\$ 524,085.00
Others	N/A	N/A	\$ 5,727,313.00
Grand Total	\$20,475,536	\$15,087,769	\$ 32,870,989.00

8.2 Title III

Table: 38 UDC Title III Allocations
U.S. Department of Education

	5-years	5-years (aborted)	5-years	5 years	5 years	2-years	5-years	5-years	10-years		
Title III Allocations	HBCU	HBCU	HBCU	HBCU	HBCU	CCRAA	HBGI	HBGI	SAFRA	SAFRA	TOTAL
											\$
1999-2000	\$1,496,706										1,496,706
											\$
2000-2001	\$1,569,366										1,569,366
											\$
2001-2002	\$2,011,554										2,011,554
											\$
2002-2003	\$2,033,758										2,033,758
											\$
2003-2004	\$2,163,327										2,163,327
											\$
2004-2005		\$2,352,191									2,352,191
											\$
2005-2006		\$2,521,032									2,521,032
											\$
2006-2007		\$2,600,772									2,600,772
											\$
2007-2008			\$ 2,759,097								2,759,097
			\$								\$
2008-2009			3,307,418			\$ 1,104,684					4,412,102
			\$			\$					\$
2009-2010			2,573,833			958,553	\$266,129				3,798,515
			\$			\$					\$
2010-2011		\$938,897	2,904,771			\$ 644,948	\$753,629		\$944,458		4,303,348
			\$								\$
2011-2012			2,739,371				\$733,154		\$974,579		4,447,104
				\$							\$
2012-2013				2,415,669			\$342,522		\$927,789		3,685,980
				\$							\$
2013-2014				2,243,630			\$299,310		\$891,895		3,434,835
				\$							\$
2014-2015				2,869,410				\$161,462	\$992,171		4,023,043
				\$							\$
2015-2016				3,367,307				\$322,796		\$1,073,570	4,763,673
				\$							\$
2016-2017				3,437,183				\$1,007,682		\$1,045,179	5,490,044
					\$						\$
2017-2018					3,219,999			\$1,008,134		\$997,782	5,225,915
					\$						\$
2018-2019					3,443,261			\$1,320,694		\$963,358	5,727,313
											\$
Total	\$9,274,711	\$8,412,892	\$ 14,284,490	\$ 14,333,199	\$ 6,663,260	\$ 2,708,185	\$ 2,394,744	\$ 3,820,768	\$ 4,730,892	\$ 4,079,889	\$ 70,703,030

Note: red=carryover made available

8.3 Financial Aid

Academic Year	2016-2017	2017-2018	2018-2019
Number of FAFSAs Received	10,608	9,905	10,526
Percentage of Enrollment	61%	58%	54%
Pell Eligible Number	6840	6989	6850
Pell Eligible Percent of all FAFSAs received	65%	71%	65%

Total Financial Aid	2016-2017	2017-2018	2018-2019
Total Financial Aid Awarded	\$49,746,527	\$55,576,845	\$55,368,483
Total Scholarships awarded from all sources (i.e. Federal, External and Institutional)	\$4,677,472	\$6,450,624	\$7,308,646
Institutional Scholarships (Scholarships awarded by UDC. Subset of Total Scholarships above.)	\$3,540,349	\$4,823,574	\$5,650,740
Grants	\$13,809,870	\$15,209,590	\$14,915,443
Pell Grants (subset of Grants)	\$11,481,203	\$12,730,737	\$12,709,794
Loans	\$31,096,209	\$33,739,125	\$32,967,344
Private Loans (subset of Loans)	\$523,168	\$465,203	\$744,754

Fund Breakdown:

Scholarship Aid	2016-2017	2017-2018	2018-2019
Average Scholarship Aid Awarded	\$5,989	\$6,812	\$6,612
Number - All students registered in AY receiving scholarship aid	763	897	1086
Percent - All students registered in AY receiving scholarship aid	12%	16%	19%
Number - FTIC students registered in AY receiving scholarship aid	124	181	224
Percent - FTIC students registered in AY receiving scholarship aid	14%	24%	27%

Institutional Scholarship Aid	2016-2017	2017-2018	2018-2019
Average Institutional Scholarship Aid Awarded	\$7,067	\$7,718	\$8,229
Number - All students registered in AY receiving institutional scholarship aid	483	602	678
Percent - All students registered in AY receiving institutional scholarship aid	8%	10%	12%
Number - FTIC students registered in AY receiving institutional scholarship aid	76	149	164
Percent - FTIC students registered in AY receiving institutional scholarship aid	9%	19%	20%

Grant Aid	2016-2017	2017-2018	2018-2019
Average Grant Aid Awarded	\$5,265	\$5,411	\$5,455
Number - All students registered in AY receiving grant aid	2,500	2,408	2,370
Percent - All students registered in AY receiving grant aid	37%	42%	42%
Number - FTIC students registered in AY receiving grant aid	469	449	472
Percent - FTIC students registered in AY receiving grant aid	55%	58%	57%

Pell Grants	2016-2017	2017-2018	2018-2019
Average Pell Grant Awarded	\$4,711	\$4,909	\$5,070
Number - All students registered in AY receiving pell grant	2,315	2,189	2,140
Percent - All students registered in AY receiving pell grant	36%	38%	38%
Number - FTIC students registered in AY receiving pell grant	467	437	444
Percent - FTIC students registered in AY receiving pell grant	54%	57%	54%

Federal Loans	2016-2017	2017-2018	2018-2019
Average Federal Loans Awarded	\$10,803	\$10,689	\$11,050
Number - All students registered in AY receiving federal loans	2,743	2,592	2,513
Percent - All students registered in AY receiving federal loans	43%	45%	45%
Number - FTIC students registered in AY receiving federal loans	392	342	360
Percent - FTIC students registered in AY receiving federal loans	46%	44%	44%

Van Ness Campus Map



Van Ness Campus Building Directory

32	Mathematics	44	CAUSES/Life Sciences/ Health Services
38	Career Services/Student Success	46E	Theater of the Arts
38	Bookstore	46W	Performing Arts
38	School of Business and Public Administration	47	Sports Complex
39	Administration/Admissions/Financial Aid/ Registration/Library	52	David A. Clarke School of Law
41	College of Arts & Sciences	56	Student Center
42	School of Engineering and Applied Sciences		



UNIVERSITY^{OF THE}
DISTRICT OF
COLUMBIA
—1851