

UNIVERSITY OF THE
DISTRICT OF
COLUMBIA
1851

UNIVERSITY OF THE
DISTRICT OF
COLUMBIA
1851

INFORMATION



- | | |
|---|--|
| 1. School of Engineering & Applied Sciences / Architecture & Urban Planning / Mathematics | 32. David A. Clark School of Law |
| 2. School of Business & Public Administration / Student Success Center / Bookstore | 33. Student Center / Wellness Center / Ballrooms |
| 3. Administration / Enrollment Services / Library / Campus Police | 34. Parking Garage / Public Entrance |
| 4. College of Arts & Sciences / HIM | 35. Deardorff Plaza |
| 5. School of Engineering & Applied Sciences / Visual Arts / Digital Media | 36. Green Walk |
| 6. CAUSES / Life Sciences / Health Services | 37. Athletic Field |
| 7. Theater of the Arts | 38. Amphitheater |
| 8. Performing Arts | 39. Tennis Courts |
| 9. Sports Complex | 40. Loading Dock |



Factbook

ACADEMIC YEAR 2021-2022



Office of Institutional Research, Assessment and Planning

Website: udc.edu/irap/

Email: ir-info@udc.edu

Maria Byrd

Associate Vice President

Office of Planning and Institutional Effectiveness

Rajeev K. Bansal

Director

Office of Institutional Research, Assessment and Planning

Gashaw Mekonnen

Senior Operations Research Analyst

Olivia Zhang

Research Assessment Analyst

Luis Borbonet

Data Analyst

Contents

Mission and Vision	4
SECTION 1: UNIVERSITY BACKGROUND	
1.1 Board Members for AY 2021-2022	6
1.2 University Leadership	7
1.3 Active Programs Offered by College and School	8
1.4 Accreditation Agencies	12
1.5 Active Workforce Certifications	14
1.6 Number of Degree Programs Offered by Level	15
SECTION 2: APPLICATIONS AND ADMISSIONS	
2.1 Applications, Admissions and Enrollment	18
2.2 First Time in College (FTIC) Student Enrollment	19
2.3 FTIC from DC Feeder Schools	20
2.4 Transfer Student Enrollment	22
2.5 Transfer Student Prior Institution	23
SECTION 3: STUDENT ENROLLMENT PROFILE	
3.1 Enrollment Summary	26
3.2 Enrollment by Classification	28
3.3 Enrollment by Ethnicity	30
3.4 Enrollment by Age	31
3.5 Enrollment by Degree Level	33
3.6 Enrollment by College/School	35
3.7 Enrollment by Degree Program	37
3.8 Enrollment by D.C. Ward	43
3.9 International Student Enrollment	44
3.10 DC-UP Student Information	45
3.11 University Athletes by Sport	46
3.12 Spring Enrollment	47

**SECTION 4: LAND-GRANT PROGRAMS IN THE COLLEGE OF AGRICULTURE,
URBAN SUSTAINABILITY AND ENVIRONMENTAL SCIENCES**

4.1 Overview, Impact and Reach	58
--------------------------------	----

SECTION 5: WORKFORCE DEVELOPMENT AND LIFELONG LEARNING

5.1 Enrollment and Completion by Demographic Characteristics	62
5.2 Enrollment and Completion by Course	64
5.3 WDLL Certifications	66

SECTION 6: STUDENT OUTCOMES: RETENTION, GRADUATION AND COMPLETION RATES

6.1 First Time in College Student Retention Rates	68
6.2 Graduation Rates and Outcome Measures	69
6.2.1 Full-Time First Time in College Graduation Rates	69
6.2.2 Outcome Measures: Four-year, Six-year and Eight-year Rates	70
6.3 Degree Completions/Awards	71

SECTION 7: FACULTY AND STAFF PROFILE

7.1 Employee Summary	78
7.2 Average Salary for Continuing Full-Time Faculty	80

SECTION 8: FINANCES

8.1 Title III	82
8.2 Office of University Research	83
8.3 Financial Aid	85

Mission and Vision

MISSION

Embracing its essence as a public historically black urban-focused land-grant university in the nation's capital, UDC is dedicated to serving the needs of the community of the District of Columbia, and producing lifelong learners who are transformative leaders in the workforce, government, nonprofit sectors and beyond.

VISION

All students will achieve their highest levels of human potential.

SECTION 1

University Background



1.1

Board Members for Academic Year 2021-2022

Christopher D. Bell, J.D. (Chair)

Commissioner Mignon Clyburn (Vice Chair)

Esther Barazzone, Ph.D. (Secretary)

Jerome Shelton (Treasurer)

The Honorable Charlene Drew Jarvis, Ph.D.

Ken Grossinger

Cheyenne Barber **

Ronald Mason, Jr., J.D., (ex-officio)

Mildred Musgrove, Ed.D. *

Carolyn Rudd, Ed.D.

Major General Errol R. Schwartz, U.S. Army (Ret.)

Barrington D. Scott *

Anthony C. Tardd, Ph.D.

Anntoinette White-Richardson *

*Elected Alumni Trustee

**Elected Student Trustee

1.2

University Leadership

EXECUTIVE CABINET

Ronald Mason, Jr., J.D. (President)

Lawrence T. Potter, Jr., Ph.D. (Chief Academic Officer)

David A. Franklin (Chief Operating Officer)

Monique A. Guillory, Ph.D. (Chief of Staff/Senior Vice President)

William U. Latham, Ph.D. (Chief Student Development & Success Officer)

Avis M. Russell, J.D. (General Counsel)

DEANS

April Massey, Ph.D.

College of Arts & Sciences (CAS)

Dwane Jones, Ph.D.

College of Agriculture, Urban Sustainability & Environmental Sciences (CAUSES)

Mohamad Sepehri, Ph.D.

School of Business & Public Administration (SBPA)

Devdas Shetty, Ph.D.

School of Engineering & Applied Sciences (SEAS)

Renée McDonald Hutchins, J.D.

David A. Clarke School of Law (DCSL)

Marilyn A.L. Hamilton, Ph.D.

Community College (CC)

MaShonda Smith, Ph.D.

Workforce Development & Lifelong Learning (WDLL)

1.3

Active Programs Offered by College & School

COLLEGE OF AGRICULTURE, URBAN SUSTAINABILITY AND ENVIRONMENTAL SCIENCES

Academic Program Division

Department of Architecture and Urban Sustainability

- PhD in Urban Leadership and Entrepreneurship
- Architecture and Community Planning (BS)
- Urban Sustainability (BA)
- Architecture and Community Planning (M.Arch)
- Professional Science Masters
 - Urban Agriculture (PSM)
 - Urban Sustainability (PSM)
 - Water Resources Management (PSM)

Department of Health, Nursing and Nutrition

- Health Education (BS)
- Nursing RN to BSN (BSN)
- Nutrition and Dietetics (BS)

Land-grant Centers

Center for Urban Agriculture and Gardening Education

- Master Gardening Certificate
- Urban Agriculture Certificate
- Hydroponic and Aquaponics Technician Certificate
- Hoop House Construction Certificate
- Youth Leadership & Development

Center for Sustainable Development and Resilience

- Entrepreneurship Certificate
- Green Infrastructure Certificate
- Green Building Maintenance Certificate
- Youth Leadership & Development

Center for Nutrition, Diet, and Health

- Supplemental Nutrition Education Assistance Program (SNAP-Ed)
- Extended Food and Nutrition Education Program (EFNEP)
- Food Safety Certificate
- Food Management Certificate
- Youth Leadership & Development

Active Programs Offered by College & School (continued)

COLLEGE OF AGRICULTURE, URBAN SUSTAINABILITY AND ENVIRONMENTAL SCIENCES

Land-grant Program Division, continued

Water Resources Research Institute and Environmental Quality Testing Laboratory

- Water Testing Service
- Soil Testing Services

Institute of Gerontology

- Respite Aid/Bodywise Program
- Senior Companion Program
- Senior Tuition Program

COLLEGE OF ARTS AND SCIENCES

Division of Arts and Humanities

- Art (BA)
- Digital Media (BA)
- English (BA)
- Music (BM)

Division of Sciences and Mathematics

- Biology (BS)
- Chemistry (BS)
- Mathematics (BS)
- Biology (MS)

Division of Education, Health and Social Work

- Early Childhood Education (BA)
- Elementary Education (BA)
- Special Education (BS)
- Social Work (BSW)
- Speech–Language Pathology (MS)
- Counseling: School and Mental Health concentrations (MS)
- Rehabilitation Counseling (MA)
- Early Childhood (MA)
- Teaching (MAT)
- Adult Education (MA)
- Adult Education Graduate Certificate

Division of Social and Behavioral Sciences

- Administration of Justice (BA)
- Human Development (BA)
- Political Science (BA)
- Psychology (BS)
- Homeland Security (MS)

Active Programs Offered by College & School (continued)

SCHOOL OF BUSINESS AND PUBLIC ADMINISTRATION

Accounting and Finance Department

- Accounting (BBA)
- Finance (BBA)

Business Management Department

- Business Management (BBA)
- Concentration in Logistics & International Trade (LIT) Analytics
- Concentration in Marketing
- Concentration in Management Information Systems

Graduate Programs

- Master of Business Administration (MBA)

SCHOOL OF ENGINEERING AND APPLIED SCIENCES

Department of Civil Engineering

- Civil Engineering (BS)
- Civil Engineering (MS)

Department of Computer Science and Information Technology

- Computer Science (BS)
- Computer Science (MS)
- Cybersecurity (BS)
- Information Technology (BS)

Department of Electrical and Computer Engineering

- Computer Engineering (BS)
- Electrical Engineering (BS)
- Electrical Engineering (MS)

Department of Mechanical Engineering

- Biomedical Engineering (BS)
- Mechanical Engineering (BS)
- Mechanical Engineering (MS)

Ph.D in Computer Science and Engineering

Active Programs Offered by College & School (continued)

DAVID A. CLARKE SCHOOL OF LAW

- J.D. Program (Full Time)
- J.D. Program (Part Time)

COMMUNITY COLLEGE

Graphic Design (AA)

Music (AA)

Division of Education

- Education (AA)

Division of Humanities

- Liberal Studies (AA)
- Liberal Studies (AS)

Division of Mathematics, IT and Engineering

- Architectural Engineering Technology (AAS)
- Aviation Maintenance Technology (AAS)
- Aviation Maintenance Technology (Certificate)
- Computer Science Technology (AAS)

Division of Business

- Business Administration (AS)
- Computer Accounting Technology (AAS)
- Fashion Merchandising (AAS)
- Hospitality Management (AS)

Division of Criminology

- Corrections Administration (AAS)
- Legal Assistant (AAS)
- Law Enforcement (AAS)

Division of Nursing, Allied Health, Life and Physical Sciences

- Nursing (AAS)
- Natural Science (AS) Concentration: Chemistry
- Natural Science (AS) Concentration: Biology
- Mortuary Science (AAS)
- Respiratory Therapy (AAS)

1.4

Accreditation Agencies

College/School

COLLEGE OF AGRICULTURE, URBAN SUSTAINABILITY AND ENVIRONMENTAL SCIENCES

- Nutrition and Dietetics
- Architecture
- RN-BSN Nursing

COLLEGE OF ARTS & SCIENCES

- Social Work
- Speech-Language Pathology
- Education

- Chemistry
- Master of Science in Counseling with a concentration in School
- Master of Arts in Rehabilitation Counseling

Accrediting Agencies

Accreditation Council for Education in Nutrition & Dietetics (ACEND)
National Architectural Accrediting Board (NAAB)
Accreditation Commission for Education in Nursing (ACEN)

Council on Social Work Education CSWE
Council on Academic Accreditation in Audiology & Speech-Language Pathology of the American Speech-Language Hearing Association (CAA/ASHA)

Accreditation:

Council for the Accreditation of Educator Preparation (CAEP)

Approvals:

Office of the State Superintendent of Education (OSSE)

MAT – approved concentrations: • Secondary Social Studies
• Secondary English • Elementary • General Science • Secondary Math
• Music • Middle School Science

MA – approved concentration: • Early Childhood

BA – approved concentrations: • Early Childhood Education
• Elementary Education

BS – approved concentrations: • Special Education (Non-Categorical)

Approved concentrations: • Adult Education

Approval:

American Chemical Society (ACS)

Council for Accreditation of Counseling and Related Educational Programs (CACREP)

Council for Accreditation of Counseling and Related Educational Programs (CACREP)

Accreditation Agencies (continued)

College/School

Accrediting Agencies

SCHOOL OF BUSINESS AND PUBLIC ADMINISTRATION

- | | |
|-------------------------------------|---|
| • Accounting | Association of Collegiate Business Schools and Programs (ACBSP) |
| • Business Management | Association of Collegiate Business Schools and Programs (ACBSP) |
| • Marketing | Association of Collegiate Business Schools and Programs (ACBSP) |
| • Management Information Systems | Association of Collegiate Business Schools and Programs (ACBSP) |
| • Master of Business Administration | Association of Collegiate Business Schools and Programs (ACBSP) |

SCHOOL OF ENGINEERING AND APPLIED SCIENCES

- | | |
|--------------------------|--|
| • Biomedical Engineering | Accreditation Board for Engineering and Technology, Inc. (ABET),
Engineering Accreditation Commission (EAC) |
| • Civil Engineering | Accreditation Board for Engineering and Technology, Inc. (ABET),
Engineering Accreditation Commission (EAC) |
| • Electrical Engineering | Accreditation Board for Engineering and Technology, Inc. (ABET),
Engineering Accreditation Commission (EAC) |
| • Mechanical Engineering | Accreditation Board for Engineering and Technology, Inc. (ABET),
Engineering Accreditation Commission (EAC) |
| • Computer Science | Accreditation Board for Engineering and Technology (ABET),
Computing Accreditation Commission (CAC) |

DAVID A. CLARKE SCHOOL OF LAW

- | | |
|----------------|--------------------------|
| • All Programs | American Bar Association |
|----------------|--------------------------|

COMMUNITY COLLEGE

- | | |
|------------------------|--|
| • Aviation Maintenance | Federal Aviation Administration |
| • Mortuary Science | American Board of Funeral Service Education (ABFSE) |
| • Nursing | Accreditation Commission for Education in Nursing (ACEN) |
| • Respiratory Therapy | Commission on Accreditation for Respiratory Care (CoARC) |

1.5

Active Workforce Certifications

Certification	Program Name
AHLEI - Certified Front Desk Representative	Hospitality and Tourism Pathway
AHLEI - Certified Guest Service Professional	Hospitality and Tourism Pathway
AHLEI - Hospitality & Tourism Year 1	Hospitality and Tourism Pathway
AHLEI - Restaurant Server	Hospitality and Tourism Pathway
AWS Cloud Practitioner	Information Technology and Office Administration
CompTIA A+	Information Technology and Office Administration
CompTIA Network+	Information Technology and Office Administration
CompTIA Security+	Information Technology and Office Administration
Council for Professional Recognition Child Development Associate	Early Childhood Education
Direct Support Professional - Certificate of Completion	Healthcare - Direct Care and Healthcare Administration
ESCO Employment Ready & H.E.A.T. Excellence certification (HVAC)	Construction and Property Management
Food Handler - National Restaurant Associations - ServSafe	Hospitality and Tourism Pathway
Microsoft Office Suite Specialist (MOS)	Information Technology and Office Administration
National Apartment Leasing Professional (NALP)	Hospitality and Tourism Pathway
NHA - Certified Electrocardiogram (EKG) Technician	Healthcare - Direct Care and Healthcare Administration
NHA - Certified Electronic Health Records Specialist	Healthcare - Direct Care and Healthcare Administration
NHA – Certified Pharmacy Technician	Healthcare - Direct Care and Healthcare Administration
NHA - Certified Phlebotomy Technician	Healthcare - Direct Care and Healthcare Administration
NHA - Medical Assistant Program	Healthcare - Direct Care and Healthcare Administration
NHA - Medical Billing & Coding Specialist	Healthcare - Direct Care and Healthcare Administration
NHA - Medical Office Administrative Assistant	Healthcare - Direct Care and Healthcare Administration
NNAAP - Nursing Assistant	Healthcare - Direct Care and Healthcare Administration
NSC-CPR	Healthcare - Direct Care and Healthcare Administration
NSC-First Aid	Healthcare - Direct Care and Healthcare Administration
PMI - Certified Associate in Project Management (CAPM)	Information Technology and Office Administration

1.6

Number of Degree Programs Offered by Level

Program Level	No. of Active Programs
Associate	24
Baccalaureate	32
Undergraduate Certificate	5
Graduate Certificate	4
Graduate (including JD, LLM & PhDs)	23
Total	88

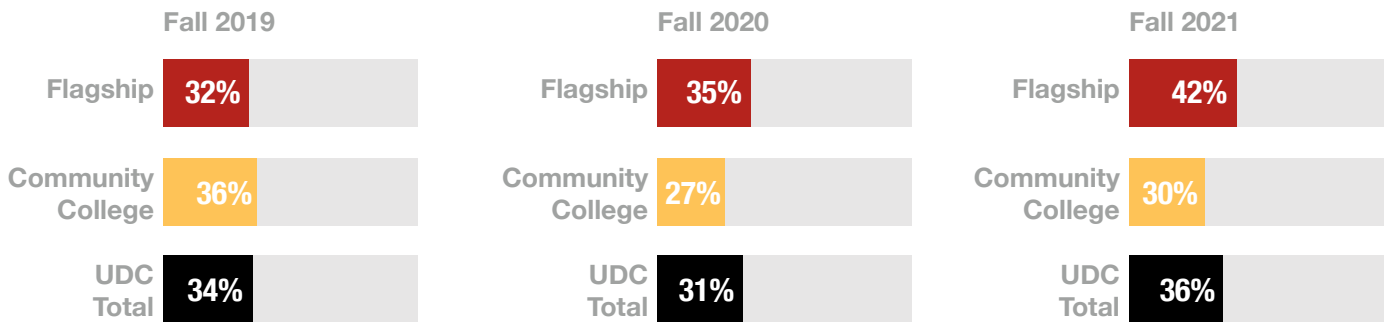
SECTION 2

Applications and Admissions



2.1 Applications, Admissions and Enrollment

Chart 1: Admissions Yield Rate*



*Yield rate = # of students enrolled / # of applicants admitted. All levels of programs are included except Law School.

Table 1: Admissions Summary (Flagship and CC)

Campus		Fall 2019	Fall 2020	Fall 2021
Flagship	Applicants	3,024	2,641	2,268
	Admitted	2,006	1,375	1,115
	Enrolled	635	478	473
	Yield Rate	32%	35%	42%
Community College	Applicants	2,834	2,120	1,842
	Admitted	2,204	1,486	1,211
	Enrolled	790	396	364
	Yield Rate	36%	27%	30%
UDC Total	Applicants	5,858	4,761	4,110
	Admitted	4,210	2,862	2,326
	Enrolled	1,425	874	837
	Yield Rate	34%	31%	36%

2.2

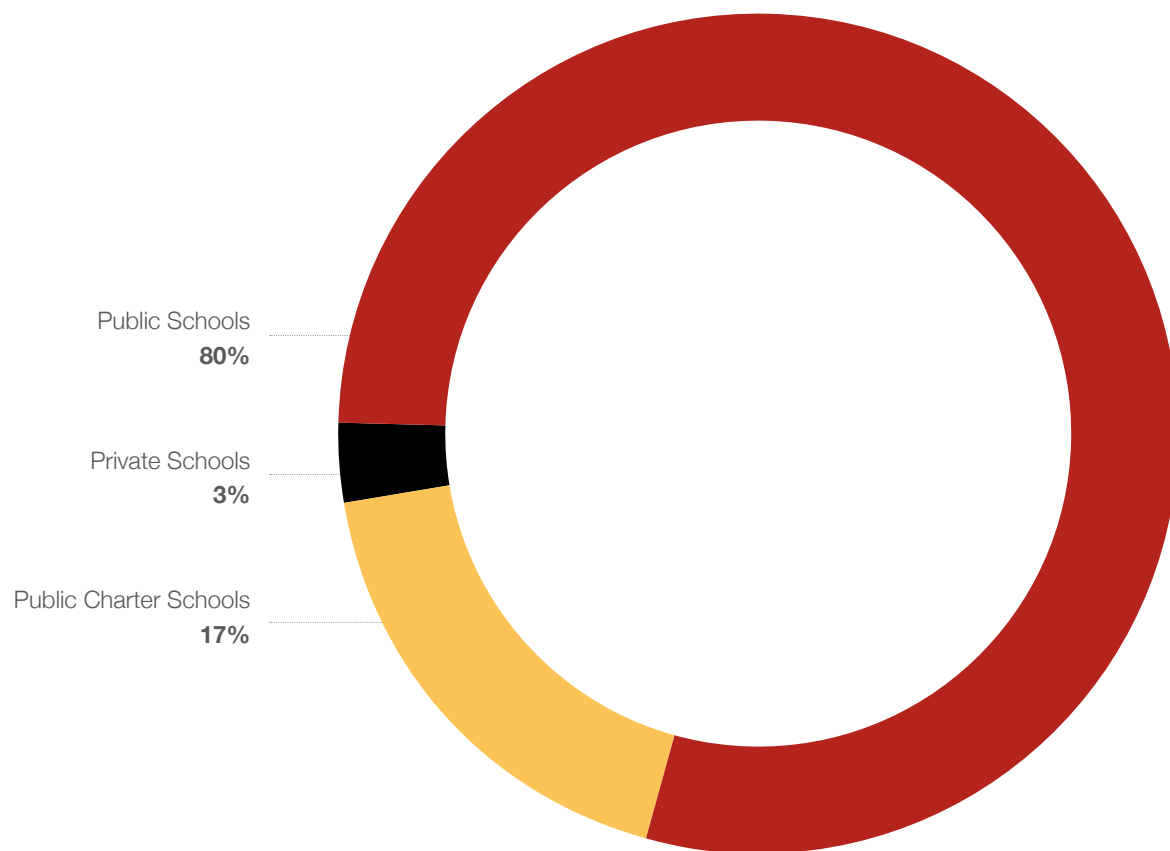
First Time in College (FTIC) Student Enrollment

Table 2: FTIC Enrollment Summary

Characteristics	Fall 2019			Fall 2020			Fall 2021		
	Flagship	UDC-CC	Total	Flagship	UDC-CC	Total	Flagship	UDC-CC	Total
FT/PT									
Full Time	210	135	345	128	100	228	95	83	178
Part Time	15	291	306	16	147	163	21	94	115
Total	225	426	651	144	247	391	116	177	293
Race/Ethnicity:									
American Indian or Alaska Native	0	3	3	0	1	1	0	1	1
Asian	5	4	9	5	4	9	2	3	5
Black or African American	121	281	402	83	176	259	48	85	133
Hispanic	48	87	135	42	49	91	27	41	68
Native Hawaiian or Other Pacific Islander	0	0	0	0	1	1	1	0	1
White	6	11	17	1	3	4	3	4	7
International	27	7	34	1	1	2	11	0	11
Unknown	18	33	51	12	12	24	24	43	67
Total	225	426	651	144	247	391	116	177	293
Gender									
Female	113	242	355	79	135	214	62	110	172
Male	104	159	263	53	86	139	53	66	119
Not Stated	8	25	33	12	26	38	1	1	2
Total	225	426	651	144	247	391	116	177	293
Residency									
Resident	144	310	454	97	149	246	54	91	145
Metro-Area Resident	19	23	42	12	5	17	10	11	21
Non-Resident	62	93	155	35	93	128	52	75	127
Total	225	426	651	144	247	391	116	177	293
Age Group									
< 18	19	22	41	17	18	35	11	9	20
18-19	166	185	351	106	126	232	79	74	153
20-21	25	44	69	11	23	34	17	24	41
22-24	8	36	44	5	17	22	4	16	20
25-29	2	51	53	1	20	21	3	24	27
30-34	3	25	28	2	19	21	1	14	15
35+	1	63	64	2	24	26	1	16	17
Missing	1	0	1	0	0	0	0	0	0
Total	225	426	651	144	247	391	116	177	293

2.3 FTIC from DC Feeder Schools

Figure 1 : Percentage Distribution of FTIC Enrollment by School Type: Fall 2021



FTIC from DC Feeder Schools (continued)

Table 3: FTIC from DC Feeder Schools: Fall 2021

DC High Schools	Community College	Flagship	Total
Public Schools			
Anacostia High School	1	1	2
Ballou Stay High School	1	1	2
Benjamin Banneker Academic High School	1	-	1
Calvin Coolidge High School	7	1	8
Duke Ellington School Of Arts	1	2	3
Eastern Senior High School	10	-	10
Francis L Cardozo High School	1	-	1
Frank W Ballou High School	1	-	1
Howard D Woodson Senior High School	2	1	3
Luke C Moore Academy School	6	2	8
Mckinley Technology High School	4	3	7
Paul Laurence Dunbar High School	5	5	10
Phelps Career Senior High School	1	1	2
Roosevelt Evening High School	4	-	4
Roosevelt High School	8	5	13
Spingarn Senior High School	1	-	1
Spingarn Stay High School	1	-	1
Thurgood Marshall Academy	4	-	4
Washington Metropolitan HS	1	-	1
Sub-total	60	22	82
Public Charter Schools			
Capital City Public Charter School	2	2	4
Cesar Chavez Capitol Hill Public Charter School	-	2	2
Cesar Chavez Public Charter-Parkside	3	4	7
Idea Public Charter School	-	1	1
Maya Angelou Public Charter School	-	1	1
Richard Wright Public Charter School	2	1	3
Subtotal	7	11	18
Private Schools			
Archbishop Carroll High School	1	1	2
Gonzaga College High School	-	1	1
Subtotal	1	2	3
Total	68	35	103

2.4 Transfer Student Enrollment

Table 4: Transfer Enrollment Summary

Characteristics	Fall 2019			Fall 2020			Fall 2021		
	Flagship	UDC-CC	Total	Flagship	UDC-CC	Total	Flagship	UDC-CC	Total
FT/PT									
Full-Time	108	49	157	74	33	107	68	28	96
Part-Time	31	102	133	23	43	66	24	38	62
Total	139	151	290	97	76	173	92	66	158
Ethnicity									
Asian	11	4	15	6	0	6	8	3	11
Black or African American	68	76	144	63	54	117	53	40	93
Hispanic	6	12	18	2	7	9	9	12	21
White	20	10	30	16	8	24	17	5	22
Unknown	34	49	83	10	7	17	5	6	11
Total	139	151	290	97	76	173	92	66	158
Gender									
Female	72	105	177	50	43	93	53	40	93
Male	63	43	106	41	28	69	39	26	65
Unknown	4	3	7	6	5	11	0	0	0
Total	139	151	290	97	76	173	92	66	158
Residency									
Resident	60	86	146	41	34	75	18	21	39
Metro Area	15	8	23	9	4	13	11	2	13
Non-Resident	64	57	121	47	38	85	63	43	106
Total	139	151	290	97	76	173	92	66	158
Age									
<18	-	-	-	-	-	-	1	-	1
18-19	11	19	30	7	7	14	13	7	20
20-21	44	34	78	19	16	35	23	19	42
22-24	42	26	68	21	14	35	26	12	38
25-29	26	28	54	22	16	38	16	15	31
30-34	5	19	24	15	9	24	7	5	12
35+	11	25	36	13	14	27	6	8	14
Total	139	151	290	97	76	173	92	66	158

2.5 Transfer Student Prior Institution

Table 5: Transfer Student Top Six Prior Institution Fall 2021

Prior Institution Name	Flagship	UDC-CC	Total
Woodrow Wilson Senior HS	5	5	10
Bell Multicultural (CHEC) HS	3	3	6
Roosevelt High School	3	3	6
Benjamin Banneker Academic HS	-	3	3
Dematha High School	1	2	3
Duval Senior High School	1	2	3
Mckinley Technology High School	-	3	3
Parkdale High School	1	2	3
Paul Laurence Dunbar HS	3	-	3

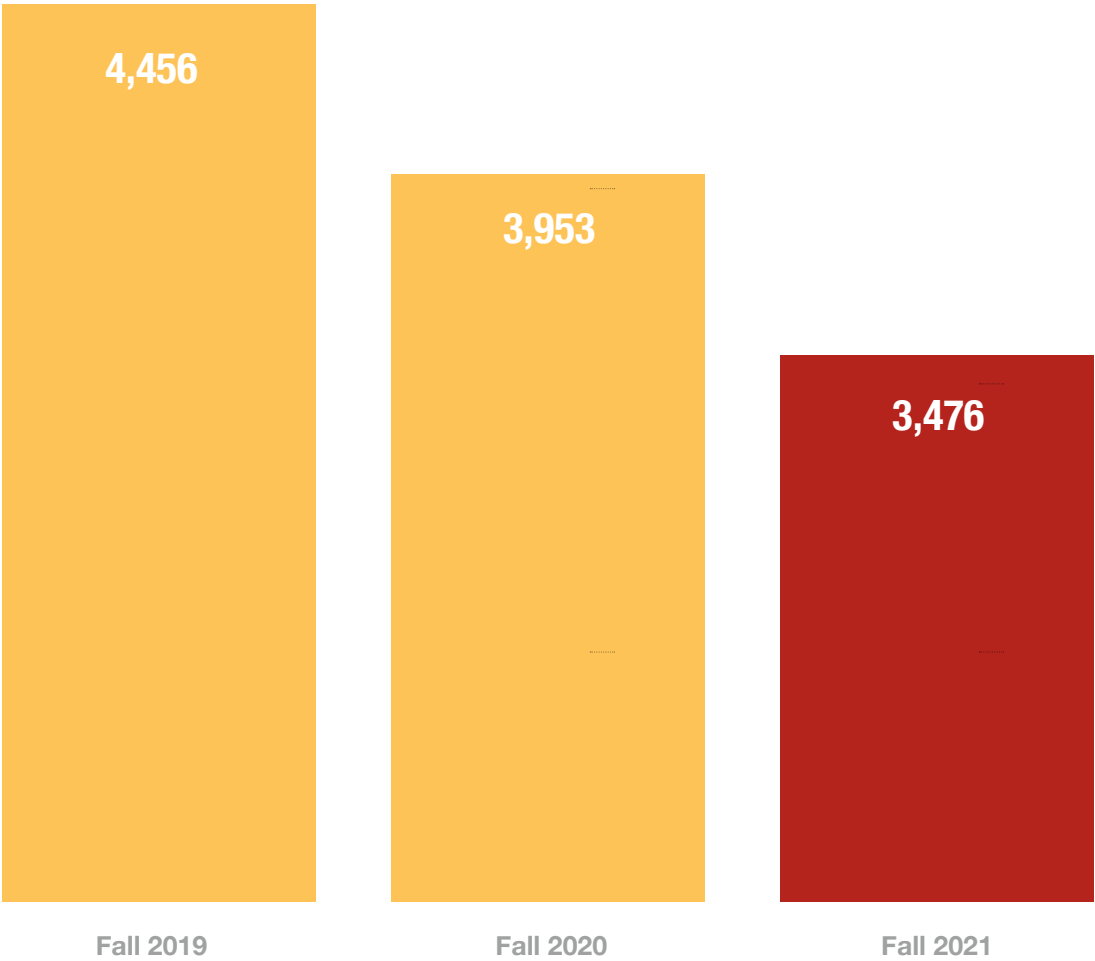
SECTION 3

Student Enrollment Profile



3.1 Enrollment Summary

Chart 2: Enrollment Trend



Enrollment Summary (continued)

Table 6: Enrollment Summary

	Fall Term			Percentage Change
	2019	2020	2021	2020-2021
Head Count	4,456	3,953	3,476	-12%
FTE	3,518.9	3,176.4	2,710.9	-15%
Credit Hours	46,695	42,172	35,589	-16%

Academic Load

Full-Time	Count	2,154	1,946	1,653	-15%
	%	48%	49%	48%	-3%
Part-Time	Count	2,302	2,007	1,823	-9%
	%	52%	51%	52%	3%
Total		4,456	3,953	3,476	-12%

Gender

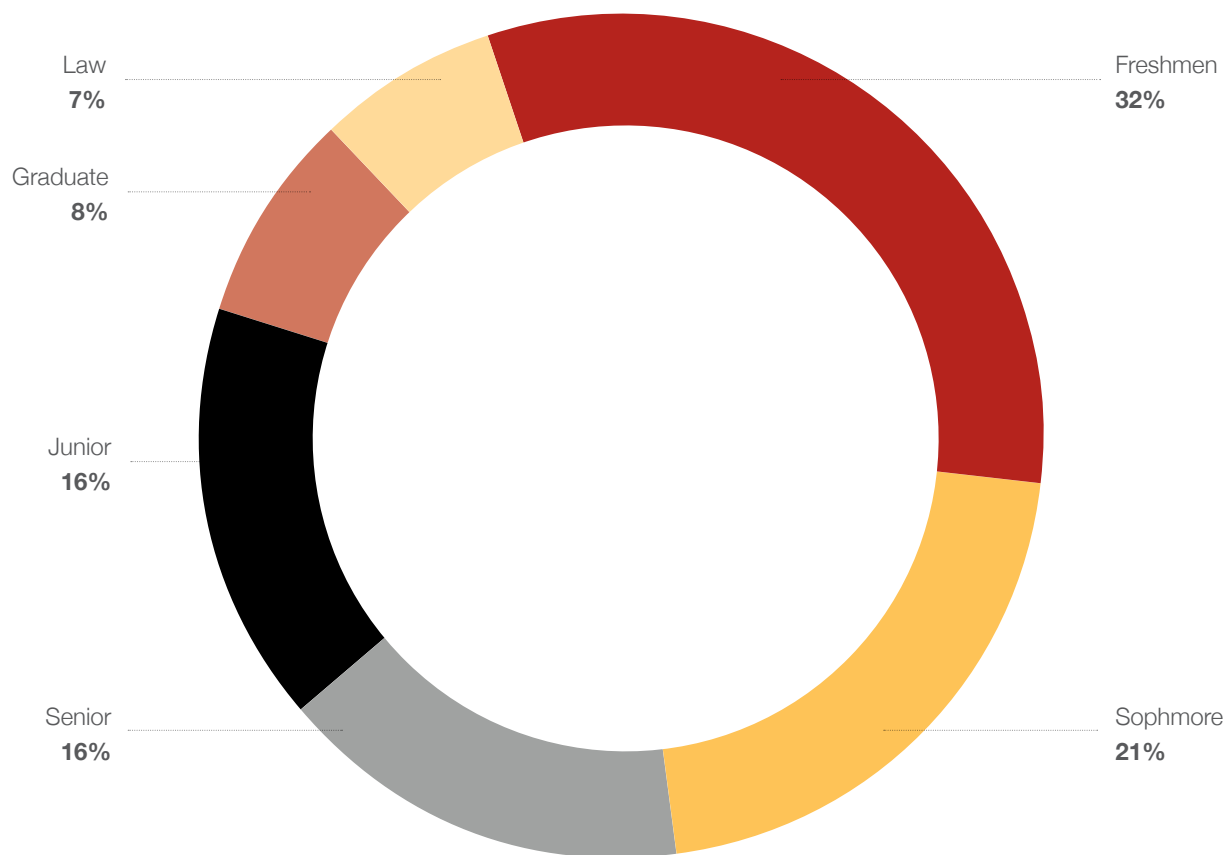
Female	Count	2,583	2,384	2,122	-11%
	%	58%	60%	61%	1%
Male	Count	1,704	1,439	1,264	-12%
	%	38%	36%	36%	0%
Not Stated	Count	169	130	90	-31%
	%	4%	3%	3%	-21%
Total		4,456	3,953	3,476	-12%

Residency

Resident	Count	3,072	2,641	2,158	-18%
	%	69%	67%	62%	-7%
Metro Area	Count	422	408	388	-5%
	%	9%	10%	11%	8%
Non-Resident	Count	962	904	930	3%
	%	22%	23%	27%	17%
Total		4,456	3,953	3,476	-12%

3.2 Enrollment by Classification

Figure 2: Percentage Distribution of Total Enrollment by Class Level: Fall 2021



Enrollment by Classification (continued)

Table 7: Enrollment by Classification

Classification	Location	Fall Terms		
		2019	2020	2021
Freshmen	Flagship	552	408	333
	UDC-CC	1,228	989	761
	Total	1,780	1,397	1,094
Sophomore	Flagship	347	362	278
	UDC-CC	523	475	462
	Total	870	837	740
Junior	Flagship	462	439	441
	UDC-CC	118	112	110
	Total	580	551	551
Senior	Flagship	577	582	551
	UDC-CC	21	18	11
	Total	598	600	562
Graduate		371	340	289
Law School		257	228	240
UDC Total		4,456	3,953	3,476

3.3 Enrollment by Ethnicity

Figure 3: Percentage Distribution of Total Enrollment by Ethnicity: Fall 2020

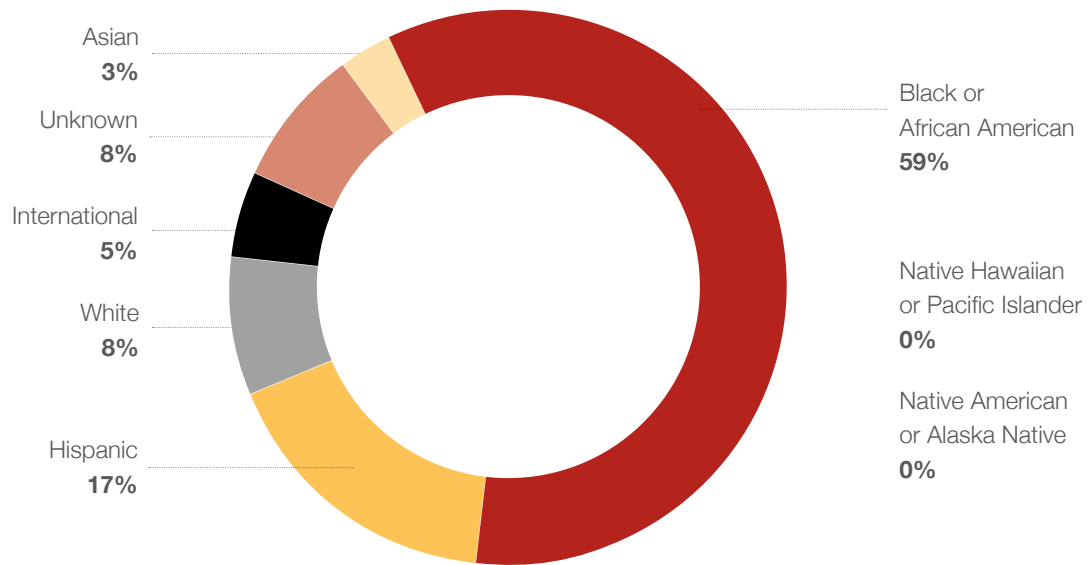


Table 8: Enrollment by Ethnicity

Ethnicity	Fall 2019				Fall 2020				Fall 2021			
	Flagship	UDC-CC	Law	UDC Total	Flagship	UDC-CC	Law	UDC Total	Flagship	UDC-CC	Law	UDC Total
American Indian or Alaska Native	6	6	0	12	8	5	1	14	10	3	1	14
Asian	53	29	28	110	54	19	23	96	47	20	19	86
Black or African American	1,254	1,258	111	2,623	1,209	1,108	101	2,418	1,060	873	111	2,044
Hispanic	309	273	29	611	313	283	31	627	280	268	33	581
Native Hawaiian or Pacific Islander	5	1	0	6	3	1	0	4	5	1	0	6
White	189	60	57	306	177	54	50	281	158	53	59	270
International	292	37	0	329	205	19	0	224	181	9	0	190
Unknown	201	226	32	459	162	105	22	289	151	117	17	285
Total	2,309	1,890	257	4,456	2,131	1,594	228	3,953	1,892	1,344	240	3,476

3.4 Enrollment by Age

Table 9: Enrollment by Age

Age Group	Number of Students by Age Group											
	Fall 2019				Fall 2020				Fall 2021			
	Flagship	UDC-CC	Law	UDC Total	Flagship	UDC-CC	Law	UDC Total	Flagship	UDC-CC	Law	UDC Total
< 18	39	111	0	150	19	19	0	38	50	37	0	87
18-19	312	312	0	624	249	249	0	498	155	149	0	304
20-21	323	270	0	593	326	231	2	559	290	191	4	485
22-24	409	276	40	725	414	249	36	699	389	190	52	631
25-29	459	320	94	873	390	278	82	750	337	231	87	655
30-34	244	188	49	481	261	201	42	504	223	209	37	469
35-39	163	120	32	315	144	120	29	293	131	117	22	270
40-49	166	166	25	357	175	150	25	350	166	135	28	329
50-64	122	111	14	247	114	82	11	207	107	75	7	189
65+	70	15	1	86	38	15	1	54	44	10	1	55
Missing	2	1	2	5	1	0	0	1	0	0	2	2
Total	2,309	1,890	257	4,456	2,131	1,594	228	3,953	1,892	1,344	240	3,476
Average Age	29.3	28.1	31.9	28.9	29.1	28.8	31.7	29.1	29.6	29.5	30.6	29.6

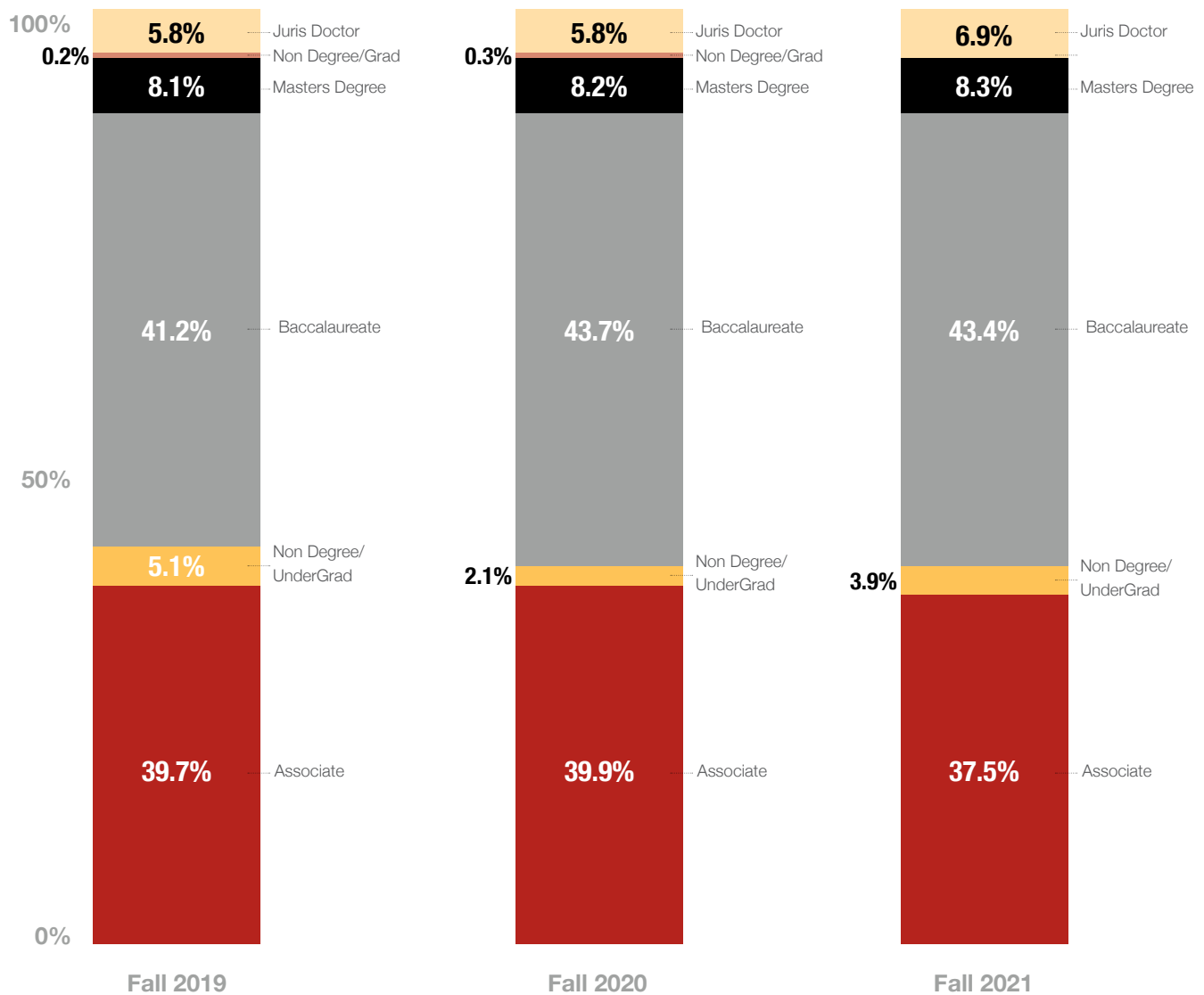
3.5 Enrollment by Degree Level

Table 10: Enrollment by Degree Level

Enrollment	Level	Fall Term			Percent Change 2020-2021
		2019	2020	2021	
Head Count	Associate	1,768	1,576	1,302	-17%
	Non-degree/Undergraduate	226	83	135	63%
	Baccalaureate	1,834	1,726	1,510	-13%
	Non-degree/Graduate	9	12	1	-92%
	Master's Degree	362	328	288	-12%
	Juris Doctor	257	228	240	5%
	Total	4,456	3,953	3,476	-12%
Full-Time Equivalent (FTE)	Associate	1,283.7	1,151.8	919.5	-20%
	Non-degree/Undergraduate	71.6	34.3	44.2	29%
	Baccalaureate	1,622.3	1,506.6	1,289.3	-14%
	Non-degree/Graduate	4.3	4.9	0.9	-82%
	Master's Degree	314.1	282.1	245.6	-13%
	Juris Doctor	223.0	196.8	211.5	7%
	Total	3,518.9	3,176.4	2,710.9	-15%
Credit Hours	Associate	16,048	14,433	11,556	-20%
	Non-degree/Undergraduate	870	421	534	27%
	Baccalaureate	23,147	21,443	17,970	-16%
	Non-degree/Graduate	42	50	8	-84%
	Master's Degree	3,563	3,291	2,717	-17%
	Juris Doctor	3,025	2,534	2,804	11%
	Total	46,695	42,172	35,589	-16%

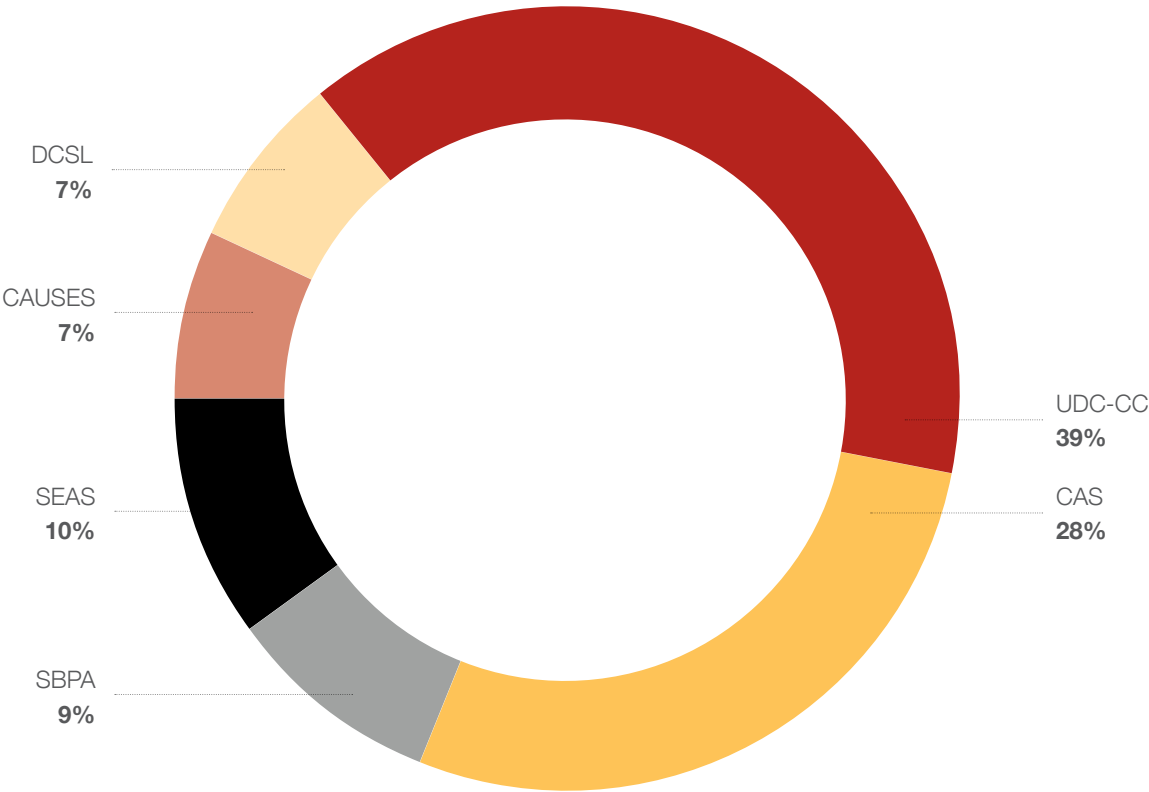
Enrollment by Degree Level (continued)

Chart 2: Percent Distribution of Head Count Enrollment by Degree Level



3.6 Enrollment by College/School

Figure 4: Percentage Distribution of Head Count Enrollment by College, Fall 2021



Enrollment by College/School (continued)

Table 11: Fall Enrollment by College

	Fall Term			Percent Change 2020-2021
	2019	2020	2021	
Enrollment (Head Count) Distribution by College				
Flagship				
College of Agriculture, Urban Sustainability & Environmental Sciences (CAUSES)	287	255	244	-4%
College of Arts & Sciences (CAS)	1151	1071	965	-10%
School of Business & Public Administration (SBPA)	434	411	326	-21%
School of Engineering & Applied Sciences (SEAS)	437	394	357	-9%
Flagship Subtotal	2,309	2,131	1,892	-11%
David A. Clarke School of Law	257	228	240	5%
UDC-Community College	1890	1594	1344	-16%
Total	4,456	3,953	3,476	-12%
Full-Time Equivalent (FTE) Distribution by College				
Flagship				
College of Agriculture, Urban Sustainability & Environmental Sciences (CAUSES)	231.6	212.7	193.9	-9%
College of Arts & Sciences (CAS)	942.4	887.8	770.7	-13%
School of Business & Public Administration (SBPA)	390.9	366.8	283.3	-23%
School of Engineering & Applied Sciences (SEAS)	410.9	350.8	316.5	-10%
David A. Clarke School of Law	223.0	196.8	211.5	7%
UDC-Community College	1,320.3	1,161.6	935.0	-20%
Total	3,518.9	3,176.4	2,710.9	-15%

Note:

UG FTE=FT + (Total Credit Hours taken by PT UG/12)

Grad FTE=FT + (Total Credit Hours taken by PT Grad/9)

LAW FTE=FT + (PT LAW*0.75)

3.7 Enrollment by Degree Program

Table 12: Fall Enrollment by Degree Program

Level	Major	Fall 2019			Fall 2020			Fall 2021		
		FT	PT	Total	FT	PT	Total	FT	PT	Total
College of Agriculture, Urban Sustainability, & Environmental Sciences										
Undergraduate	Architecture (BS)	50	10	60	41	16	57	40	14	54
	Health Education	21	15	36	21	11	32	12	5	17
	Nursing (BS)	0	1	1	0	2	2	1	9	10
	Nutrition and Dietetics (BS)	34	14	48	22	10	32	15	9	24
	Urban Sustainability (BA)	25	7	32	27	11	38	20	14	34
	Undeclared	0	3	3	0	2	2	0	2	2
	None	1	44	45	0	18	18	0	25	25
	Subtotal	131	94	225	111	70	181	88	78	166
Graduate	Architecture (MARC)	18	9	27	17	6	23	13	3	16
	Nutrition and Dietetics (MS)	1	0	1	0	1	1	0	0	0
	Urban Agriculture (Graduate Certificate)	0	0	0	0	1	1	0	1	1
	Urban Agriculture (MS)	2	1	3	7	2	9	10	2	12
	Urban Leadership & Entrepreneurship (PhD)	12	3	15	21	3	24	22	11	33
	Urban Sustainability (PSM)	5	0	5	5	2	7	3	3	6
	Water Resource Management	6	5	11	6	3	9	4	6	10
	Subtotal	44	18	62	56	18	74	52	26	78
	School Total	175	112	287	167	88	255	140	104	244
	%	61%	39%	100%	65%	35%	100%	57%	43%	100%

Enrollment by Degree/Program (continued)

Table 12: Fall Enrollment by Degree Program (continued)

		Fall 2019			Fall 2020			Fall 2021		
Level	Major	FT	PT	Total	FT	PT	Total	FT	PT	Total
College of Arts & Sciences										
Undergraduate	Administration of Justice (BA)	46	28	74	48	21	69	39	27	66
	Art (BA)	47	13	60	42	17	59	42	22	64
	Biology (BS)	108	39	147	100	45	145	76	32	108
	Chemistry (BS)	13	8	21	11	6	17	11	5	16
	Digital Video & Film Production (Certificate)	0	1	1	0	1	1	0	2	2
	Digital Media	36	6	42	32	10	42	31	7	38
	Early Childhood Education	20	30	50	28	36	64	23	27	50
	Elementary Education (BA)	13	9	22	16	4	20	12	9	21
	English (BA)	31	13	44	23	12	35	16	14	30
	Human Development	18	62	80	25	45	70	22	41	63
	Mass Media Art	0	0	0	0	0	0	0	0	0
	Mathematics	15	4	19	16	3	19	9	7	16
	Music (BM)	21	15	36	16	8	24	13	14	27
	Political Science	68	39	107	59	47	106	45	36	81
	Psychology	49	34	83	66	36	102	65	41	106
	Social Work	47	35	82	40	25	65	35	27	62
	Special Education	13	6	19	14	5	19	9	8	17
	Undeclared	4	0	4	2	0	2	0	0	0
	None	2	57	59	3	43	46	1	65	66
	Subtotal	551	399	950	541	364	905	449	384	833

Enrollment by Degree/Program (continued)

Table 12: Fall Enrollment by Degree Program (continued)

Level	Major	Fall 2019			Fall 2020			Fall 2021		
		FT	PT	Total	FT	PT	Total	FT	PT	Total
College of Arts & Sciences										
Graduate	Adult Education	0	10	10	1	7	8	0	4	4
	Adult Education (Certificate)	0	11	11	0	5	5	0	10	10
	Biology (Graduate)	0	0	0	1	0	1	5	0	5
	Cancer Biology, Prevent - Control	6	0	6	5	0	5	3	0	3
	Clinical Rehabilitation	3	0	3	0	0	0	0	0	0
	Counseling	21	7	28	11	5	16	14	6	20
	Early Childhood Education (MA)	6	0	6	10	1	11	6	2	8
	Homeland Security (MS)	10	20	30	7	19	26	7	14	21
	Mental Health	2	0	2	0	0	0	0	0	0
	Rehabilitation Counseling	27	8	35	17	10	27	14	7	21
	Speech/Language Pathology	32	1	33	29	2	31	28	0	28
	Teaching	23	6	29	18	7	25	9	2	11
	None	1	7	8	1	10	11	0	1	1
	Subtotal	131	70	201	100	66	166	86	46	132
	School Total	682	469	1,151	641	430	1,071	535	430	965
	%	59%	41%	100%	60%	40%	100%	55%	45%	100%

Enrollment by Degree/Program (continued)

Table 12: Fall Enrollment by Degree Program (continued)

Level	Major	Fall 2019			Fall 2020			Fall 2021		
		FT	PT	Total	FT	PT	Total	FT	PT	Total
School of Business & Public Administration										
Undergraduate	Accounting	52	33	85	53	23	76	36	21	57
	Business Management	201	55	256	193	66	259	145	61	206
	Entrepreneurship (Certificate)	1	0	1	0	0	0	0	0	0
	Finance	21	2	23	25	2	27	28	4	32
	Hospitality - Tourism Management	0	0	0	0	0	0	2	3	5
	Non-Profit Leadership (Certificate)	0	0	0	0	1	1	0	0	0
	Procurement - Public Contracting	0	1	1	0	1	1	0	0	0
	Procurement - Public Contracting (Certificate)	0	0	0	0	0	0	0	1	1
	Subtotal	275	91	366	271	93	364	211	90	301
Graduate	Business Administration (MBA)	31	5	36	23	3	26	16	7	23
	Nonprofit Management (Graduate Certificate)	2	2	4	0	0	0	0	0	0
	Public Administration (MPA)	21	6	27	15	5	20	1	1	2
	None	1	0	1	0	1	1	0	0	0
	Subtotal	55	13	68	38	9	47	17	8	25
	School Total	330	104	434	309	102	411	228	98	326
	%	76%	24%	100%	75%	25%	100%	70%	30%	100%

Enrollment by Degree/Program (continued)

Table 12: Fall Enrollment by Degree Program (continued)

		Fall 2019			Fall 2020			Fall 2021		
Level	Major	FT	PT	Total	FT	PT	Total	FT	PT	Total
School of Engineering & Applied Sciences										
Undergraduate	Biomedical Engineering	20	2	22	16	2	18	16	1	17
	Civil Engineering (BS)	53	8	61	34	13	47	28	7	35
	Computer Engineering							2	0	2
	Computer Science	115	17	132	98	11	109	68	29	97
	Electrical Engineering	38	10	48	28	12	40	25	13	38
	Information Technology	53	9	62	44	12	56	35	13	48
	Mechanical Engineering (BS)	65	7	72	49	21	70	53	11	64
	None	0	0	0	0	1	1	0	2	2
	Subtotal	344	53	397	269	72	341	227	76	303
Graduate	Civil Engineering (MS)	5	2	7	5	4	9	7	2	9
	Computer Science & Engineering (PhD)	4	7	11	8	6	14	13	8	21
	Computer Science (MS)	7	6	13	11	4	15	12	3	15
	Electrical Engineering (MS)	4	1	5	3	2	5	1		1
	Mechanical Engineering (MS)	4	0	4	8	2	10	7	1	8
	Subtotal	24	16	40	35	18	53	40	14	54
	School Total	368	69	437	304	90	394	267	90	357
%		84%	16%	100%	77%	23%	100%	75%	25%	100%

Level	Major	Fall 2019			Fall 2020			Fall 2021		
		FT	PT	Total	FT	PT	Total	FT	PT	Total
David A. Clarke School of Law										
	Law Juris Doctor (JD)	121	136	257	103	125	228	126	114	240
	%	47%	53%	100%	45%	55%	100%	53%	48%	100%

Enrollment by Degree/Program (continued)

Table 12: Fall Enrollment by Degree Program (continued)

Level	Major	Fall 2018			Fall 2019			Fall 2020		
		FT	PT	Total	FT	PT	Total	FT	PT	Total
Community College										
Undergraduate	Admin Office Management (AAS)	4	7	11	1	4	5	0	0	0
	Architectural Engineering Technology	15	11	26	15	14	29	8	18	26
	Aviation Maintenance Technology (AAS)	15	30	45	1	7	8	18	5	23
	Business Administration (AS)	22	34	56	47	84	131	69	76	145
	Business Technology (AAS)	46	89	135	10	33	43	0	2	2
	Computer Accounting Technology (AAS)	7	19	26	8	14	22	7	14	21
	Computer Science Technology	60	75	135	54	69	123	36	49	85
	Construction Management	6	7	13	2	6	8	0	4	4
	Corrections Administration	0	16	16	3	14	17	7	13	20
	Education (AA)	35	249	284	38	260	298	23	228	251
	Fashion Merchandising	9	29	38	12	21	33	10	6	16
	Graphic Design (AA)	24	57	81	26	45	71	12	34	46
	Hospitality Management - Tourism	11	26	37	10	23	33	0	2	2
	Hospitality Management - Tourism (AS)	0	0	0	0	0	0	6	12	18
	Law Enforcement	39	125	164	35	104	139	23	73	96
	Legal Assistant (AAS)	7	20	27	1	13	14	11	14	25
	Liberal Studies (AA)	66	164	230	57	108	165	34	86	120
	Liberal Studies (AS)	92	263	355	60	136	196	22	40	62
	Mortuary Science	4	15	19	6	23	29	11	29	40
	Music (AA)	8	14	22	17	9	26	4	10	14
	Natural Science	0	0	0	0	0	0	2	4	6
	Nursing (AAS)	1	1	2	15	128	143	49	197	246
	Respiratory Therapy	5	37	42	1	38	39	2	28	30
	Undeclared	1	3	4	0	4	4	0	3	3
	None	1	121	122	3	15	18	3	40	43
	College Total	478	1,412	1,890	422	1,172	1,594	357	987	1,344
	%	25%	75%	100%	26%	74%	100%	27%	73%	100%
	University Total	2,154	2,302	4,456	1,946	2,007	3,953	1,653	1,823	3,476
	%	48%	52%	100%	49%	51%	100%	48%	52%	100%

3.8

Enrollment by D.C. Ward

Table 13: Student Enrollment by D.C. Ward*

DC Ward	Fall 2019				Fall 2020				Fall 2021			
	Flagship	UDC-CC	Law	UDC Total	Flagship	UDC-CC	Law	UDC Total	Flagship	UDC-CC	Law	UDC Total
Ward 1	183	185	15	383	179	146	11	336	159	132	13	304
Ward 2	42	34	4	80	34	28	5	67	26	29	4	59
Ward 3	214	47	36	297	201	48	19	268	194	44	14	252
Ward 4	377	407	17	801	369	373	13	755	317	283	13	613
Ward 5	218	224	7	449	205	170	5	380	198	153	9	360
Ward 6	124	107	12	243	118	98	10	226	92	79	7	178
Ward 7	344	536	7	887	324	415	9	748	274	356	8	638
Ward 8	108	143	3	254	107	139		246	83	92	3	178
Total DC	1610	1683	101	3,394	1537	1417	72	3,026	1,343	1,168	71	2,582
Out-of-DC	699	207	156	1,062	594	177	156	927	549	176	169	894
Total	2309	1890	257	4,456	2,131	1,594	228	3,953	1,892	1,344	240	3,476

* Student Enrollment by D.C. Ward is based on student address (zip code), not on student tuition classification.

3.9 International Student Enrollment

Table 14: International Student Enrollment by Visa Type

Visa	Fall 2019			Fall 2020			Fall 2021		
	Flagship	UDC-CC	UDC Total	Flagship	UDC-CC	UDC Total	Flagship	UDC-CC	UDC Total
Asylum	1	0	1	0	0	0	1	1	2
Business	2	2	4	21	0	21	0	0	0
Diplomat	10	4	14	8	3	11	4	2	6
Exchange Visa	6	3	9	0	4	4	0	0	0
Int'l Organization	2	1	3	0	0	0	1	1	2
Refugee	0	0	0	0	0	0		0	0
Student Visa (F-1)	226	18	244	166	10	176	169	2	171
Other	91	16	107	40	7	47	6	3	9
Total	338	44	382	235	24	259	181	9	190

Table 15: International Student Enrollment by Country of Origin (Top 10)

Country	Fall 2019			Country	Fall 2020			Country	Fall 2021		
	UDC-CC	Flagship	UDC Total		UDC-CC	Flagship	UDC Total		UDC-CC	Flagship	UDC Total
Saudi Arabia	0	71	71	Jamaica	0	60	60	Jamaica	0	8	8
Jamaica	0	65	65	Saudi Arabia	0	18	18	Canada	0	4	4
Nigeria	0	10	10	Nigeria	2	12	14	Brazil	0	2	2
Cote d'Ivoire	0	7	7	Brazil	2	7	9	Spain	0	2	2
Bangladesh	0	6	6	Egypt	0	6	6	Bangladesh	0	1	1
Gabon	1	5	6	South Africa	4	1	5	Belarus	0	1	1
Angola	0	5	5	Turkey	0	5	5	Belgium	0	1	1
Brazil	2	3	5	Cameroon	0	4	4	France	0	1	1
Canada	0	5	5	Gabon	1	3	4	Germany	0	1	1
Turkey	2	3	5	Qatar	0	4	4	India	0	1	1

3.10

DC-UP Student Information

Table 16: DC-UP Students by High School

High School	Count
Archbishop Carroll High School	1
Bell Multicultural High School	2
Calvin Coolidge High School	1
Cesar Chavez Public Charter-Parkside	2
Duke Ellington School Of Arts	2
Eastern Senior High School	1
Jackson-Reed High School (formerly Wilson HS)	4
Jamaica (HS)	11
Joseph A Gregori HS	1
Largo Senior High School	1
Life Center Academy	1
Luke C Moore Acad SHS	1
McKinley Technology High School	3
Paul International HS-Paul PCS	2
Paul Laurence Dunbar High School	3
R B Stall High School	1
Richard Wright PCHS	1
Ron Brown High School	1
Roosevelt High School	6
San Leandro High School	1
South Mountain High School	1
Titchfield High School	1
Waukesha West High School	1
Total	49

3.11

University Athletes by Sport

Table 17: NCAA Division II (w/o football)

Team	Men	Women	Total
Basketball	10	10	20
Soccer	26	N/A	26
Tennis	6	7	13
Cross Country/Track & Field	N/A	19	19
Lacrosse	27	15	42
Total	69	51	120

3.12 Spring Enrollment

Table 18: Spring Enrollment Summary

	Spring Term			Percentage Change
	2020	2021	2022	2020-2021
Head Count	4,157	3,661	3,206	-12%
FTE	3,242.9	2,863.8	2,483.0	-13%
Credit Hours	43,328	38,163	32,744.5	-14%

Academic Load

Full-Time	Count	1,982	1,732	1,496	-14%
	%	48%	47%	47%	-1%
Part-Time	Count	2,175	1,929	1,710	-11%
	%	52%	53%	53%	1%
Total		4,157	3,661	3,206	-12%

Gender

Female	Count	2,438	2,250	1,970	-12%
	%	59%	61%	61%	0%
Male	Count	1,525	1,305	1,159	-11%
	%	37%	36%	36%	1%
Not Stated	Count	194	106	77	-27%
	%	5%	3%	2%	-17%
Total		4,157	3,661	3,206	-12%

Residency

Resident	Count	2,927	2,491	2,103	-16%
	%	70%	68%	66%	-4%
Metro Area	Count	403	404	373	-8%
	%	10%	11%	12%	5%
Non-Resident	Count	827	766	730	-5%
	%	20%	21%	23%	9%
Total		4,157	3,661	3,206	-12%

Spring Enrollment (continued)

Table 19: Spring Enrollment by Degree Level

Enrollment	Level	Spring Term			Percent Change 2021-2022
		2020	2021	2022	
Head Count	Associate	1,655	1,404	1,169	-17%
	Non-degree/Undergraduate	227	150	163	9%
	Baccalaureate	1,725	1,598	1,400	-12%
	Non-degree/Graduate	9	13	2	-85%
	Graduate	318	291	250	-14%
	Juris Doctor	223	205	222	8%
	Total	4,157	3,661	3,206	-12%
Full-Time Equivalent (FTE)	Associate	1166.4	988.0	830.4	-16%
	Non-degree/Undergraduate	70.9	46.0	49.1	7%
	Baccalaureate	1,527.6	1,400.9	1,193.7	-15%
	Non-degree/Graduate	3.0	5.2	0.8	-85%
	Graduate	279.4	246.2	212.8	-14%
	Juris Doctor	195.5	177.5	196.3	11%
	Total	3,242.9	2,863.8	2,483.0	-13%
Credit Hours	Associate	14,583	12,377	10,417	-16%
	Non-degree/Undergraduate	862	552	593	7%
	Baccalaureate	21,954	19,873	16,763.5	-16%
	Non-degree/Graduate	27	47	7	-85%
	Graduate	3,275	2,895	2,334	-19%
	Juris Doctor	2,627	2,419	2,630	9%
	Total	43,328	38,163	32,744.5	-14%

Spring Enrollment (continued)

Table 20: Spring Enrollment by College

	Spring Term			Percent Change 2021-2022
	Spring 2020	Spring 2021	Spring 2022	
Enrollment (Head Count) Distribution by College				
Flagship				
College of Agriculture, Urban Sustainability & Environmental Sciences (CAUSES)	257	244	230	-6%
College of Arts & Sciences (CAS)	1,028	1,039	886	-15%
School of Business & Public Administration (SBPA)	425	351	290	-17%
School of Engineering & Applied Sciences (SEAS)	423	374	339	-9%
Flagship Subtotal	2,133	2,008	1,745	-13%
David A. Clarke School of Law	223	205	222	8%
UDC-Community College	1,801	1,448	1,239	-14%
Total	4,157	3,661	3,206	-12%
Full-Time Equivalent (FTE) Distribution by College				
Flagship				
College of Agriculture, Urban Sustainability & Environmental Sciences (CAUSES)	204.9	198.5	185.5	-7%
College of Arts & Sciences (CAS)	855.2	829.6	693.7	-16%
School of Business & Public Administration (SBPA)	384.6	310.5	254.0	-18%
School of Engineering & Applied Sciences (SEAS)	390.8	345.3	302.8	-12%
David A. Clarke School of Law	195.5	177.5	196.3	11%
UDC Community College	1211.9	1002.5	850.8	-15%
Total	3242.9	2863.8	2483.0	-13%

Note:

UG FTE=FT + (Total Credit Hours taken by PT UG/12)

Grad FTE=FT + (Total Credit Hours taken by PT Grad/9)

LAW FTE=FT + (PT LAW*0.75)

Spring Enrollment (continued)

Table 21: Spring Student Enrollment by Program

		Spring 2020			Spring 2021			Spring 2022		
Level	Major	FT	PT	Total	FT	PT	Total	FT	PT	Total
College of Agriculture, Urban Sustainability & Environmental Sciences										
Undergraduate	Architecture (BS)	36	21	57	36	17	53	33	18	51
	Health Education	19	16	35	14	14	28	9	5	14
	Nursing (BS)	0	2	2	4	3	7	8	4	12
	Nutrition and Dietetics (BS)	26	11	37	16	18	34	16	11	27
	Urban Sustainability	28	7	35	25	7	32	24	8	32
	Undeclared	0	3	3	0	2	2	0	1	1
	None	1	30	31	0	20	20	0	26	26
	Subtotal	110	90	200	95	81	176	90	73	163
Graduate	Architecture (MARC)	16	8	24	15	8	23	6	8	14
	Nutrition and Dietetics (MS)	1	0	1	0	0	0	0	0	0
	Urban Agriculture Graduate Certificate	0	0	0	0	1	1	0	0	0
	Urban Agriculture (MS)	2	1	3	6	2	8	10	2	12
	Urban Leadership and Entrepreneurship	11	1	12	18	6	24	21	9	30
	Urban Sustainability (PSM)	5	3	8	2	2	4	4	0	4
	Water Resource Management	4	5	9	5	3	8	2	5	7
	Subtotal	39	18	57	46	22	68	43	24	67
	School Total	149	108	257	141	103	244	133	97	230

Spring Enrollment (continued)

Table 21: Spring Student Enrollment by Program (continued)

		Spring 2020			Spring 2021			Spring 2022		
Level	Major	FT	PT	Total	FT	PT	Total	FT	PT	Total
College of Arts & Sciences										
Undergraduate	Administration of Justice (BA)	45	25	70	47	30	77	32	33	65
	Art (BA)	46	13	59	37	19	56	34	26	60
	Biology (BS)	92	37	129	89	31	120	65	32	97
	Chemistry (BS)	9	6	15	9	6	15	11	3	14
	Digital Video & Film Production (Certificate)	0	1	1	0	1	1	0	2	2
	Digital Media	33	9	42	28	9	37	20	15	35
	Early Childhood Education (BA)	17	35	52	29	30	59	14	23	37
	Elementary Education (BA)	12	6	18	11	10	21	10	6	16
	English (BA)	26	15	41	21	15	36	9	15	24
	Human Development	43	32	75	28	40	68	33	27	60
	Mathematics	15	2	17	11	6	17	12	6	18
	Music (BM)	19	9	28	13	10	23	8	11	19
	Political Science	58	35	93	48	44	92	43	35	78
	Psychology	45	33	78	54	39	93	53	48	101
	Social Work	39	31	70	42	23	65	34	30	64
	Special Education	10	7	17	13	8	21	10	6	16
	Undeclared	1	1	2	0	0	0	0	0	0
	None	1	50	51	0	84	84	1	65	66
	Subtotal	511	347	858	480	405	885	389	383	772

Spring Enrollment (continued)

Table 21: Spring Student Enrollment by Program (continued)

Level	Major	Spring 2020			Spring 2021			Spring 2022		
		FT	PT	Total	FT	PT	Total	FT	PT	Total
College of Arts & Sciences										
Graduate	Adult Education	1	7	8	0	9	9	0	5	5
	Adult Education (Certificate)	0	6	6	0	6	6	0	7	7
	Biology	0	0	0	0	0	0	5	0	5
	Cancer Biology, Prevent - Control	6	0	6	4	1	5	2	1	3
	Clinical Rehabilitation	3	0	3	0	0	0	0	0	0
	Counseling	18	5	23	7	6	13	11	6	17
	Early Childhood Education (MA)	7	1	8	11	0	11	4	0	4
	Homeland Security (MS)	9	13	22	9	16	25	9	12	21
	Mental Health	2	0	2	0	0	0	0	0	0
	Rehabilitation Counseling	22	6	28	15	7	22	10	6	16
	Speech/Language Pathology	30	0	30	28	1	29	27	0	27
	Teaching	21	5	26	18	5	23	6	1	7
	None	0	8	8	0	11	11	0	2	2
	Subtotal	119	51	170	92	62	154	74	40	114
	School Total		630	398	1028	572	467	1039	463	423

Spring Enrollment (continued)

Table 21: Spring Student Enrollment by Program (continued)

		Spring 2020			Spring 2021			Spring 2022		
Level	Major	FT	PT	Total	FT	PT	Total	FT	PT	Total
School of Business & Public Administration										
Undergraduate	Accounting	56	22	78	45	23	68	33	20	53
	Business Management	198	56	254	164	55	219	130	50	180
	Finance	24	6	30	27	1	28	22	5	27
	Hospitality - Tourism Management	0	0	0	0	0	0	2	4	6
	Procurement - Public Contracting	0	1	1	0	1	1	0	1	1
	Procurement - Public Contracting (Certificate)	0	1	1	0	0	0	0	0	0
	Subtotal	278	86	364	236	80	316	187	80	267
Graduate	Business Administration (MBA)	25	6	31	12	8	20	17	5	22
	Nonprofit Management (Graduate Certificate)	1	1	2	0	0	0	0	0	0
	Public Administration (MPA)	22	5	27	8	5	13	0	1	1
	None	0	1	1	0	2	2	0	0	0
	Subtotal	48	13	61	20	15	35	17	6	23
School Total		326	99	425	256	95	351	204	86	290

Spring Enrollment (continued)

Table 21: Spring Student Enrollment by Program (continued)

		Spring 2020			Spring 2021			Spring 2022		
Level	Major	FT	PT	Total	FT	PT	Total	FT	PT	Total
School of Engineering & Applied Sciences										
Undergraduate	Biomedical Engineering	13	5	18	16	2	18	13	5	18
	Civil Engineering (BS)	52	13	65	39	12	51	28	6	34
	Computer Engineering	0	0	0	0	0	0	1	1	2
	Computer Science (BS)	96	20	116	83	15	98	74	16	90
	Cybersecurity	0	0	0	0	0	0	2	0	2
	Electrical Engineering (BS)	36	11	47	27	9	36	29	6	35
	Information Technology	45	14	59	42	15	57	26	16	42
	Mechanical Engineering (BS)	67	11	78	51	14	65	55	12	67
	None	0	1	1	0	2	2	0	1	1
	Subtotal	309	75	384	258	69	327	228	63	291
Graduate	Civil Engineering (MS)	4	3	7	6	1	7	4	2	6
	Computer Science & Engineering (PhD)	6	4	10	9	7	16	12	13	25
	Computer Science (MS)	10	3	13	9	1	10	8	1	9
	Electrical Engineering (MS)	2	1	3	2	2	4	0	0	0
	Mechanical Engineering (MS)	4	2	6	9	1	10	8		8
	Subtotal	26	13	39	35	12	47	32	16	48
School Total		335	88	423	293	81	374	260	79	339

		Spring 2020			Spring 2021			Spring 2022		
Level	Major	FT	PT	Total	FT	PT	Total	FT	PT	Total
David A. Clarke School of Law										
	Law Juris Doctor (JD)	113	110	223	95	110	205	119	103	222

Spring Enrollment (continued)

Table 21: Spring Student Enrollment by Program (continued)

Level	Major	Spring 2020			Spring 2021			Spring 2022		
		FT	PT	Total	FT	PT	Total	FT	PT	Total
Community College										
Undergrad	Admin Office Management (AAS)	1	2	3	0	1	1	0	0	0
	Architectural Engineering Technology	9	15	24	17	11	28	5	19	24
	Aviation Maintenance Tech (AAS)	12	30	42	3	7	10	24	3	27
	Business Administration (AS)	41	70	111	57	72	129	52	72	124
	Business Technology (AAS)	14	48	62	8	19	27	0	0	0
	Computer Accounting Technology (AAS)	6	10	16	8	15	23	5	12	17
	Computer Science Technology	38	74	112	47	56	103	32	44	76
	Construction Management	1	7	8		4	4	0	3	3
	Corrections Administration	1	17	18	5	12	17	3	7	10
	Education (AA)	42	288	330	37	246	283	33	210	243
	Fashion Merchandising	12	19	31	8	16	24	2	12	14
	Graphic Design (AA)	25	51	76	17	42	59	12	31	43
	Hospitality-Tourism Management (AS)	13	24	37	8	21	29	4	11	15
	Law Enforcement	27	136	163	25	91	116	17	71	88
	Legal Assistant (AAS)	7	15	22	3	14	17	12	7	19
	Liberal Studies (AA)	76	138	214	38	94	132	22	61	83
	Liberal Studies (AS)	85	220	305	26	100	126	15	41	56
	Mortuary Science	6	17	23	8	29	37	14	18	32
	Music (AA)	9	13	22	9	10	19	4	7	11
	Natural Science	0	0	0	0	0	0	5	5	10
	Nursing (AAS)	0	3	3	42	141	183	52	192	244
	Respiratory Therapy	1	31	32	5	30	35	2	27	29
	Undeclared	0	0	0	2	0	2	0	0	0
	None	3	144	147	2	42	44	2	69	71
	College Total	429	1,372	1,801	375	1,073	1,448	317	922	1,239
	Overall UDC	1,982	2,175	4,157	1,732	1,929	3,661	1,496	1,710	3,206

SECTION 4

Land-grant Programs in the College of Agriculture, Urban Sustainability and Environmental Sciences

4.1

Overview, Impact and Reach

COLLEGE OF AGRICULTURE, URBAN SUSTAINABILITY, AND ENVIRONMENTAL SCIENCES (CAUSES) LAND-GRANT PROGRAMS

With the passage of the Morrill Act in 1862, the United States government began providing federal support to establish a national system of land-grant colleges and universities that would focus on agriculture and mechanical arts (engineering and other mechanical fields of expertise). Since then, land-grant universities have expanded their breadth to become leaders in teaching, research, and Cooperative Extension in multiple areas of interests relevant to communities they serve. Land-grant institutions are located in every U.S. state and many territories. The University of the District of Columbia is the land-grant university in and for the nation's capital. The land-grant university functions are located within the College of Agriculture, Urban Sustainability, and Environmental Sciences (CAUSES).

UDC's land-grant programs are primarily offered through four Centers of Excellence & two Institutes. 4-H and Youth Development is distributed across all Centers.

- Center for Urban Agriculture & Gardening Education
- Center for Sustainable Development & Resilience, with the Water Resources Research Institute
- Center for Nutrition, Diet, and Health, with an Institute of Gerontology
- Center for Urban Research, Engagement, and Scholarship

Funding Sources for CAUSES Land-Grant Programs

CAUSES receives funding from the National Institute for Food and Agriculture (NIFA) of the United States Department of Agriculture (USDA) to support research and community outreach programs that pursue several objectives:

- Combat childhood obesity and other food-related illness
- Improve food security
- Improve food safety
- Mitigate climate change
- Develop sustainable energy solutions
- Improve water safety and water management

CAUSES also receives funding from a range of additional public and private sources through grants and research expenditures.

Overview, Impact and Reach (continued)

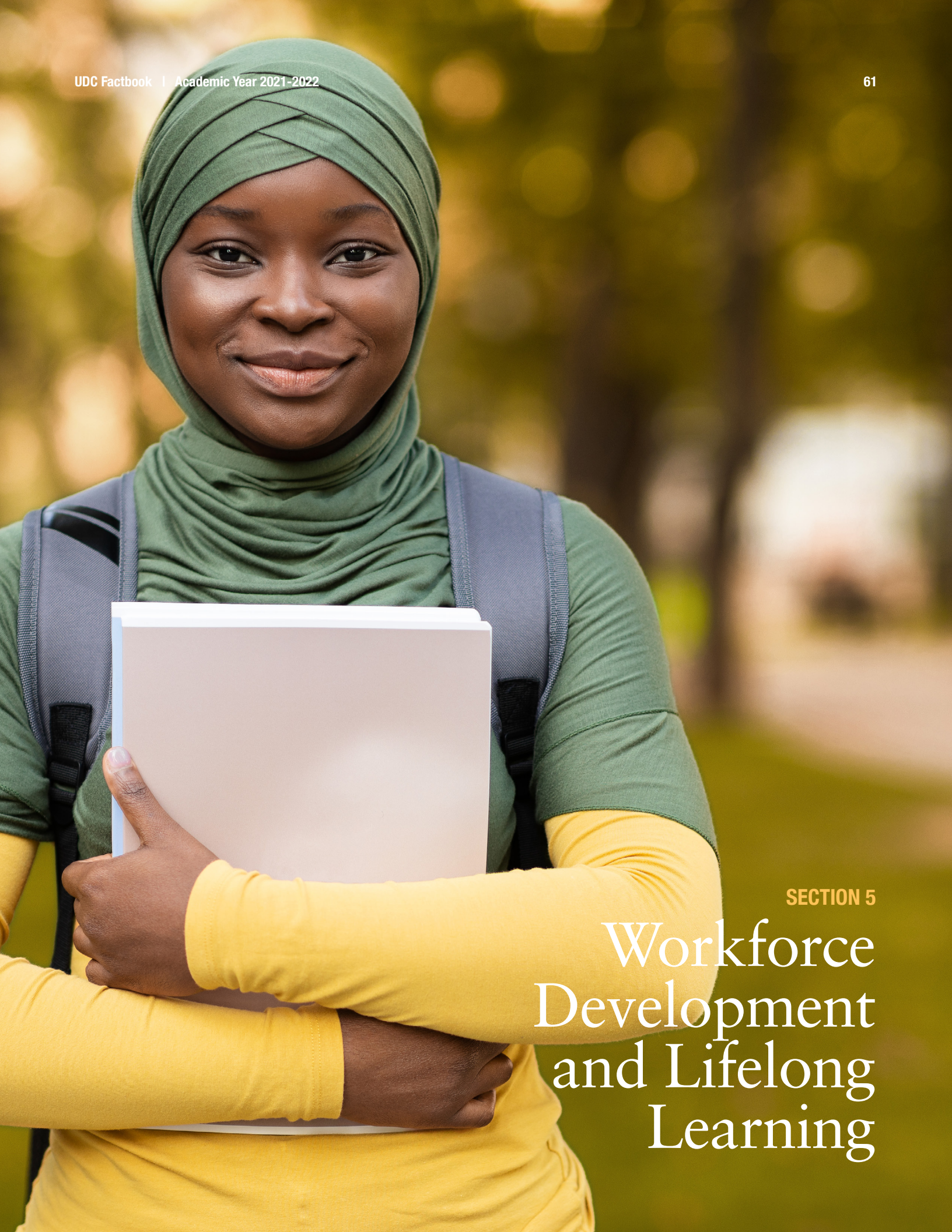
Impact and Reach

Cooperative Extension (“Extension”) connects the community. The capacity-funded Cooperative Extension System, based at land-grant institutions, provides a high-volume of knowledge, training, and informal education to agricultural professionals and local communities. Extension advice and educational content are in high demand. This year, UDC documented over 40,000 direct contacts with residents of the District of Columbia and other communities.

Direct contact occurs through multiple formats aimed at building capacity in the District. These formats include workshops and demonstrations, direct program enrollment, volunteerism, and certifications. Programs are offered in all eight Wards of the District of Columbia and individuals may participate in multiple formats and/or may participate in a course more than once.

The following data provides an overview of the impact of land-grant programs in the District of Columbia.

Direct Adult and Youth Contacts	30,660
Workshops and Demonstrations Held	6,082
Enrollments	3,581
Community Volunteers	830
Certifications Issued	66



SECTION 5

Workforce Development and Lifelong Learning

5.1

Enrollment and Completion by Demographic Characteristics

Table 22: Workforce Development Student Body Counts and Completion AY 2021-2022

	Enrolled		Completed*	
	Number	Percentage	Number	Percentage
Total	742		586	
Age				
19 or less	16	2%	11	2%
20 - 29	280	38%	212	36%
30 - 39	237	32%	193	33%
40 - 49	125	17%	100	17%
50+	80	11%	66	11%
Unknown	4	1%	4	1%
<i>Average age</i>	35		35	
Gender				
Female	503	68%	402	69%
Male	224	30%	174	30%
Unknown/Other	15	2%	10	2%
Race/Ethnicity				
Asian	11	1%	8	1%
Black or African American	452	61%	348	59%
Hispanic	7	1%	5	1%
More than One Race	0	0%	0	0%
Native American / Alaskan Native	2	<1%	2	<1%
Pacific Islander	2	<1%	1	<1%
Unknown	257	35%	212	36%
White	6	1%	6	1%
Other	5	1%	4	1%

Enrollment and Completion by Demographic Characteristics (continued)

Table 22: Workforce Development Student Body Counts and Completion AY 2020-2021 (continued)

	Enrolled		Completed*	
	Number	Percentage	Number	Percentage
State				
DC	715	96%	567	97%
MD	20	3%	15	3%
VA	1	<1%	1	<1%
Unknown	6	1%	3	1%
Education Level				
College	45	6%	28	5%
High School	92	12%	66	11%
GED	14	2%	7	1%
Unreported	591	80%	485	83%
Site By Academic Year**				
Backus	15	2%	13	2%
Congress Heights	228	31%	175	30%
Virtual Learning	285	38%	217	37%
Unreported	375	51%	295	50%

* Number of unduplicated students successfully completing at least one course during the academic year.

** Students counted once per site. Students may be enrolled in courses at multiple sites during the same term.

5.2

Enrollment and Completion by Course

Table 23: Enrollment by Course AY 2021-2022

Course Name	Enrolled	Completed
Advanced Medical Billing	12	11
Apartment Maintenance	3	0
AWS Cloud Computing	30	28
AWS SysOps	3	2
Carpentry 1B	4	4
Carpentry IA	5	4
CAST - UDC Intensive	44	37
CAST + Pepco Training	44	32
Child Dev. Assoc.-Intensive	6	3
Child Development Assoc. I	45	36
Child Development Assoc. II	33	23
Computer Science I Lab	1	1
Computer Science I C++	1	1
Computer Tech - Network +	24	22
Computer Technician-Security+	51	36
Con Core NCCER + Apt Maintenance	4	4
Con Core + HVAC 1A NCCER	9	5
Con. Craft Skills/App w/OSHA10	9	7
CSM	60	55
Dialysis Technician	2	2
EKG Technician	6	6
Electrical 1A	10	4
Electronic Health Records	8	7
Entrepreneurship 101	10	9
Food Handler	6	3
Hospitality - Food & Beverage	8	7
Hospitality and Tourism	19	18
HVAC	7	6

Enrollment and Completion by Course (continued)

Table 24: Enrollment by Course AY 2021-2022 (continued)

Course Name	Enrolled	Completed
HVAC 1B NCCER	2	2
HVAC Installation	13	13
HVAC1A	3	3
Intro Information Technology	53	45
Intro Medical Billing Coding	27	26
Introduction to Python	20	15
IT Fund. Computer Tech A+	82	62
IT Fundamentals	12	7
Language Arts Fundamental	23	10
Leasing for Property Management	51	42
Math Fund. & Applications	103	64
Medical Assistant	9	9
Medical Office Admin Prof.	57	50
Micro-Entrepreneurship 101	11	4
Nursing Asst-Theory/Lab/Practice	12	12
Operating Systems	1	0
Patient Care Technician	1	1
Pharmacy Technician	20	15
Phlebotomy Technician	28	25
Project Management	71	50
Refrigeration. Tech/EPA 608 Universal.	15	15
Total	1,078	843

* Note: Duplicates exist because students may enroll in multiple courses.

5.3

WDLL Certifications

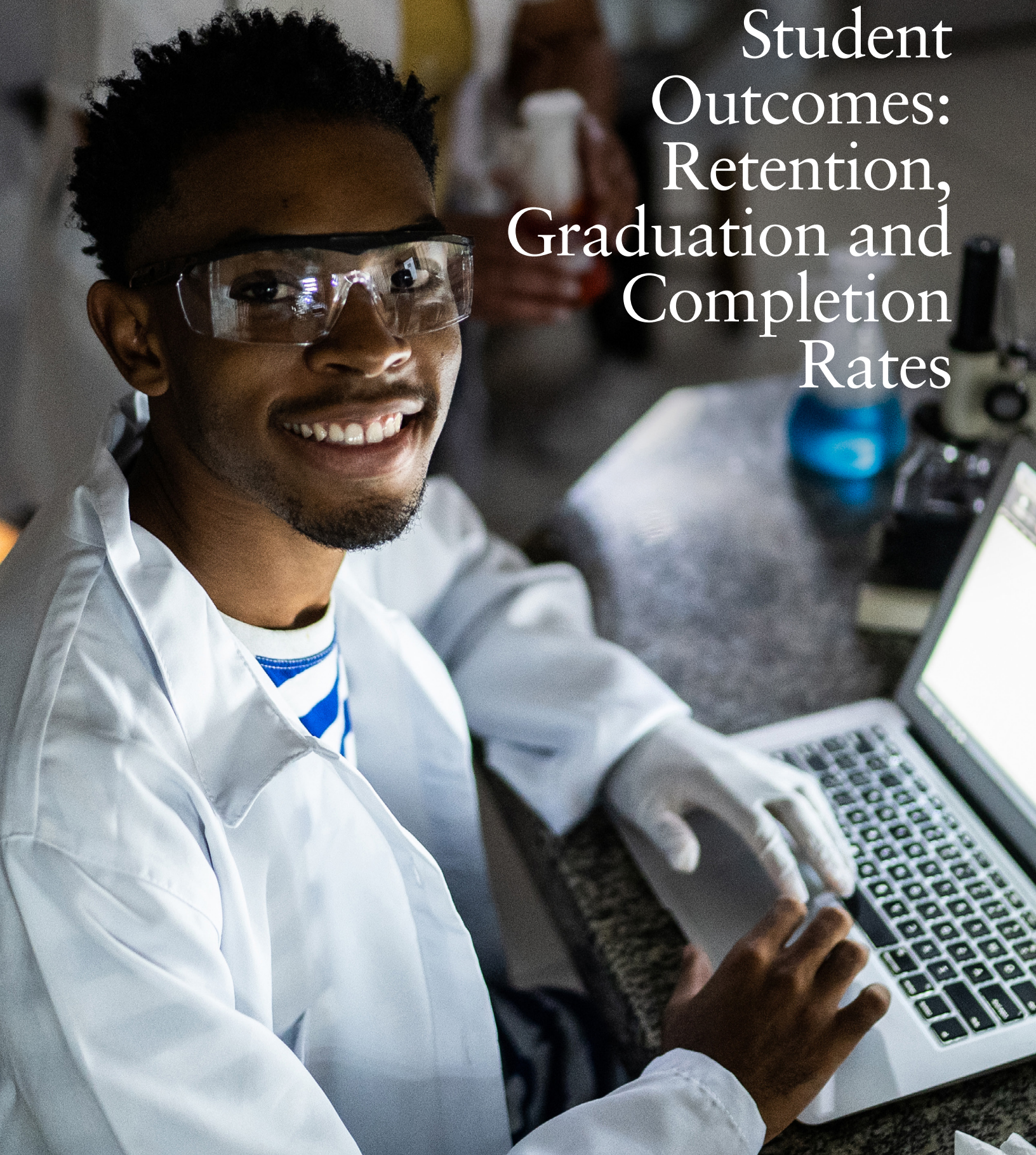
Table 24: Workforce Development Certification Received AY 2021-2022

Certification	Count
AHLEI Cert Guest Serv Pro	1
AHLEI Restaurant Server	8
CAP-PMI	10
Cert Pat Care Tech/Asst	3
CET-Certified EKG Technician	6
Clinical Medical Asst	6
CompTIA A+ Core 1	17
CompTIA Security+	3
CPT-Certified Pharmacy Technician	3
CPT - Certified Phlebotomy Technician	14
ESCO- EPA Section 608 ACR	9
ESCO-Gas H.E.A.T.	7
ESCO-H.E.A.T. Core	7
Gas H.E.A.T. Performance	7
Med Billing & Coding Spec	14
Med Off Adm Asst	23
Natl Apt Leasing Prof	9
NCCER Core Curriculum	11
Network Plus Cert	3
ServSafe Alcohol	8
ServSafe Food Manager	7
Total	176

Note: Some certifying agencies do not report results to WDLL.

SECTION 6

Student Outcomes: Retention, Graduation and Completion Rates



6.1

First Time in College Student Retention Rates

Table 25: FTIC Retention Rate

	Cohort of Fall 2019			Cohort of Fall 2020			Cohort of Fall 2021		
	Cohort Size	Returned Next Fall	Retention Rate	Cohort Size	Returned Next Fall	Retention Rate	Cohort Size	Returned Next Fall	Retention Rate
FT/PT									
Full-Time	345	227	66%	228	111	49%	178	104	58%
Part-Time	306	152	50%	163	62	38%	115	58	50%
Total	651	379	58%	391	173	44%	293	162	55%
Gender									
Female	355	214	60%	214	96	45%	172	94	55%
Male	263	146	56%	139	62	45%	119	67	56%
Not Stated	33	19	58%	38	15	39%	2	1	50%
Total	651	379	58%	391	173	44%	293	162	55%
Ethnicity									
American Indian or Alaska Native	3	1	33%	1	1	100%	1	0	0%
Asian	9	5	56%	9	6	67%	5	5	100%
Black or African American	402	221	55%	259	104	40%	133	67	50%
Hispanic	135	84	62%	91	47	52%	68	46	68%
Native Hawaiian or Pacific Islander	0	0	na	1	0	0%	1	0	0%
White	17	9	53%	4	1	25%	7	5	71%
International	34	26	76%	2	0	0%	11	9	82%
Not Stated	51	33	65%	24	14	58%	67	30	45%
Total	651	379	58%	391	173	44%	293	162	55%
Degree Objective									
Baccalaureate	225	156	69%	144	73	51%	116	55	47%
Associates	426	223	52%	247	100	40%	177	107	60%
Total	651	379	58%	391	173	44%	293	162	55%
College									
CAUSES	15	10	67%	8	6	75%	5	1	20%
CAS	110	67	61%	81	40	49%	62	27	44%
SBPA	47	35	74%	26	11	42%	27	14	52%
SEAS	53	44	83%	29	16	55%	22	13	59%
CC	426	223	52%	247	100	40%	177	107	60%
Total	651	379	58%	391	173	44%	293	162	55%

6.2 Graduation Rates & Outcome Measures

6.2.1 Full-Time First Time in College Graduation Rates

Table 26: First Time Full-Time Six-Year Graduation Rate for Baccalaureate Level*

	2013	2014	2015
Graduation Rate for Bachelor's Cohort	24%	42%	44%
Total Number of Bachelor's Degree Completers Within 150% of Normal Time	25	39	45
Total Number of Students in the Adjusted Cohort	103	92	103

Table 27: First Time Full-Time Three-Year Graduation Rate for Associate Level*

	2013	2014	2015
Graduation Rate for Associate's Cohort	4%	6%	9%
Total Number of Associate's Degree Completers Within 150% of Normal Time	6	6	10
Total Number of Students in the Adjusted Cohort	138	105	117

Table 28: Overall Graduation Rate*

	2013	2014	2015
Graduation Rate for all Cohort Students	13%	23%	25%
Total Number of Completers Within 150% of Normal Time	31	45	55
Total Number of Students in the Adjusted Cohort	241	197	220

* Based on the published definition on the Department of Education Integrated Postsecondary Education Data System (IPEDS), the university graduation rate (GR) is defined as follows: Graduation rate is percentage of full-time, first-time, degree/certificate-seeking undergraduate students in a particular year (cohort) finishing their degree within 150 percent of normal time to completion starting from the cohort year. For Bachelor's degree, it is six years graduation rate. For Associate's degree, it is three years graduation rate.

6.2.2 Outcome Measures: Four-Year, Six-Year and Eight-Year Rates

Table 29: Full Year Student Cohort: 2013-2014

Cohort	4-Year Award Rate	6-Year Award Rate	8-Year Award Rate	Still Enrolled at UDC After 8-Years	Did Not Receive An Award and Subsequently Enrolled at Another Institution
Full-Time, First Time	11%	18%	20%	2%	22%
Part-Time, First Time	6%	12%	13%	3%	19%
Full-Time, Non-First Time	39%	44%	47%	0%	22%
Part-Time, Non-First Time	16%	20%	23%	1%	26%

6.3

Degree Completions/Awards

Table 30: Degree Conferred by College and Level

College/School	Level of Award	2019 - 2020	2020 - 2021	2021 - 2022
College of Agriculture, Urban Sustainability & Environmental Sciences (CAUSES)	Baccalaureate	44	37	43
	Masters	16	14	13
	Total	60	51	56
College of Arts & Science (CAS)	Baccalaureate	150	170	171
	Masters	102	73	43
	Graduate Certificate	0	0	1
	Total	252	243	215
School of Business & Public Administration (SBPA)	Baccalaureate	84	90	87
	Masters	36	28	11
	Total	120	118	98
School of Engineering & Applied Sciences (SEAS)	Baccalaureate	100	81	77
	Masters	6	15	11
	Total	106	96	88
David A. Clarke School of Law	Juris Doctor	78	48	63
	Total	78	48	63
UDC-Community College	Associate	223	205	200
	Undergraduate Certificate	0	0	8
	Total	223	205	208
University Total	Associate	223	205	200
	Undergraduate Certificate	0	0	8
	Baccalaureate	378	378	378
	Masters	160	130	78
	Graduate Certificate	0	0	1
	Juris Doctor	78	48	63
	Total	839	761	728

Degree Completions/Awards (continued)

Table 31: Degree Conferred by College, Level, and Major

		2019 - 2020	2020 - 2021	2021 - 2022
College of Agriculture, Urban Sustainability, & Environmental Sciences				
BA	Urban Sustainability	10	6	10
BS	Architecture	16	8	13
	Environmental Science	0	0	0
	Health Education	8	11	6
	Nutrition and Food Science	10	12	10
	Nursing	0	0	4
	Subtotal	44	37	43
MS	Nutrition and Dietetics	0	1	0
	Urban Agriculture	0	3	2
	Architecture	10	7	5
	Subtotal	10	11	7
PSM	Water Resource Management	5	2	4
	Urban Sustainability	1	1	2
	Subtotal	16	14	13
Total		60	51	56
School of Business & Public Administration				
BBA	Accounting	24	28	19
	Business Management	56	52	46
	Finance	4	10	20
	Marketing	0	0	0
	Procurement & Public Contracting	0	0	0
	Hospitality - Tourism Management	0	0	2
	Subtotal	84	90	87
MBA	Master of Business Administration	20	12	9
	Subtotal	20	12	9
MPA	Master of Public Administration	16	16	2
	Subtotal	36	28	11
Total		120	118	98

Degree Completions/Awards (continued)

Table 31: Degree Conferred by College, Level, and Major (continued)

		2019 - 2020	2020 - 2021	2021 - 2022
School of Engineering & Applied Sciences				
BS	Biomedical Engineering	4	4	1
	Computer Science	26	26	31
	Civil Engineering	22	17	15
	Electrical Engineering	16	5	3
	Information Technology	19	9	14
	Mechanical Engineering	13	20	13
	Subtotal	100	81	77
MS	Civil Engineering	1	3	2
	Computer Science	3	7	5
	Electrical Engineering	2	2	1
	Mechanical Engineering	0	3	3
	Subtotal	6	15	11
Total		106	96	88
David A. Clarke School of Law				
	Juris Doctor	78	48	63
Total		78	48	63

Degree Completions/Awards (continued)

Table 31: Degree Conferred by College, Level, and Major (continued)

		2019 - 2020	2020 - 2021	2021 - 2022
College of Arts & Sciences				
BA	Administration of Justice	18	26	12
	Art	4	14	12
	Digital Media	5	5	6
	Early Childhood Education	3	2	9
	Elementary Education	6	2	3
	English	10	5	10
	Human Development	29	20	16
	Mass Media Art		0	0
	Political Science	28	38	30
	Subtotal	103	112	98
BM	Music	2	6	7
	Subtotal	2	6	7
BS	Biology	11	19	30
	Chemistry	3	1	3
	Mathematics	2	6	2
	Psychology	13	9	15
	Special Education	1	0	4
	Subtotal	30	35	54
BSW	Social Work	15	17	12
	Subtotal	15	17	12
Graduate Certificate	Adult Education	0	0	1
MA	Adult Education	2	8	1
	Early Childhood Education	14	11	4
	English Composition - Rhetoric	0	1	0
	Rehabilitation Counseling	19	12	11
	Subtotal	35	32	16
MAT	Teaching	31	10	7
	Subtotal	31	10	7
MS	Cancer Biology, Prevention & Control	3	3	2
	Counseling	6	2	0
	Homeland Security	9	13	4
	Speech/Language Pathology	18	13	14
	Subtotal	36	31	20
Total		252	243	215

Degree Completions/Awards (continued)

Table 31: Degree Conferred by College, Level, and Major (continued)

		2019 - 2020	2020 - 2021	2021 - 2022
Community College				
AA	Education	45	31	38
	Graphic Design	10	12	5
	Liberal Studies	14	26	12
	Music	0	1	3
	Subtotal	69	70	58
AAS	Architectural Engineering Technology	4	2	2
	Aviation Maintenance Technology	3	1	2
	Administration of Office Management	1	0	0
	Business Technology	12	1	0
	Computer Accounting Technology	3	2	2
	Computer Science Technology	12	29	17
	Construction Management	0	0	1
	Corrections Administration	6	4	3
	Fashion Merchandising	2	6	3
	Graphic Communications Technology	0	0	0
	Hospitality Management & Tourism	5	7	0
	Law Enforcement	25	11	12
	Legal Assistant	9	2	6
	Mortuary Science	3	6	5
	Nursing	24	12	32
	Respiratory Therapy	3	7	8
	Subtotal	112	90	93
AS	Business Administration	21	15	33
	Hospitality-Tourism Management	0	0	3
	Liberal Studies	21	30	13
	Subtotal	42	45	49
Certificate	Aviation Maintenance Technology	0	0	8
Total		223	205	208
UDC Total		839	761	728

SECTION 7

Faculty and Staff Profile



7.1 Employee Summary

Figure 6: UDC Employee Summary

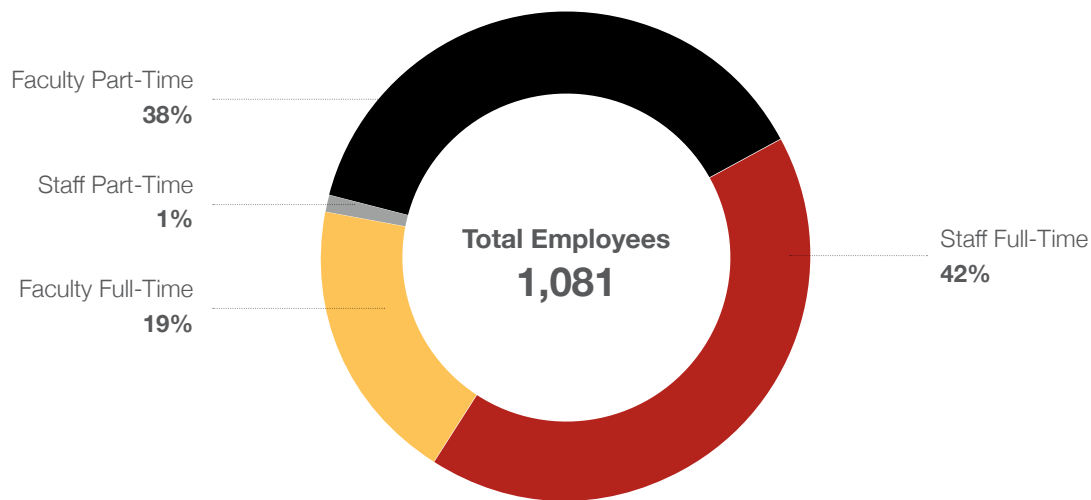


Table 32: UDC Employees by Type (Fall 2021)

Employee Type	Count	Percentage
Faculty Full-Time	202	19%
Staff Full-Time	451	42%
Faculty Part-Time	414	38%
Staff Part-Time	14	1%
Total	1,081	100%

Table 33: UDC Employees by Gender (Fall 2021)

Employee Type	Staff	Faculty	Total
Gender			
Female	298	257	555
Male	167	265	432
Total	465	522	987

Employee Summary (continued)

Table 35: UDC Faculty by Status (Fall 2021)

Faculty Status	Fall 2021
Continuing Full-Time Faculty	
Distinguished Professor	1
Professor	42
Associate Professor	75
Assistant Professor	78
Instructor	6
Subtotal	202
Visiting Faculty	9
Adjunct Faculty	405
Total	616

Table 36: Continuing Full-Time Faculty by College & School (Fall 2021)

Faculty Status	Fall 2021
Flagship (W/o Law School)	
College of Arts and Sciences	85
School of Business & Public Administration	20
School of Engineering & Applied Sciences	28
College of Agriculture, Urban Sustainability & Environmental Sciences	9
Learning Resources	8
Subtotal	150
Community College	26
David A. Clarke School of Law	26
University Total	202

7.2

Average Salary for Continuing Full-Time Faculty

Table 37: Average Salary for Continuing Full-Time Faculty by Academic Rank (Fall 2021)

Academic Rank	Fall 2020		
	Flagship (\$)	UDC-CC (\$)	UDC (\$)
Professor	108,715	N/A	108,715
Associate Professor	90,926	84,828	87,877
Assistant Professor	75,575	71,838	73,707
Instructor	69,061	61,153	64,210
All Ranks	86,069	72,606	83,627

Table 38: Average Salary for Continuing Full-Time Faculty by Academic Rank and College (Fall 2020)

College/School	Fall 2020				Overall Average (\$)
	Professor (\$)	Associate Professor (\$)	Assistant Professor (\$)	Instructor (\$)	
Community College	NA	84,396	71,926	61,153	72,492
College of Agriculture, Urban Sustainability & Environmental Sciences	NA	86,091	73,512	NA	79,802
College of Arts and Sciences	105,263	85,192	72,624	68,990	83,017
School of Business & Public Administration	114,639	104,326	123,600	74,262	104,207
School of Engineering & Applied Sciences	112,686	99,556	86,796	64,714	90,938
David A. Clarke School of Law	154,279	127,427	102,709	64,178	112,148
Learning Resources	N/A	74,661	65,946	NA	70,304
University Total	121,717	94,521	85,302	66,659	87,558



SECTION 8

University Finances

8.1 Title III

Table 39: UDC Title III Allocations U.S. Department of Education

	5-years	5-years (aborted)	5-years	5 years	5 years	5 years	2-years	5-years	5-years	5-years	5-years	5-years	5-years	5-years
Title III Allocations to UDC	HBCU P031B990014	HBCU P031B040075	HBCU P031B070027	HBCU P031B120519	HBCU P031B170083	HBCU P031B220074	CCRAA P031B085027	HBGI P031B090202	HBGI P031B141020	HBGI P031K190022	SAFRA P031B100057	SAFRA P031B150040	FUTURE P031E200063	TOTAL
1999-2000	\$1,496,706													\$1,496,706
2000-01	\$1,569,366													\$1,569,366
2001-02	\$2,011,554													\$2,011,554
2002-03	\$2,033,758													\$2,033,758
2003-04	\$2,163,327													\$2,163,327
2004-05		\$2,352,191												\$2,352,191
2005-06		\$2,521,032												\$2,521,032
2006-07		\$2,600,772												\$2,600,772
2007-08			\$2,759,097											\$2,759,097
2008-09			\$3,307,418				\$1,104,684							\$4,412,102
2009-10			\$2,573,833				\$958,553	\$266,129						\$3,798,515
2010-11		\$938,897	\$2,904,771				\$644,948	\$753,629			\$944,458			\$6,186,703
2011-12			\$2,739,371					\$733,154			\$974,579			\$4,447,104
2012-13				\$2,415,669				\$342,522			\$927,789			\$3,685,980
2013-14				\$2,243,630				\$299,310			\$891,895			\$3,434,835
2014-15				\$2,869,410					\$161,462		\$992,171			\$4,023,043
2015-16				\$3,367,307					\$322,796			\$1,073,570		\$4,763,673
2016-17				\$3,437,183					\$1,007,682			\$1,045,179		\$5,490,044
2017-18					\$3,219,999				\$1,008,134			\$997,782		\$5,225,915
2018-19					\$3,443,261				\$1,320,694			\$963,358		\$5,727,313
2019-20					\$3,479,752					\$1,200,736		\$973,301		\$5,653,789
2020-21					\$4,104,163					\$1,439,742			\$992,475	\$6,536,380
2021-22					\$3,808,323					\$1,514,227			\$992,786	\$6,315,336
2022-23						\$3,930,229				\$1,539,923			\$919,513	\$6,389,665
Total	\$9,274,711	\$8,412,882	\$14,284,490	\$14,333,199	\$18,055,498	\$3,930,229	\$2,708,185	\$2,394,744	\$3,820,768	\$5,694,628	\$4,730,892	\$5,053,190	\$2,904,774	\$95,598,200

Note: red = carryover made available

8.2

Office of University Research

**Table 40: Total Awards Received by School/Department During Fiscal Year 2022
October 1, 2021 – September 30, 2022***

School/Department	FY22 Award Amount	School/Department	FY22 Award Amount
CAO	\$2,125,000	SEAS	\$1,652,242
CAS	\$838,141	Student Affairs	\$0
CAUSES	\$4,212,846	Title III	\$6,255,985
LAW School	\$0	UDC-CC	\$811,233
Office of the President	\$376,942	UDC-CC WDLL	\$183,066
SBPA	\$1,080,000	Grand Total	\$17,535,455

**Table 41: Awards Received by Funding Agency During Fiscal Year 2022
October 1, 2021 – September 30, 2022***

Funding Agency	FY22 Award Amount
Corporation for National and Community Service (CNCS)	\$405,940
DC Office of Aging	\$251,602
DC Department of Employment Services (DOES)	\$21,000
DC Department of Energy & Environment (DOEE)	\$445,000
DC Department of Health (DOH)	\$460,000
DC Housing Authority (DCHA)	\$131,000
DC Department of Human Services (DHS)	\$1,080,000
DC Public Schools (DCPS)	\$31,066
US Department of the Interior	\$125,000
US Dept. of Education	\$6,255,985
NSF	\$2,240,383
OSSE	\$1,061,230
Private Grants	\$492,077
USDA	\$2,410,172
Workforce Investment Council (WIC)	\$2,125,000
Grand Total	\$17,535,455

* Includes U.S. Department of Education Title III funds. Does not include awards from the U.S. Department of Education Title IV, Title VIII, or HEERF funds. Does not include carry-over amounts from previous year(s) awards.

Office of University Research (continued)

**Table 42: Proposals Submitted by School/Unit During Fiscal Year 2022
October 1, 2021-September 30, 2022**

School/Department	FY22 Proposals Submitted	School/Department	FY22 Proposals Submitted
CAO	\$10,002,272	SEAS	\$17,176,213
CAS	\$5,045,653	Student Affairs	\$0
CAUSES	\$3,967,541	Title III	\$6,255,985
LAW School	\$0	UDC-CC	\$8,462,526
Office of the President	\$114,000	UDC-CC WDLL	\$131,000
SBPA	\$80,000	Grand Total	\$51,235,190

**Table 43: Proposals Submitted by Funding Agency (source) During Fiscal Year 2022
October 1, 2021-September 30, 2022****

Funding Agency	FY22 Proposals Submitted
Corporation for National and Community Service (CNCS)	\$392,438
DC Department of Aging & Community Living (DACL)	\$201,602
DC Housing Authority (DCHA)	\$131,000
DC Human Services (DHS)	\$80,000
US Environmental Protection Agency (EPA)	\$1,947,761
US Department of Education	\$6,255,985
US Department of Energy	\$6,153,229
US Department of the Interior	\$12,000
Library of Congress	\$59,961
NASA	\$2,000,000
NIH	\$4,340,903
NSF	\$16,874,993
OSSE	\$8,640,139
Private Grants	\$94,406
USDA	\$1,925,773
Workforce Investment Council (WIC)	\$2,125,000
Grand Total	\$51,235,190

* Includes agency funds from a prime entity via a sub-award to UDC

8.3 Financial Aid

Table 44:

Academic Year	2019-20	2020-21	2021-22
Number of FAFSAs Received	8,345	7,219	7,074
Pell Eligible Number	5,896	4,968	4,372
Pell Eligible Percent of all FAFSAs received	71%	69%	62%

Table 45:

Total Financial Aid	2019-20	2020-21	2021-22
Total Financial Aid Awarded	\$52,538,809	\$41,792,974	\$39,605,244
Total Scholarships awarded from all sources (i.e. Federal, External and Institutional)	\$7,220,382	\$6,027,568	\$7,656,810
Institutional Scholarships (Scholarships awarded by UDC. Subset of Total Scholarships above.)	\$6,207,058	\$5,055,542	\$5,496,699
Grants	\$11,484,239	\$8,808,856	\$12,564,025
Pell Grants (subset of Grants)	\$7,546,938	\$6,124,282	\$5,229,980
Loans	\$19,545,890	\$15,337,776	\$8,242,187
Private Loans (subset of Loans)	\$534,302	\$438,950	\$415,543

Financial Aid (continued)

Table 46: Fund Breakdown

Scholarship Aid	2019-20	2020-21	2021-22
Average Scholarship Aid Awarded	\$7,917	\$7,593	\$4,121
Number - All students registered in AY receiving scholarship aid	913	840	1,858
Institutional Scholarship Aid	2019-20	2020-21	2021-22
Average Institutional Scholarship Aid Awarded	\$8,526	\$8,964	\$3,989
Number - All students registered in AY receiving institutional scholarship aid	728	564	1,378
Grant Aid	2019-20	2020-21	2021-22
Average Grant Aid Awarded	\$2,673	\$2,224	\$3,739
Number - All students registered in AY receiving grant aid	1,473	1,207	3,360
Pell Grants	2019-20	2020-21	2021-22
Average Pell Grant Awarded	\$3,453	\$4,019	\$4,061
Number - All students registered in AY receiving pell grant	1,909	1,524	1,288
Federal Loans	2019-20	2020-21	2021-22
Average Federal Loans Awarded	\$4,270	\$4,145	\$8,649
Number - All students registered in AY receiving federal loans	1,714	1,624	953







University of the District of Columbia

4200 Connecticut Avenue NW
Washington, DC 20008

udc.edu/irap