

UNIVERSITY OF THE
DISTRICT OF COLUMBIA
COMMUNITY COLLEGE

AVIATION PROGRAM
OPEN HOUSE

2801 Thomas Avenue, Hangar #2
Ronald Reagan Washington National Airport
(Directions on back of flyer)

Two times available for your convenience:

Wednesday, April 12th

6:00pm – 8:00pm

and

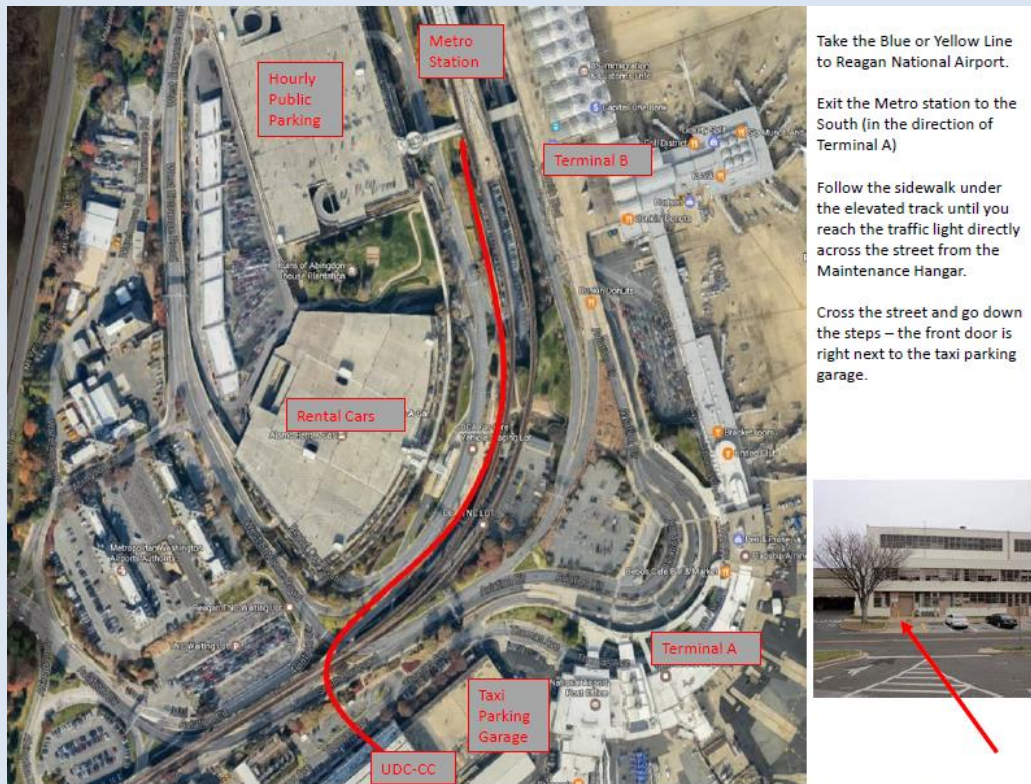
Saturday, April 15th

10:00am – 2:00pm

- Come and explore all that the UDC-CC Aviation Program has to offer!
- Tour our facility at Ronald Reagan Washington National Airport Hangar #2.
- Faculty will be available to answer questions about degree and certification programs.
- For more information, call 202-274-6205, or e-mail william.russo@udc.edu



<https://www.facebook.com/UofDCAviationProgram/>



Take the Blue or Yellow Line to Reagan National Airport.

Exit the Metro station to the South (in the direction of Terminal A)

Follow the sidewalk under the elevated track until you reach the traffic light directly across the street from the Maintenance Hangar.

Cross the street and go down the steps – the front door is right next to the taxi parking garage.



Driving directions from DC:

- Travel South on 395, and cross the 14 Street Bridge into Virginia.
- Take exit 10B (2nd right after crossing the bridge) George Washington Memorial Parkway South – the sign says Reagan Nat'l Airport and Mount Vernon. Even if you are in the right lane when you cross the bridge, you'll still have to cross over a few lanes on the right in order to get into the exit lane, so be prepared for that.
- Merge onto the GW Parkway and stay in the right lane.
- Take the first airport exit, and follow the signs to Terminal A hourly parking.
- Exit the parking garage in the direction of the Metro station, and follow the walking directions (listed above).

Driving Directions from Virginia:

Richmond and Points South:

- Travel North on I-95 North to I-395 North.
- Take exit 10 (George Washington Memorial Parkway South); stay in the right lane.
- Take the first airport exit, and follow the signs to Terminal A hourly parking.
- Exit the parking garage in the direction of the Metro station, and follow the walking directions (listed above).

Manassas and Points West:

- Travel East on I-66 East, and take Route 110 South to Route 1 South.
- Take the Airport Exit and follow the signs to Terminal A hourly parking.
- Exit the parking garage in the direction of the Metro station, and follow the walking directions (listed above).

Driving Directions from Maryland:

Baltimore and Prince George's County:

- Travel South on I-95 over the Woodrow Wilson Bridge into Virginia.
- Take exit 177B and merge onto Route 1 North.
- Take the Airport Exit and follow the signs to Terminal A hourly parking.
- Exit the parking garage in the direction of the Metro station, and follow the walking directions (listed above).

Frederick & Montgomery Counties:

- Travel south on I-270 towards Washington, DC
- Follow I-495 South (outer loop) towards Northern Virginia.
- Take exit 43 George Washington Memorial Parkway South.
- Take the Airport Exit and follow the signs to Terminal A hourly parking.
- Exit the parking garage in the direction of the Metro station, and follow the walking directions (listed above).