





Equipment Specifications

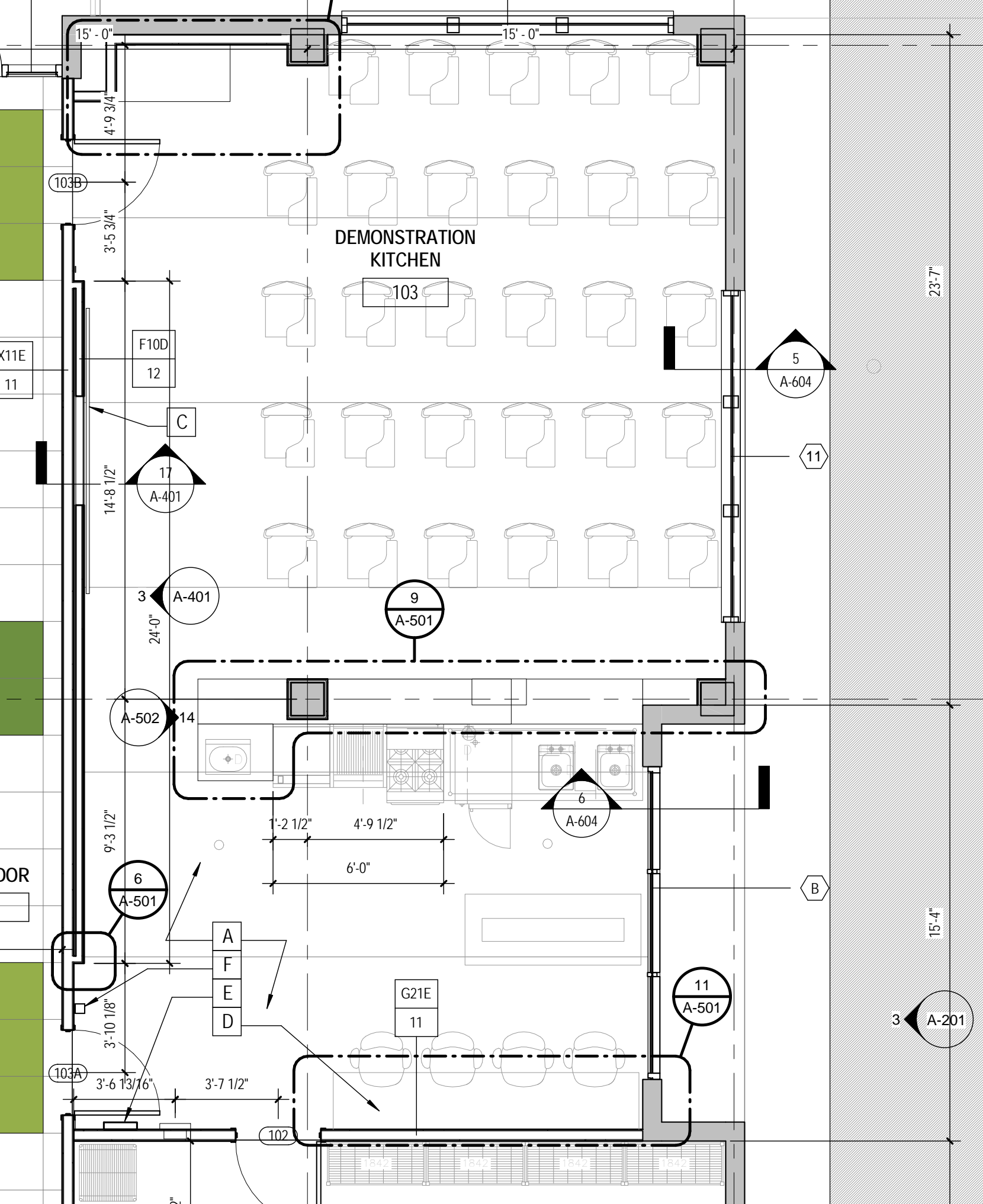
Demonstration Kitchen

Item #	Qty.	Description
1	1 ea	COUNTERTOP GRIDDLE W/ EQUIPMENT STAND
		Heavy Duty Griddle, gas, countertop, 24", (2) stainless steel burners, standby pilots, independent manual controls, stainless steel structure, Stainless Steel equipment stand w/ S.S. Legs to be 1-5/8" O.D w/ adjustable bullet feet, 90,000 BTU, cETLus, ETL
	1 ea	1 year warranty
	1 ea	Natural gas
	1 ea	With w/ gas hose, regulators and Casters
2	1 ea	CHARBROILER W/ EQUIPMENT STAND
		Heavy Duty Radiant Charbroiler, gas, countertop, 24", (2) stainless steel burners, standby pilots, stainless steel radiant plates, cast iron grill, independent manual controls, adjustable multi-level top grates, stainless steel structure, Stainless Steel equipment stand w/ S.S. Legs to be 1-5/8" O.D w/ adjustable bullet feet, 70,000 BTU, cETLus, ETL
	1 ea	1 year warranty
	1 ea	Natural gas
	1 ea	With w/ gas hose, regulators and Casters
3	1 ea	RANGE, 24", 4 OPEN BURNERS
		Restaurant T Series Range, gas, 24", (4) 35,000 BTU open burners, cast iron grates, manual control, standard oven, (2) racks, stainless steel front, sides, ledge & backguard with shelf, 6" chrome plated legs, 170,000 BTU, cETLus, ETL, CE
	1 ea	Standard warranty: 1 year parts and labor
	1 ea	Natural Gas (specify elevation if over 2,000 ft.)
	1 ea	With Casters (2) with Brakes, regulators and Gas Hose.
4	1 ea	BOILERLESS CONVECTION STEAMER
		EZ Steam Convection Steamer, electric, countertop, boilerless, (1) compartment, (3) 12 x 20 pan capacity, manual fill & drain operation, electromechanical controls, stainless steel interior & exterior, 4" adjustable legs, 9.0 kW, CSF, NSF
		Standard (1) year limited parts and (1) year labor warranty (reference warranty document for details)
	1 ea	Voltage 208 1 phase
	1 ea	With Filter

Demonstration Kitchen

Item #	Qty.	Description
5	1 ea	<p>2- COMPARTMENT SINK 82x30</p> <p>Custom 2- compartment sink. Size: 82" long by 30" deep Sink bowls to be heavy gauge type 304 stainless steel, deep drawn, seamless with all corners coved. Top - including backsplash with closed back and drainboards in heavy gauge 430 stainless steel. Drainboards to be "V" crease for positive draining. 9-1/2" high backsplash,. Legs to be 1-5/8" O.D stainless steel with adjustable bullet feet.</p>
	1 ea	Complete with splash mount faucet. Sink Strainer, Tail Piece and Lever Waste. Sink bowls 20" x 16" x 13.5" deep.
	1 ea	Equipment stand or Shelf support for EZ Steam Convection Steamer
	1 ea	Cut out in sink top to accommodate Steamer vent
	1 ea	Shop drawing required See floor plan for configuration
6	1 ea	<p>EXHAUST HOOD FREE STANDING W/FIRE SYSTEM</p> <p>Exhaust hood - Free Standing 430 s/s, complete with stainless steel filters 20" x 16", canopy lights, exhaust riser, closure panels to fit 9'0" ceiling height with matching s/s. Size: 100" long x 60" deep. Electrical Package installed in utility cabinet at Factory. Fire Suppression System provided w/pre-pipe @ Factory w/Detection. Fans by mechanical contractor</p>
7	1 ea	<p>DEMO TABLE, MOBILE</p> <p>Demo Table, 36" wide stainless steel top, without splash, 60" long, with adjustable undershelf, stainless steel frame & shelf, with 24 x 48 tilting mirror, 16 gauge 304 series stainless steel legs, stainless steel bullet feet</p>
	1 ea	With Casters (2 w/ Break)
8	1 ea	<p>HAND SINK</p> <p>Space Saver Hand Sink, wall mount, 9" wide x 9" front-to-back bowl, side splashes on left & right, 4" O.C. deck mount faucet holes with BKD-3G-G faucet, 1-7/8" drain opening, basket drain & mounting bracket included, NSF.</p>
	1 ea	With faucet, eyewash, Strainer and Tail Piece





DEMONSTRATION KITCHEN

103

9
A-501

3
A-401

17
A-401

5
A-604

11

14
A-502

6
A-604

6
A-501

A
F
E
D

11
A-501

3
A-201

103B

F10D
12

C

K11E

11

DOOR

103A

102

1842

1842

1842

1842

23'-7"

15'-4"